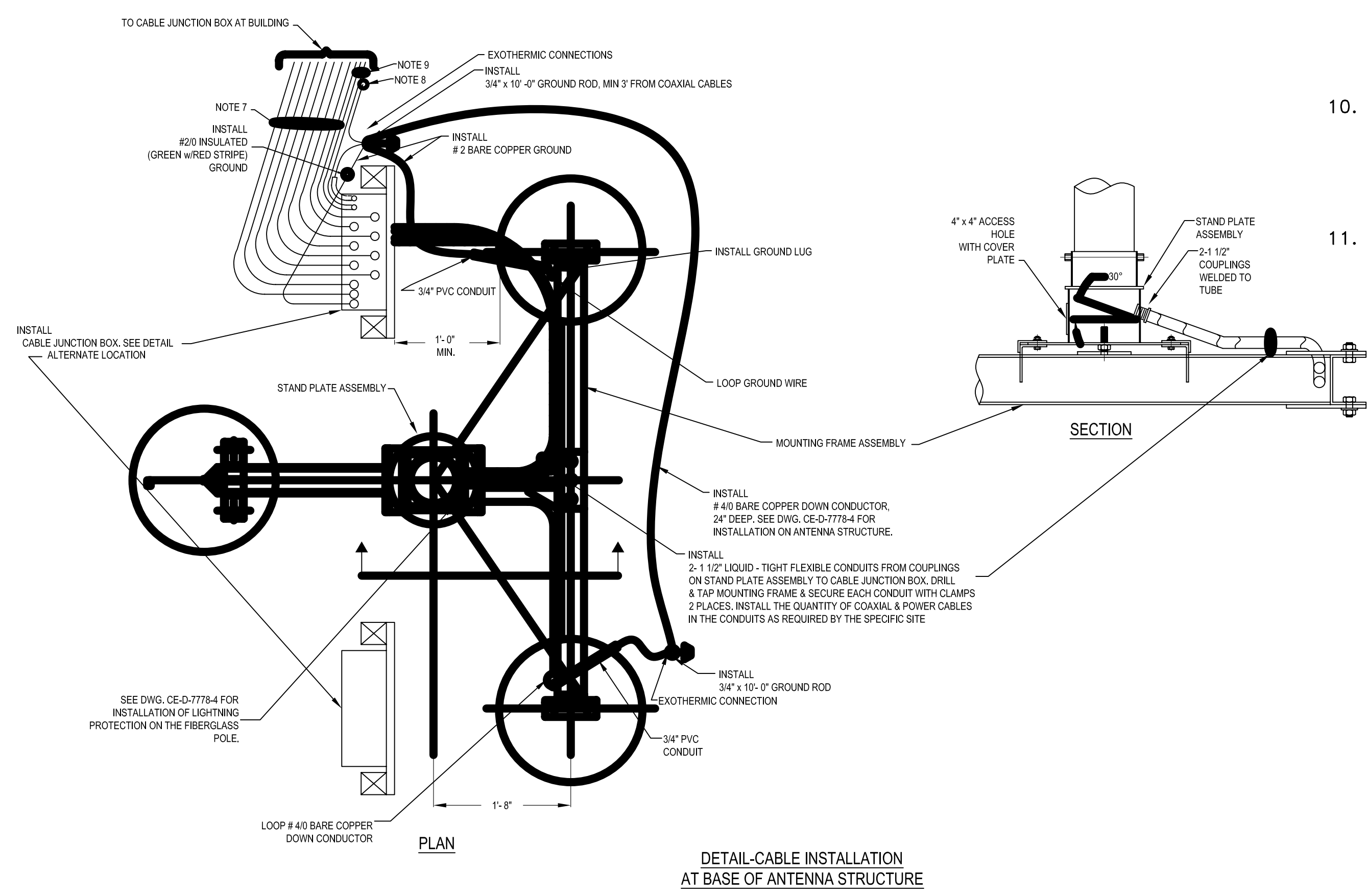
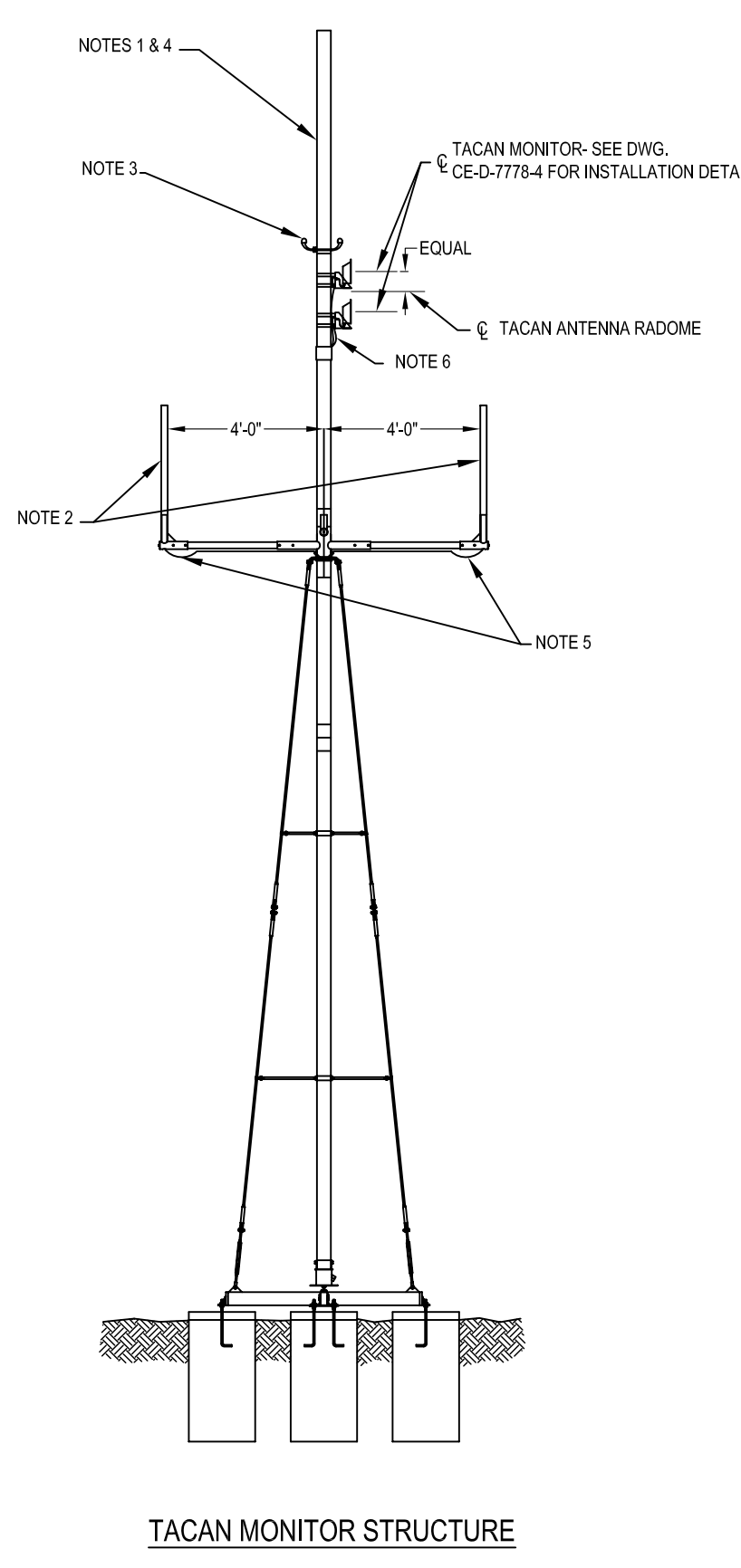
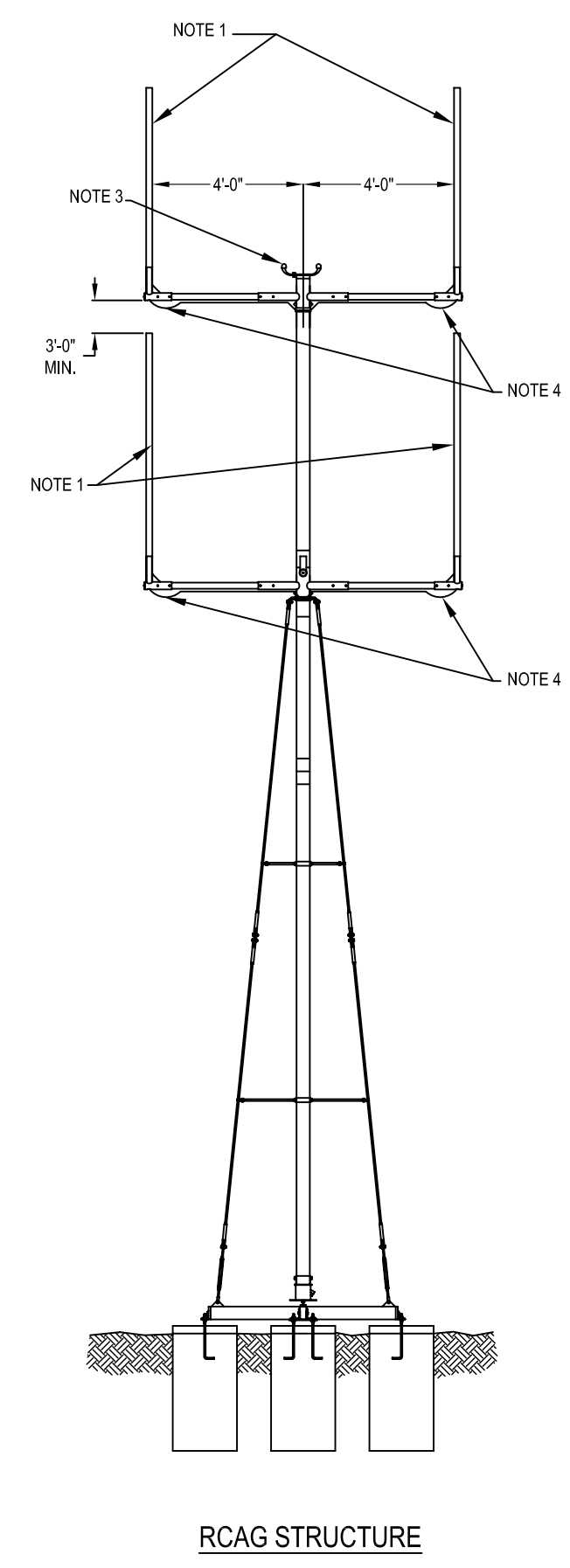


- NOTES:**
- STANDARD, STACKED OR HIGH GAIN ANTENNAS PER SITE REQUIREMENTS, ANTENNA INSTALLATIONS BY OTHERS.
 - STANDARD ANTENNAS PER SITE REQUIREMENTS. ANTENNA INSTALLATION BY OTHERS.
- FURNISH & INSTALL
- OBSTRUCTION LIGHT & 3/C #14 TYPE STO POWER CABLE WHEN SPECIFIED IN SITE REQUIREMENTS.
- INSTALL
- 2- RG214 COAXIAL CABLES TO EACH ANTENNA LOCATION REGARDLESS OF THE ANTENNA TYPE REQUIRED.
- INSTALL
- 1- RG214 COAXIAL CABLE FOR EACH ANTENNA LOCATION EXCEPT WHERE 2- RG214 CABLES ARE SPECIFIED IN THE SITE REQUIREMENTS.
- INSTALL
- 1- RG214 COAXIAL CABLE & FURNISH & INSTALL 1-3/C #14 TYPE STO POWER CABLE TO EACH TACAN MONITOR (4 CABLES).
- INSTALL
- RG333 COAXIAL CABLES IN 36" DEEP TRENCH FROM CABLE JUNCTION BOX AT ANTENNA STRUCTURE TO CABLE JUNCTION BOX AT BUILDING. NUMBER OF CABLES PER SITE REQUIREMENTS.
- INSTALL
- #4/0 BARE COPPER GROUND, 24" DEEP, IN SAME TRENCH WITH COAXIAL CABLES FROM GROUND ROD AT ANTENNA STRUCTURE TO EXISTING #4/0 GROUND LOOP. LOCATE IN CENTER OF TRENCH.
- INSTALL
- RIGID STEEL CONDUIT WITH 3/C #14 TYPE STO POWER CABLES IN 36" DEEP TRENCH WITH COAXIAL CABLES. NUMBER OF CABLES PER SITE REQUIREMENTS. USE 3/4" FOR 1 CABLE, 1 1/4" FOR 2 CABLES & 1 1/2" FOR 3 CABLES. OMIT CONDUIT WHEN SITE REQUIREMENTS DO NOT SPECIFY POWER CABLE.
- INSTALL
- #2 BARE COPPER GROUND & #2/0 INSULATED (GREEN WITH RED STRIPE) GROUND, 24" DEEP, IN SAME TRENCH WITH COAXIAL CABLES FROM EXISTING #4/0 GROUND LOOP TO CABLE JUNCTION BOX AT BUILDING.
- INSTALL
- SQUARE DUCT & CONDUIT, FROM JUNCTION BOX TO EQUIPMENT LOCATION, WITH RG214 COAXIAL CABLES & 3/C #14 TYPE STO POWER CABLES PER SITE REQUIREMENTS. SEE DETAILS ON SHEET 2.

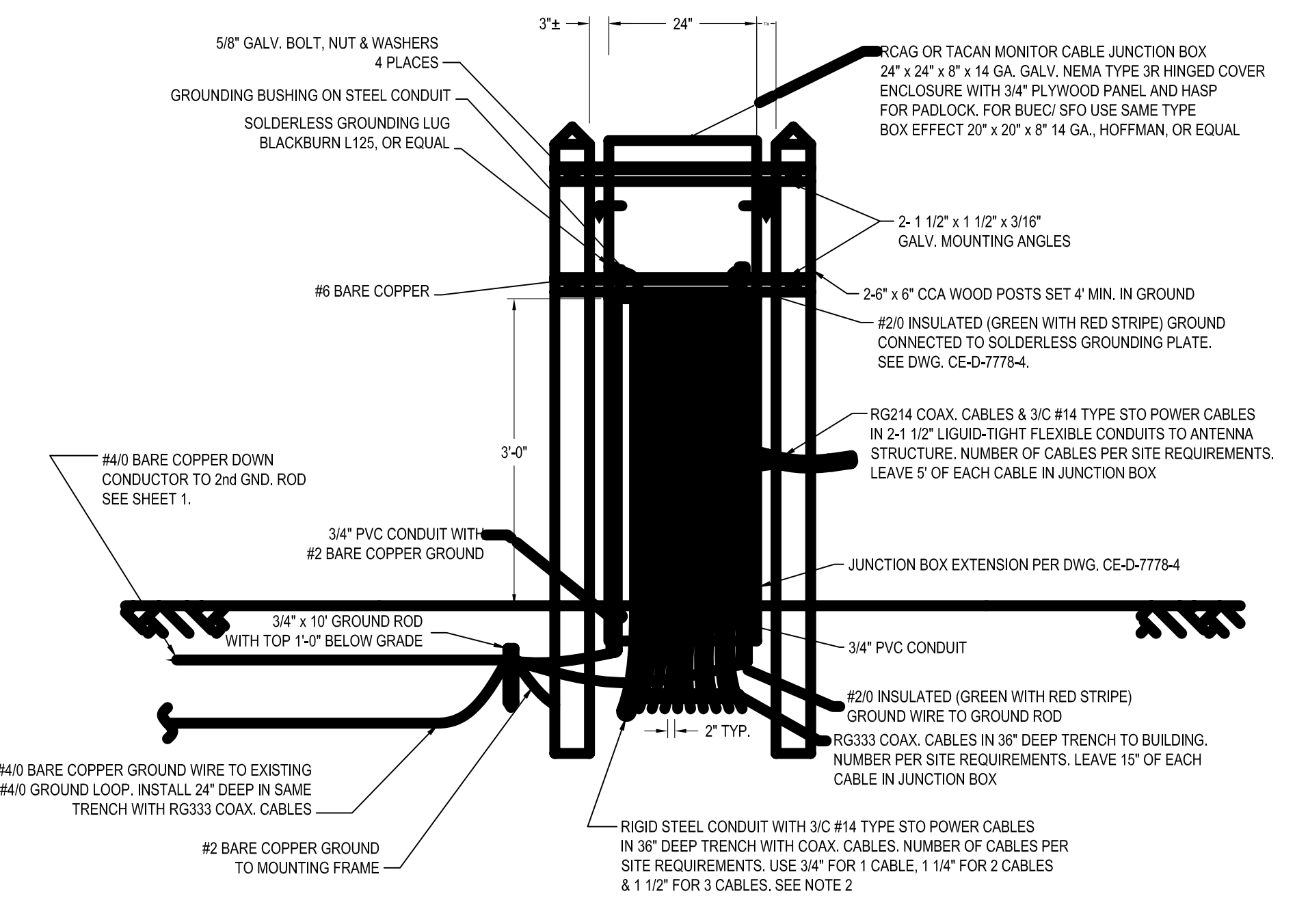
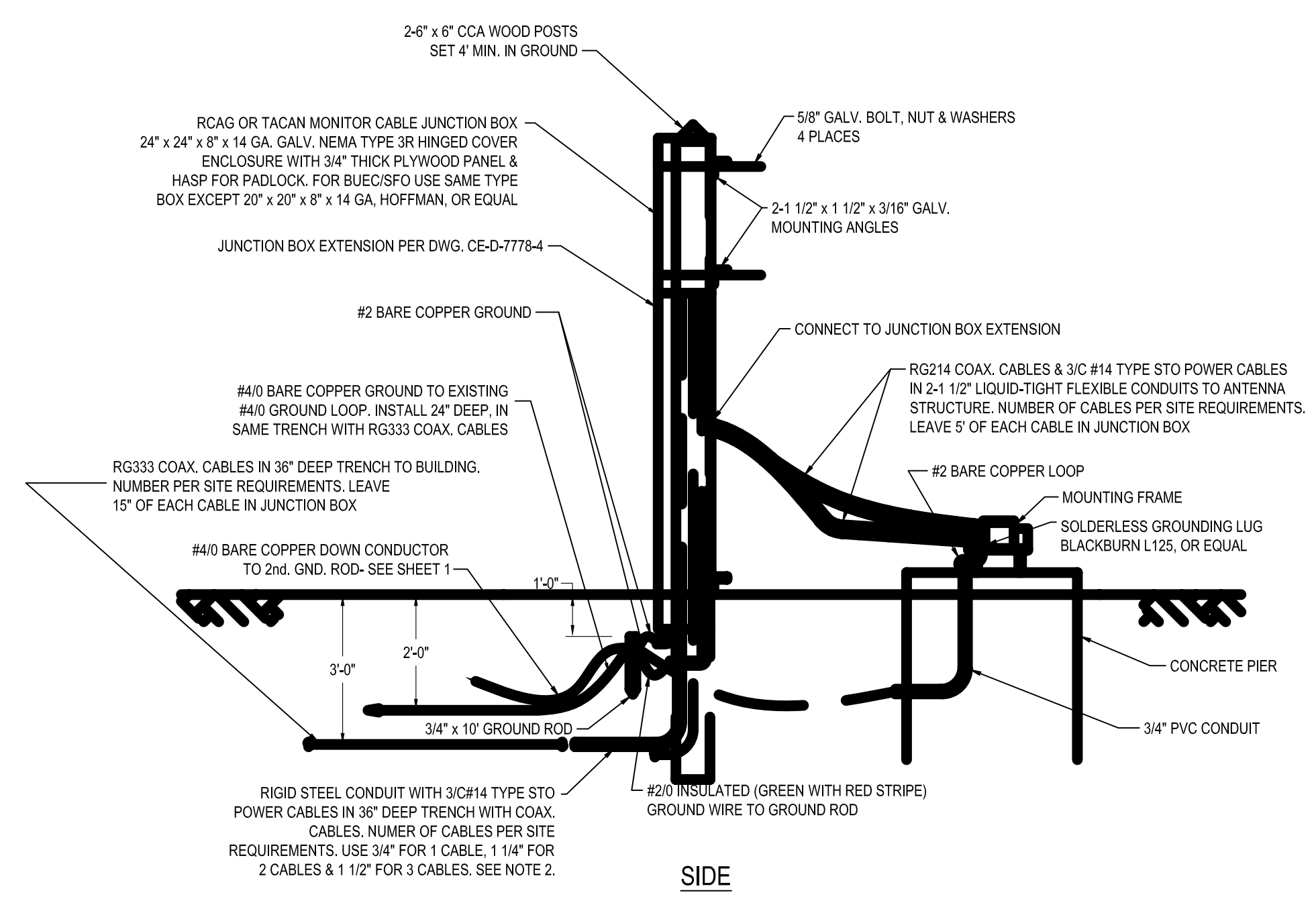


JACQUITH INDUSTRIES INC.

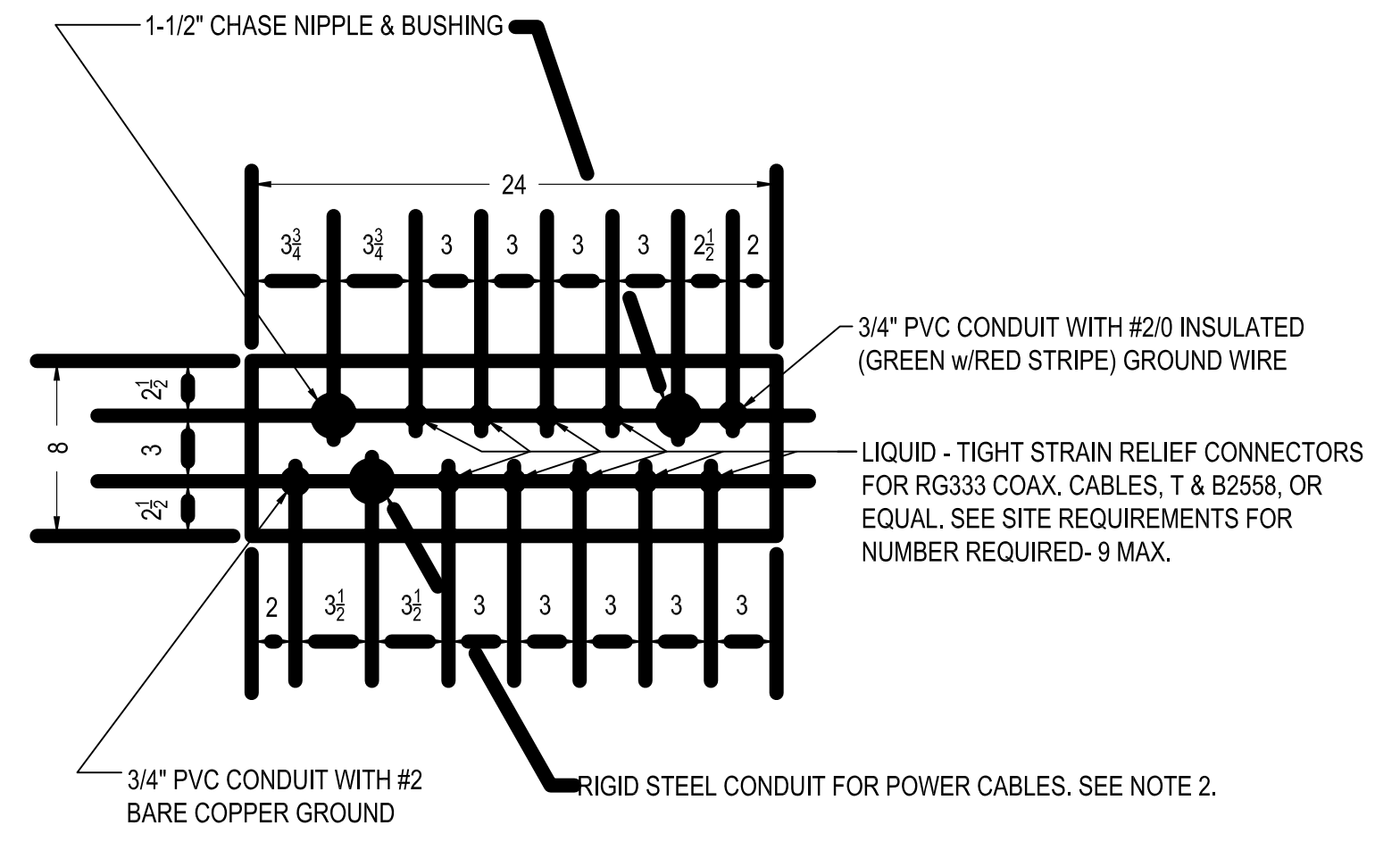
PO BOX 780
600 E. BRIGHTON AVE.
SYRACUSE, NEW YORK 13205
www.jaquith.com 315-478-5700

B	7/12/05	REDRAWN IN AUTOCAD FORMAT - DA		
A	5/10/89	MISC. CORRECTIONS		
REV./LTR.	DATE	DESCRIPTION	CHECKED	APPROVED

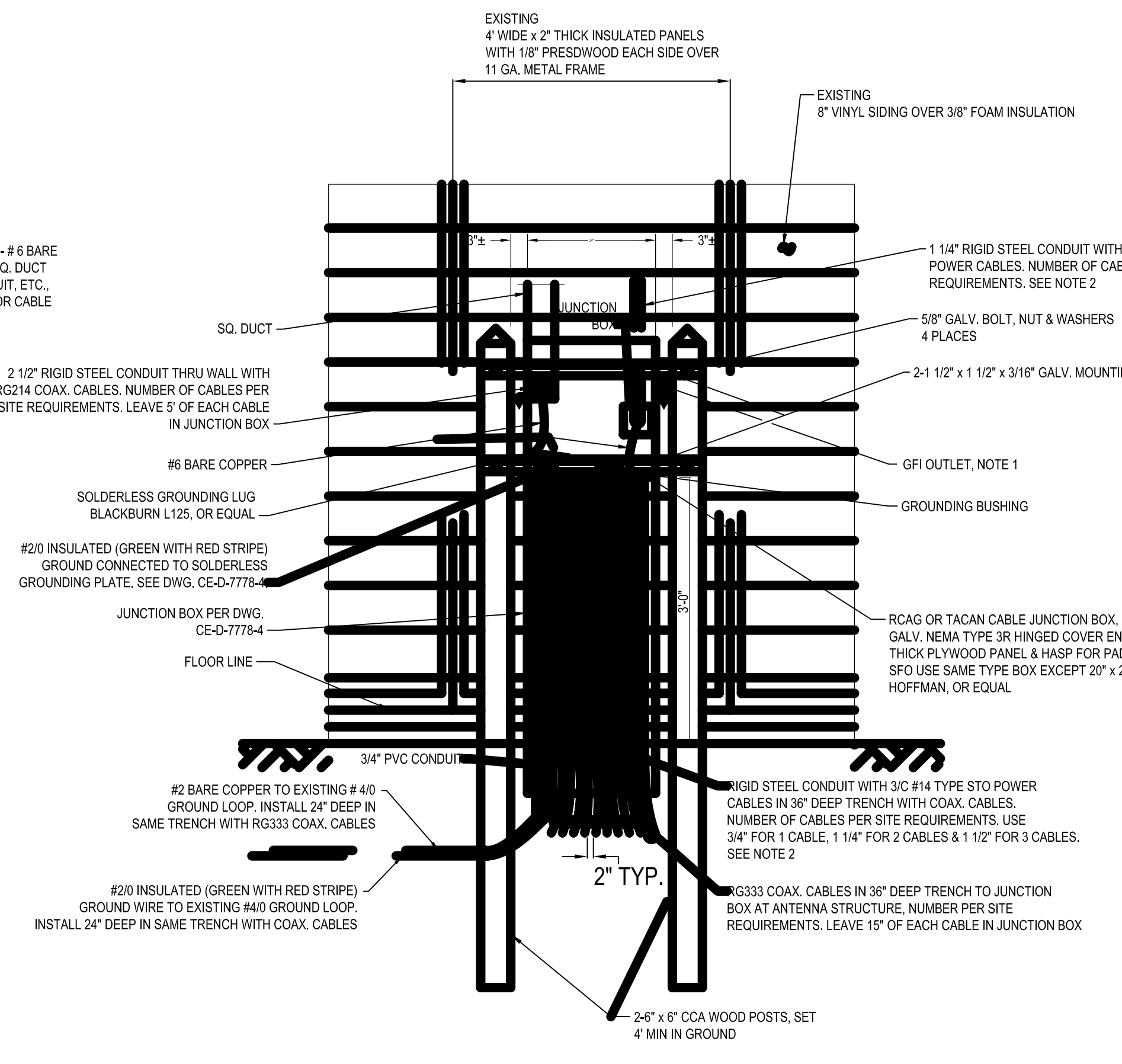
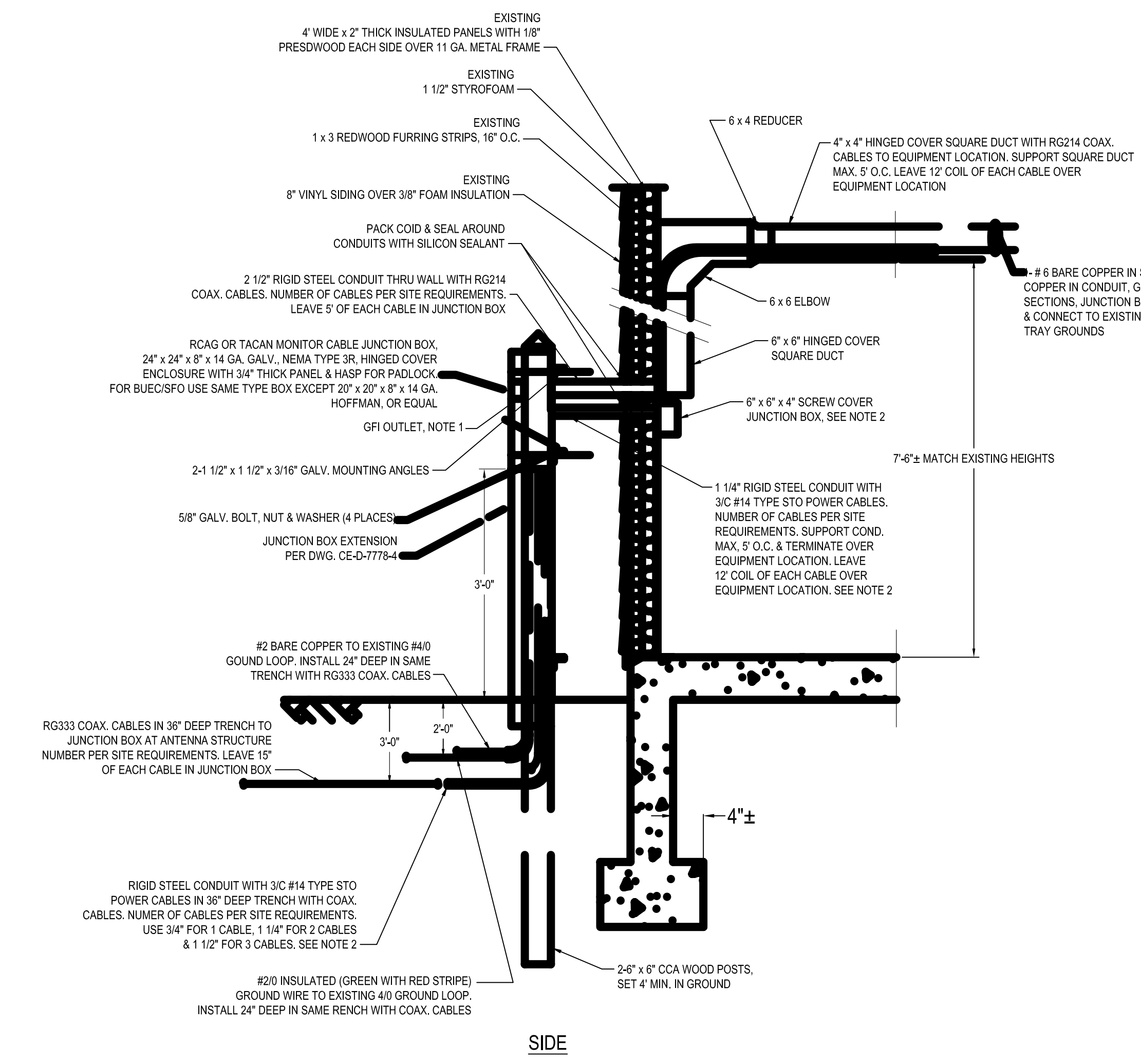
DEPARTMENT OF TRANSPORTATION FEDERAL AVIATION ADMINISTRATION CENTRAL REGION - KANSAS CITY, MISSOURI				
CABLE INSTALLATION DETAILS JACQUITH NL-40 FIBERGLASS ANTENNA STRUCTURES				
REVIEWED BY	SUBMITTED BY	APPROVED BY		
		TECHNICAL OFFICER		
DESIGNED BY	ISSUED BY	DATE- 8/10/88	REV. LTR.	
DRAWN BY	AIRWAY FACILITIES DIVISION	DRAWING NO.		
CHECKED BY	ENGINEERING BRANCH	CE-D-7778-2	C	



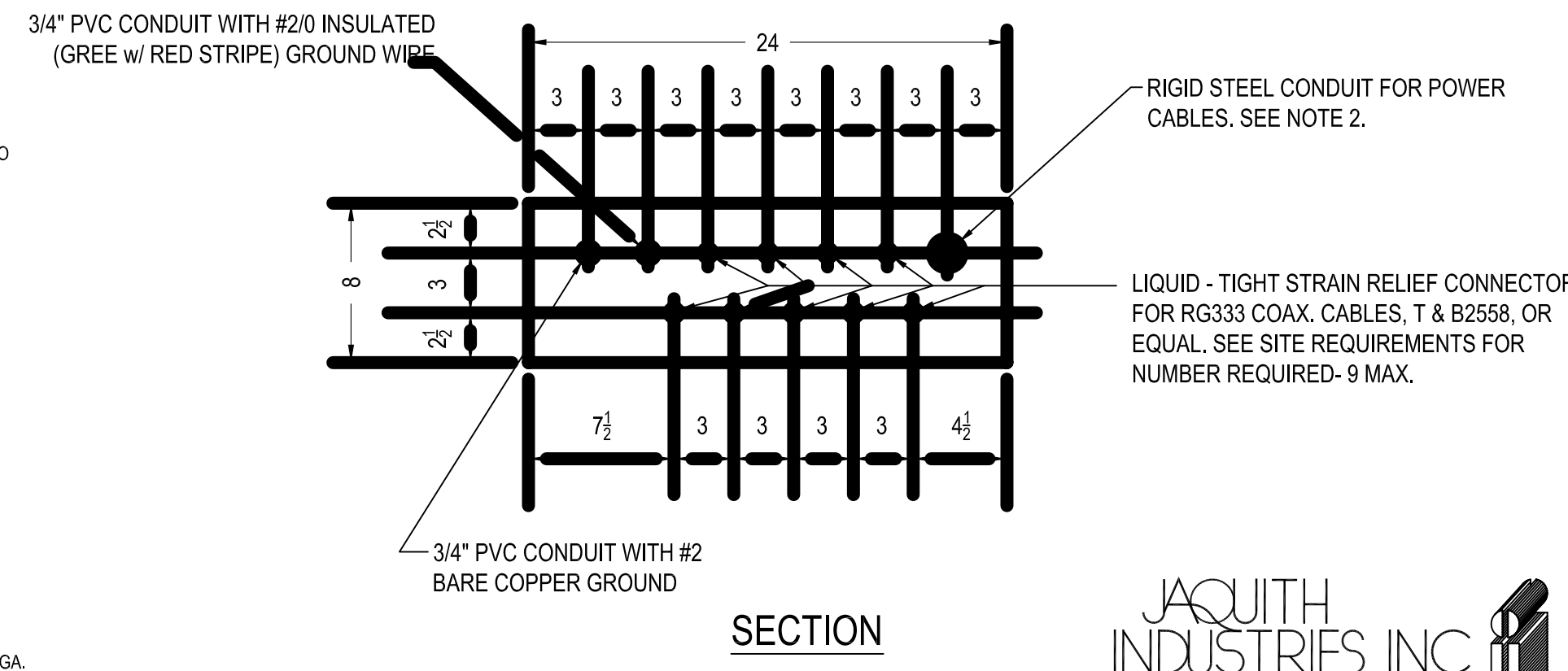
DETAIL-CABLE JUNCTION BOX AT BUILDING (RCAG-TACAN BOX SHOWN-BUEC/SFO BOX NOTED)



- NOTES:**
- A GROUND FAULT INTERRUPT DUPLEX OUTLET IN A WEATHERPROOF 2" x 4" OUTLET BOX SUPPORTED SECURELY ON THE NEW CABLE JUNCTION BOX. LOCATE THE OUTLET WHERE SHOWN WITH A 3/4" CLOSE NIPPLE FOR CONDUCTOR ROUTING. USE 2 EA. #12 THWN & 1 EA. #12 THWN GROUND WIRE TO CONNECT THE RECEPTACLE TO THE EXISTING PANELBOARD. USE A SPARE BREAKER IN THE PANELBOARD, OR IF NONE EXISTS, INSTALL A NEW 20 AMP. BREAKER IN THE PANELBOARD. ROUTE THE CONDUCTORS IN 3/4" EMT IN THE BUILDING & IN 3/4" GALV. RIGID STEEL CONDUIT THROUGH THE WALL & ON THE BUILDING EXTERIOR. RECEPTACLE SHALL BE HUBBELL GF5252, OR EQUAL, IN APPLETON #FDI-75, OR EQUAL, 2" x 4" UNILET. UNILET SHALL HAVE RED DOT #CCDV, OR EQUAL, WEATHERPROOF COVER. OPTIONAL INSTALLATION INSIDE THE JUNCTION BOX.
 - OMIT INSTALLATION OF CONDUITS & JUNCTION BOX WHEN THE SITE REQUIREMENTS DO NOT REQUIRE POWER CABLE.



DETAIL-CABLE JUNCTION BOX AT BUILDING (RCAG-TACAN BOX SHOWN-BUEC/SFO BOX NOTED)



JAQUITH INDUSTRIES INC.

PO BOX 780
600 E. BRIGHTON AVE.
SYRACUSE, NEW YORK 13205
www.jaquith.com 315-478-5700

B	7/12/05	REDRAWN IN AUTOCAD FORMAT - DA		
A	5/10/89	MISC. CORRECTIONS		
REV./LTR.	DATE	DESCRIPTION	CHECKED	APPROVED

DEPARTMENT OF TRANSPORTATION FEDERAL AVIATION ADMINISTRATION CENTRAL REGION - KANSAS CITY, MISSOURI				
CABLE INSTALLATION DETAILS JAQUITH NL-40 FIBERGLASS ANTENNA STRUCTURES				
REVIEWED BY	SUBMITTED BY	APPROVED BY		
		TECHNICAL OFFICER		
DESIGNED BY	ISSUED BY	DATE - 8/10/88	REV. LTR.	
DRAWN BY	AIRWAY FACILITIES DIVISION	DRAWING NO.		
CHECKED BY	ENGINEERING BRANCH	CE-D-7778-3	C	