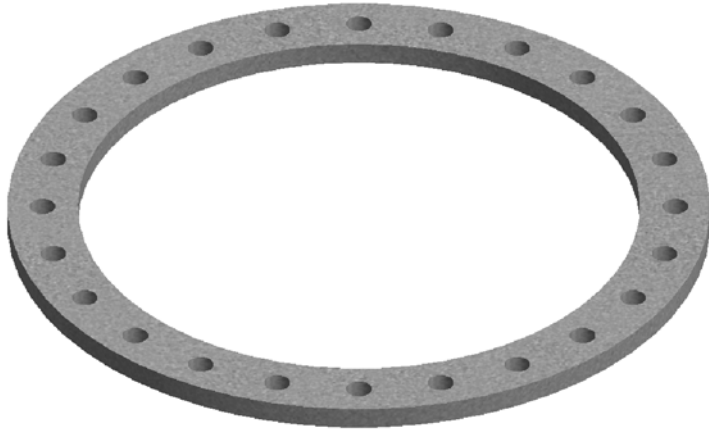
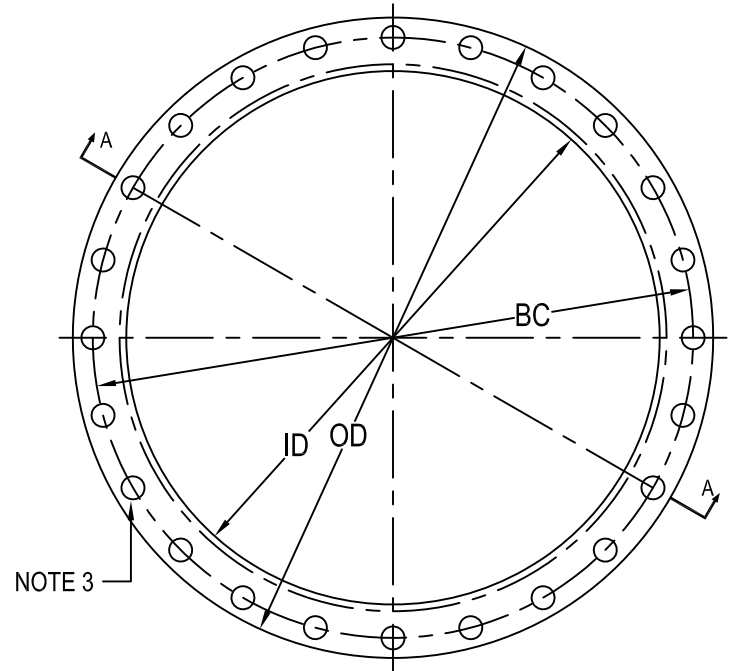


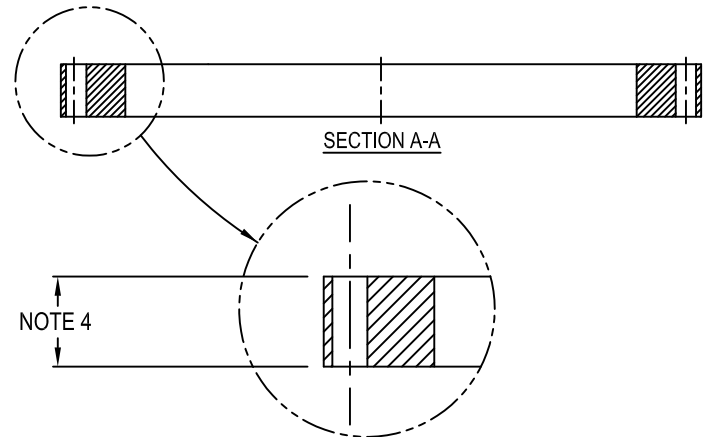
L-868 Class 1A Multi-Hole Spacer Ring



Size B Spacer Ring shown with multi-hole bolt circle



1. Approved and Certified to FAA Advisory Circular AC150/5345-42 (Current Revision) L868 class 1A
Size: B=12"
2. Spacer Rings made to Class 1A :
1/16" to 1/4" are zinc plated with O.D. wash
5/16" to 2 1/4" are galvanized to ASTM-A123/A123M-02
3. (24) 7/16" Ø equally spaced, thru holes
4. Specify ring thickness in 1/16" increments by filling in missing parameters in product number
eg. A spacer ring .25" thick = AR542104MH
1/16" min. to 2 1/4" max.
5. No hardware shipped with spacer ring



TYPE	OD	ID	BC
AR5421__MH	12"	10"	11.25"
12" L868B	[305]	[254]	[285.8]

[] = dimensions in metrics; mm.

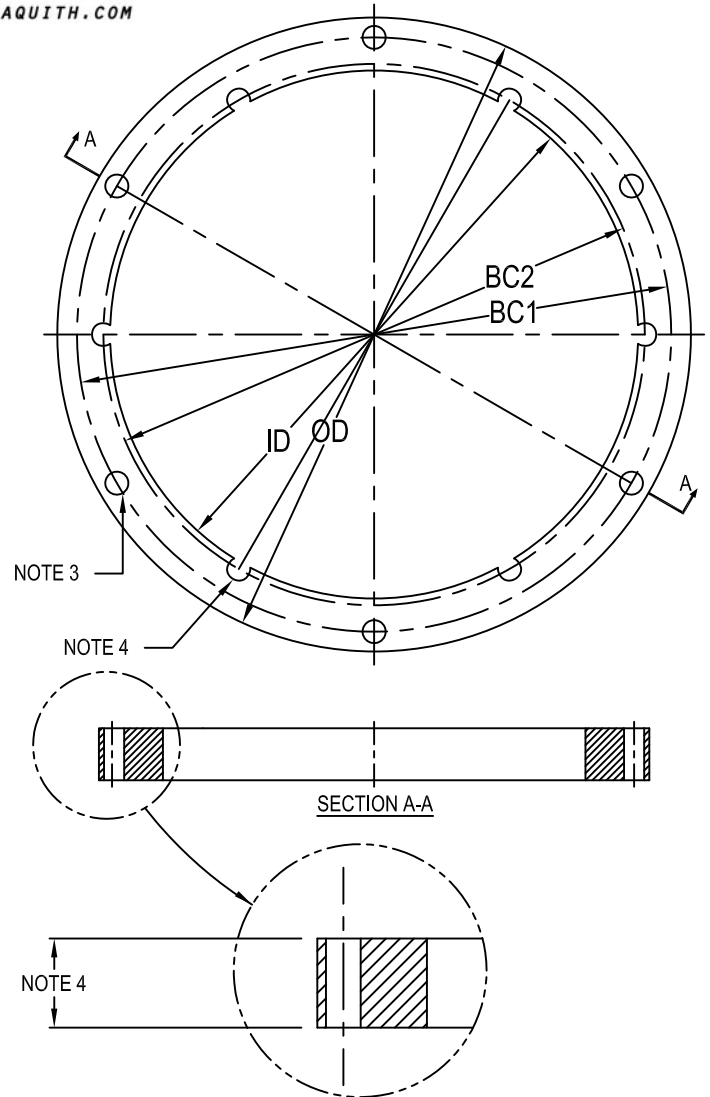


L-868 Class 1A Spacer Ring



Size B Spacer Ring shown with double bolt pattern

1. Approved and Certified to FAA Advisory Circular AC150/5345-42 (Current Revision) L868 class 1A
Size: A=8", B=12", C=15"
A=10" / AC150/5345-42
2. Spacer Rings made to Class 1A :
1/16" to 1/4" are zinc plated with O.D. wash
5/16" to 2" are galvanized to ASTM-A123/A123M-02
3. (6) 7/16" Ø equally spaced, thru holes
4. Available in 1/16" increments
1/16" min. to 2 3/16" max.
- * Size B, 1/16" through 1/4" thick come with double bolt patterns as shown.
5. Spacers above 1/4" thickness are shipped with:
(6) 3/8"-16 x (Ring Thickness + 1/8" minimum)
Stainless hex head cap screws
(6) 3/8", 2 piece locking washers
(JI Pt. No. 10680607)



TYPE	OD	ID	BC1	BC2
AR0821 _ _	8"	6.50	7.25"	—
8" L868A	[203.2]	[165.1]	[184.2]	—
AR5121 _ _	10"	8"	9.25"	—
10" L868A See Note 1	[254]	[203.2]	[235]	—
* AR5421 _ _	12"	10"	11.25"	10.25"
12" L868B	[305]	[254]	[285.8]	[260.4]
AR5521 _ _	15"	13"	14.25"	13.25"
15" L868C	[381]	[330.2]	[362]	[336.5]
AR5721 _ _	17.375"	13"	14.25"	—
15" L868C	[441.3]	[330.2]	[362]	—

[] = dimensions in metrics; mm.

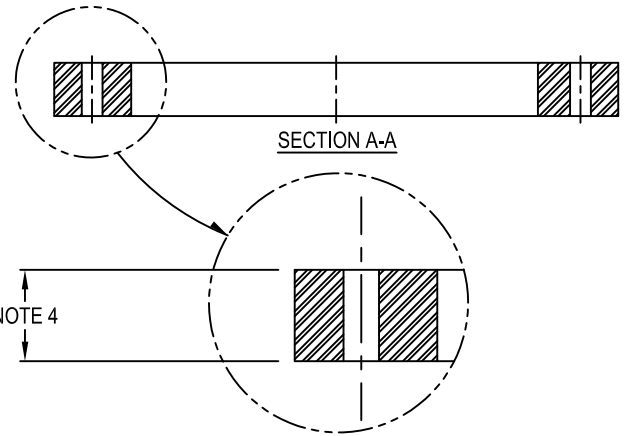
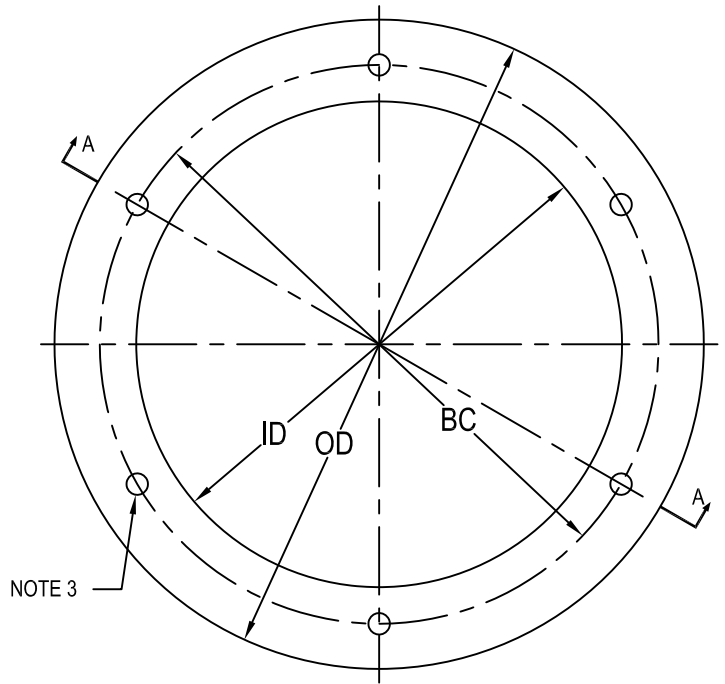
* SEE NOTE 4

E-01h (rev 0)

L-868 Class 1A Spacer Ring Bottom & Middle Sections



L-868 Size B Spacer Ring



1. Approved and Certified to FAA Advisory Circular AC150/5345-42 (Current Revision) L868 class 1A
Size: A=10" / AC150/5345-42, B=12", C=15"
2. Spacer Rings made to Class 1A :
1/16" to 1/4" are zinc plated with O.D. wash
5/16" to 2" are galvanized to ASTM-A123/A123M-02
3. (6) 7/16" \varnothing equally spaced, thru holes
4. Available in 1/16" increments
1/16" min. to 2 3/16" max.
5. Spacers above 1/4" thickness are shipped with:
(6) 3/8"-16 x (Ring Thickness + 1 1/8") Min.
Stainless hex head cap screws
(6) 3/8", 2 piece locking washers
(JI Pt. No. 10680607)

TYPE	OD	ID	BC
AR5411 __ 12" L868B	12.5"	9.25"	10.25"
	[317.5]	[235]	[260.4]
AR5511 __ 15" L868C	15.5"	12.375"	13.25"
	[393.7]	[314]	[336.6]

[] = dimensions in metrics; mm.

L-868 Class 1A Spacer Ring Bottom / Middle / Top Sections



Size B Spacer Ring shown with double bolt pattern

1. Approved and Certified to FAA Advisory Circular AC150/5345-42 (Current Revision) L868 class 1A
Size: B=12", C=15"

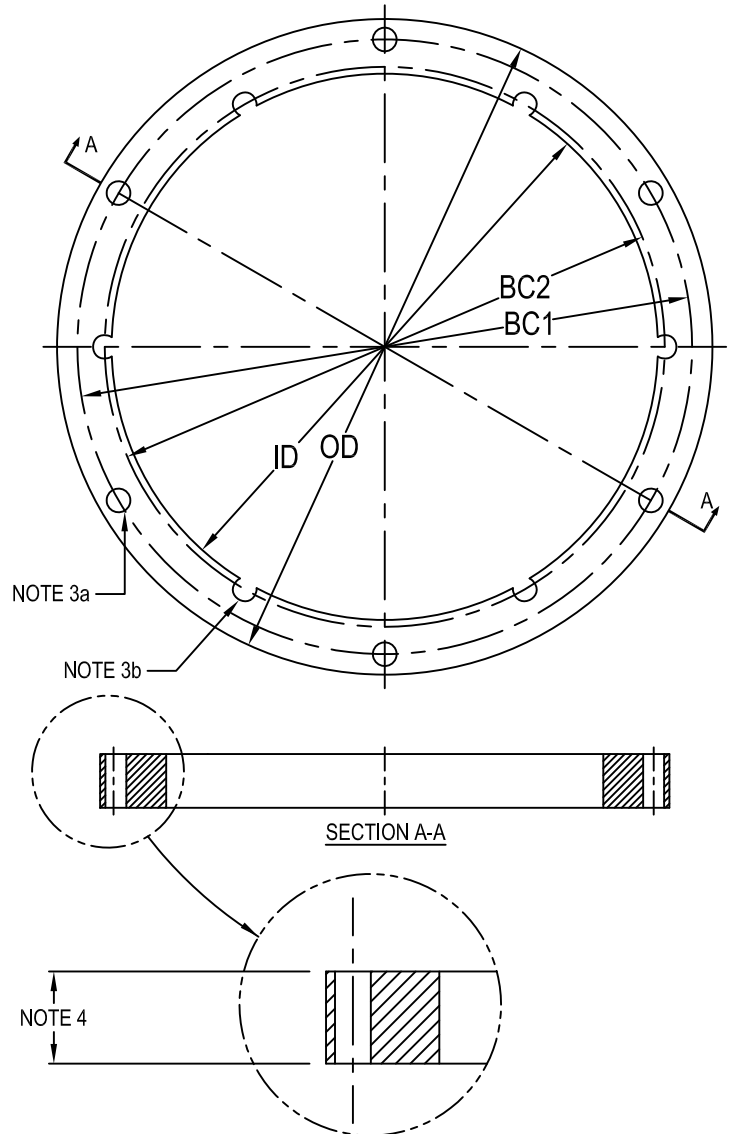
2. Spacer Rings made to Class 1A :
Galvanized to ASTM-A123/A123M-02

3a. (6) 7/16" Ø equally spaced, thru holes

3b. (6) 7/16" Ø equally spaced, partial holes

4. Available in 1/16" increments
5/16" min. to 2 3/16" max.

5. Spacers above 1/4" thickness are shipped with:
(6) 3/8"-16 x (Ring Thickness + 1 1/8") Min.
Stainless hex head cap screws
(6) 3/8", 2 piece locking washers
(JI Pt. No. 10680607)



TYPE	OD	ID	BC1	BC2
AR5422 __	12"	10"	11.25"	10.25"
12" L868B	[305]	[254]	[285.8]	[260.4]
AR5522 __	15"	13"	14.25"	13.25"
15" L868C	[381]	[330.2]	[362]	[336.5]

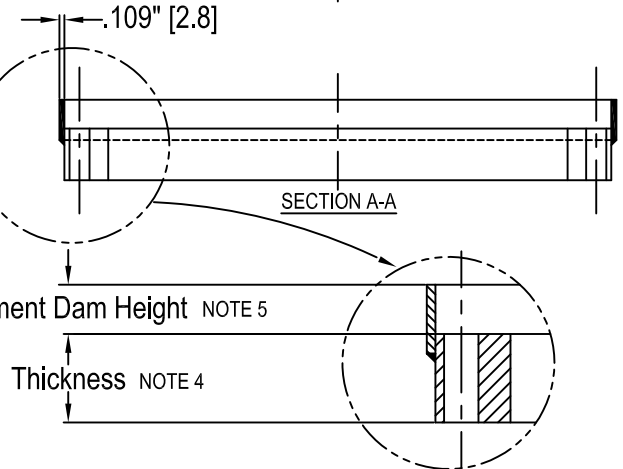
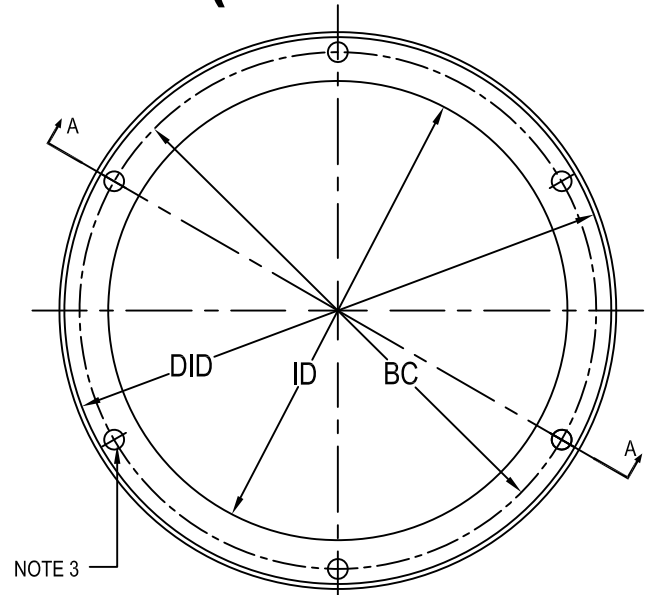
[] = dimensions in metrics; mm.

L-868 Class 1A Spacer Ring w/ Pavement Dam (Metric Version)



L-868 Class 1A Spacer Ring w/ Pavement Dam

- Approved and Certified to FAA Advisory Circular AC150/5345-42 (Current Revision) L868 class 1A
Size: A-8", B-12", C-15"
A=10" / AC150/5345-42
- Spacer Rings with Pavement Dam made to Class 1A :
Are galvanized to ASTM-A123/A123M-02
- (6) 7/16" Ø equally spaced, thru holes
- Available in .125" [3.2] & .250" [6.4] to .750" [19.1]
thickness in 1/16" increments
Example of 1/8" thickness Spacer Ring Class 1A
with Pavement Dam:
AR542102Y
- * 5/8" pavement dam height, standard.
** 1 1/8" pavement dam height standard.
(Not available on 02 thickness)
Special height pavement dams available
- Spacers above 1/4" thickness are shipped with:
 - (6) M10 x 1.5 x (Ring Thickness + 30mm Minimum)
SS hex head cap screws
 - (6) 2 piece locking washers
(JI Pt. No. 10680607)



TYPE	DID	ID	BC
AR0821__YM 8" L868A	8.25" [209.6]	6.5" [165.1]	7.25" [184.2]
AR5121__YM 10" L868A See Note 1	10.25" [260.4]	8" [203.2]	9.25" [235]
AR5421__YM 12" L868B	12.25" [311.2]	10" [254]	11.25" [285.8]
* AR5521__YM 15" L868C	15.25" [387.4]	13" [330.2]	14.25" [362]
** AR5721__YM 15" L868C	17.5" [444.5]	13" [330.2]	14.25" [362]

* SEE NOTE 5
** SEE NOTE 5

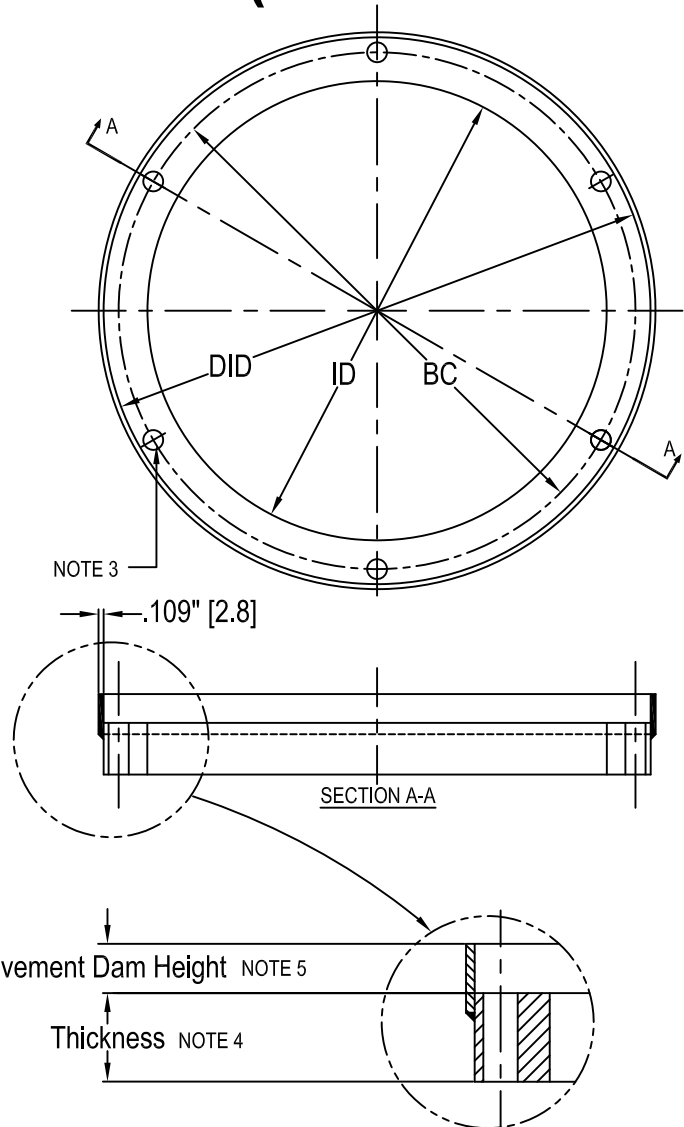
[] = dimensions in metrics; mm.

L-868 Class 1A Spacer Ring w/ Pavement Dam (Metric Version)



L-868 Class 1A Spacer Ring w/ Pavement Dam

1. Approved and Certified to FAA Advisory Circular AC150/5345-42 (Current Revision) L868 class 1A
Size: A-8", B-12", C-15"
2. Spacer Rings with Pavement Dam made to Class 1A :
Are galvanized to ASTM-A123/A123M-02
3. (6) 7/16" Ø equally spaced, thru holes
4. Available in .125" [3.2] & .250" [6.4] to .750" [19.1]
thickness in 1/16" increments
Example of 1/8" thickness Spacer Ring Class 1A
with Pavement Dam: AR542102Y
5. 5/8" pavement dam height, standard.
1 1/8" pavement dam height standard.
* (Not available on 02 thickness)
** Special height pavement dams available
6. Spacers above 1/4" thickness are shipped with:
(6) M10 x 1.5 x (Ring Thickness + 30mm Minimum)
Stainless hex head cap screws
(6) 2 piece locking washers
(JI Pt. No. 10680607)

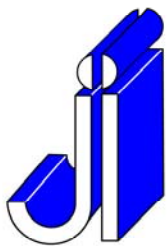


TYPE	DID	ID	BC
AR0821__YM 8" L868A	8.25"	6.5"	7.25"
	[209.6]	[165.1]	[184.2]
AR5421__YM 12" L868B	12.25"	10"	11.25"
	[311.2]	[254]	[285.8]
* AR5521__YM 15" L868C	15.25"	13"	14.25"
	[387.4]	[330.2]	[362]
** AR5721__YM 15" L868C	17.5"	13"	14.25"
	[444.5]	[330.2]	[362]

* SEE NOTE 5
** SEE NOTE 5

[] = dimensions in metrics; mm.

E-04.1h (rev 1)



L-868 Class 1A Spacer Ring w/ Pavement Dam



L-868 Class 1A Spacer Ring w/ Pavement Dam

1. Approved and Certified to FAA Advisory Circular AC150/5345-42 (Current Revision) L868 class 1A
Size: A-8", B-12", C-15"
A=10" / AC150/5345-42

2. Spacer Rings with Pavement Dam made to Class 1A :
Are galvanized to ASTM-A123/A123M-02

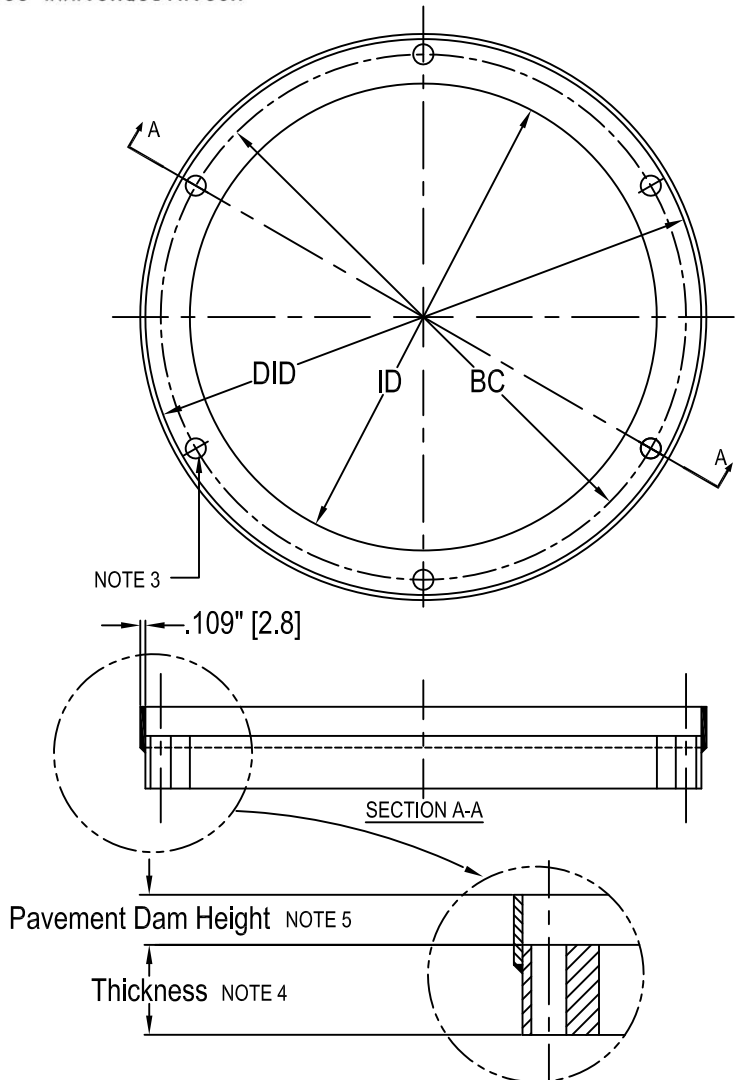
3. (6) 7/16" Ø equally spaced, thru holes

4. Available in .125" [3.2] & .250" [6.4] to .750" [19.1] thickness in 1/16" increments
Example of 1/8" thickness Spacer Ring Class 1A with Pavement Dam:

AR542102Y

5.* 5/8" pavement dam height, standard.
** 1 1/8" pavement dam height standard.
Special height pavement dams available

6. Spacers above 1/4" thickness are shipped with:
(6) 3/8"-16 x (Ring Thickness + 1/8" minimum)
Stainless hex head cap screws
(6) 3/8", 2 piece locking washers
(JI Pt. No. 10680607)



TYPE	DID	ID	BC
AR0821__Y 8" L868A	8.125" [206.4]	6.5" [165.1]	7.25" [184.2]
AR5121__Y 10" L868A See Note 1	10.125" [257.2]	8" [203.2]	9.25" [235]
AR5421__Y 12" L868B	12.125" [308]	10" [254]	11.25" [285.8]
* AR5521__Y 15" L868C	15.125" [384.2]	13" [330.2]	14.25" [362]
** AR5721__Y 15" L868C	17.5" [444.5]	13" [330.2]	14.25" [362]

* SEE NOTE 5
** SEE NOTE 5

[] = dimensions in metrics; mm.

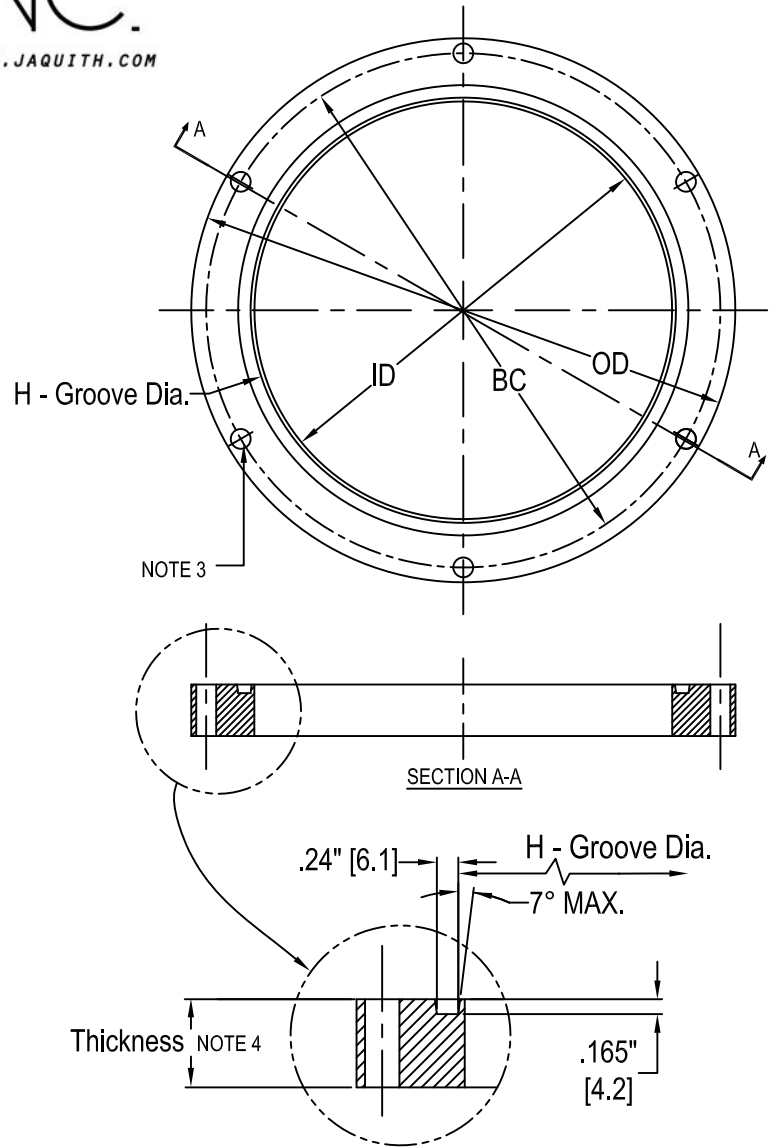
L-868 Class 1A Flange Ring



L-868 Class 1A Flange Ring

1. Approved and Certified to FAA Advisory Circular AC150/5345-42 (Current Revision) L868 class 1A
Size: B=12", C=15"
A=10" / AC150/5345-42
2. Flange Rings made to Class 1A:
are zinc plated with O.D. wash
3. (6) $\frac{7}{16}$ " \varnothing equally spaced, thru holes
4. Available from .250" to 2" thickness in
1/16" increments designated with the
last 2 digits in product number
(ex. 1/2" thick size B Flange Ring
is AF540208)

5. Flange rings are shipped with:
 - (6) 3/8"-16 x (Ring Thickness + 1 1/8") Min.
Stainless hex head cap screws
 - (6) 3/8", 2 piece locking washers (10680607)
 - (1) 'O' ring gasket
 - 10" - (10530791)
 - 12" - (10530021)
 - 15" - (10530274)



TYPE	OD	ID	BC	H
AF5102 __	10"	8"	9.25"	8.145"
10" L868A See Note 1	[254]	[203.2]	[235]	[206.9]
AF5402 __	12"	10"	11.25"	10.145"
12" L868B	[305]	[254]	[285.8]	[257.7]
AF5502 __	15"	13"	14.25"	13.145"
15" L868C	[381]	[330.2]	[362]	[333.9]

[] = dimensions in metrics; mm.

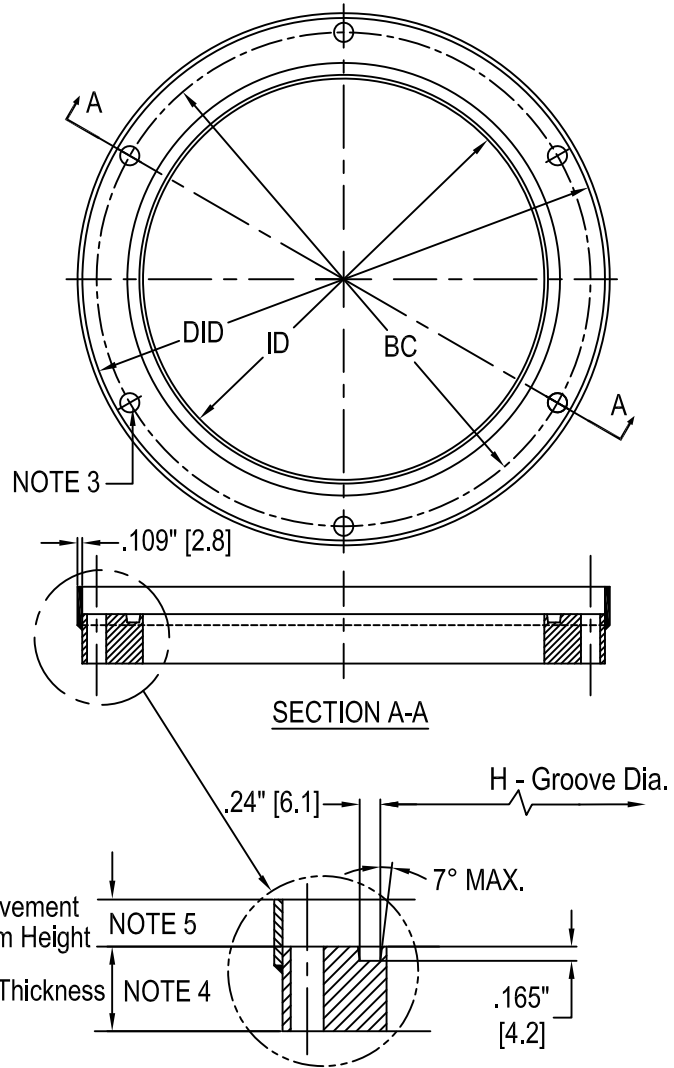
E-05h (rev 0)

L-868 Class 1A Flange Ring w/ Pavement Dam (Metric Version)



L-868 Class 1A Flange Ring w/ Pavement Dam

1. Approved and Certified to FAA Advisory Circular AC150/5345-42 (Current Revision) L868 class 1A
Size: B=12", C=15"
2. Flange Rings with Pavement Dam made to Class 1A:
are zinc plated with O.D. wash per the requirements of ASTM-B633, Type II, Class I
3. (6) 7/16" equally spaced, thru holes
4. Available from .250" to 2" thickness in 1/16" increments designated with the last 2 digits in product number
(ex. 1/2" thick size B Flange Ring is AF540208YM)
5. * 5/8" pavement dam height, standard.
** 1 1/8" pavement dam height standard.
Special height pavement dams available
6. Flange rings are shipped with:
 - (6) M10 x 1.5 x (Ring Thickness + 30mm Minimum) Stainless hex head cap screws
 - (6) 2 piece locking washers (JI Pt. No. 10680607)
 - (1) 'O' ring gasket
 - 12" - (10530021)
 - 15" - (10530274)



	TYPE	DID	ID	BC	H
*	AF5402__YM	12.25"	10"	11.25"	10.145"
	12" L868B	[311.2]	[254]	[285.8]	[257.7]
*	AF5502__YM	15.25"	13"	14.25"	13.145"
	15" L868C	[387.4]	[330.2]	[362]	[333.9]
**	AF5702__YM	17.375"	13"	14.25"	13.145"
	15" L868C	[441.3]	[330.2]	[362]	[333.9]

* SEE NOTE 5
** SEE NOTE 5

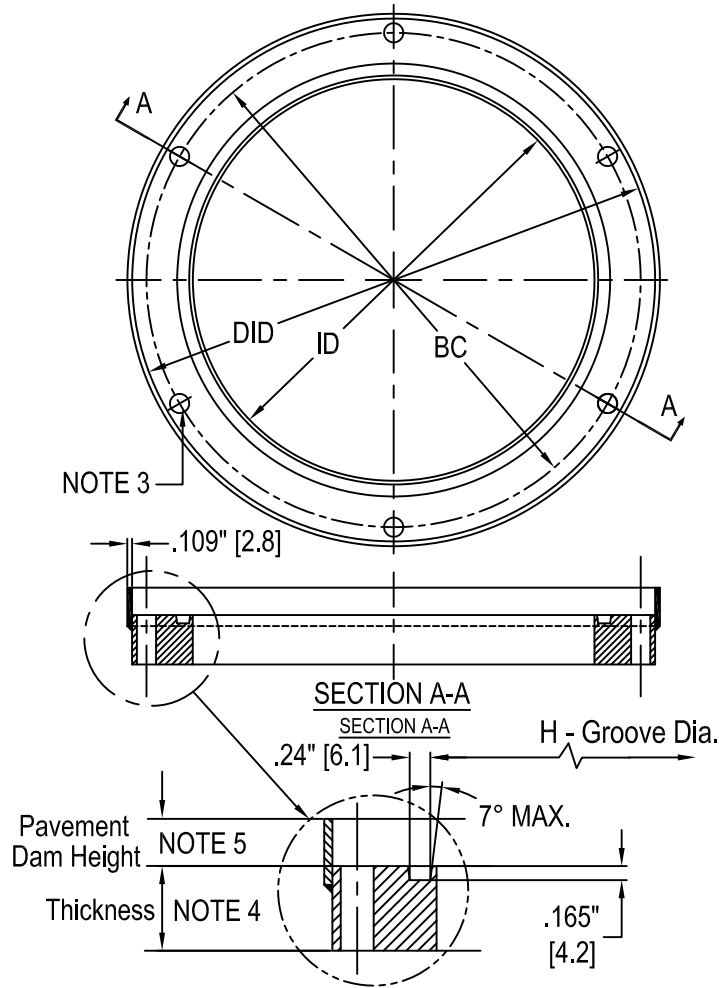
[] = dimensions in metrics; mm.

L-868 Class 1A Flange Ring w/ Pavement Dam



L-868 Class 1A Flange Ring w/ Pavement Dam

1. Approved and Certified to FAA Advisory Circular AC150/5345-42 (Current Revision) L868 class 1A
Size: B=12", C=15"
A=10" / AC150/5345-42
2. Flange Rings with Pavement Dam made to Class 1A:
are zinc plated with O.D. wash
3. (6) 7/16" equally spaced, thru holes
4. Available from .250" to 2" thickness in
1/16" increments designated with the
last 2 digits in product number
(ex. 1/2" thick size B Flange Ring is AF540208Y)
5. * 5/8" pavement dam height, standard.
** 1 1/8" pavement dam height standard.
Special height pavement dams available
6. Flange rings are shipped with:
(6) 3/8"-16 x Ring Thickness + 1 1/8" Min.
Stainless hex head cap screws
(6) 3/8", 2 piece locking washers
(JI Pt. No. 10680607)
(1) 'O' ring gasket
10" - (10530791)
12" - (10530021)
15" - (10530274)



TYPE	DID	ID	BC	H
* AF5102__Y 10" L868A See Note 1	10.125" [257.2]	8" [203.2]	9.25" [235]	8.145" [206.9]
* AF5402__Y 12" L868B	12.125" [308]	10" [254]	11.25" [285.8]	10.145" [257.7]
* AF5502__Y 15" L868C	15.125" [384.2]	13" [330.2]	14.25" [362]	13.145" [333.9]
** AF5702__Y 15" L868C	17.375" [441.3]	13" [330.2]	14.25" [362]	13.145" [333.9]

* SEE NOTE 5
** SEE NOTE 5

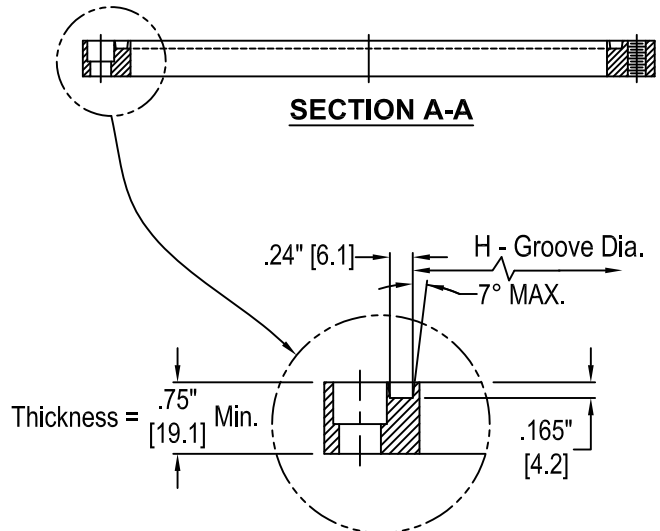
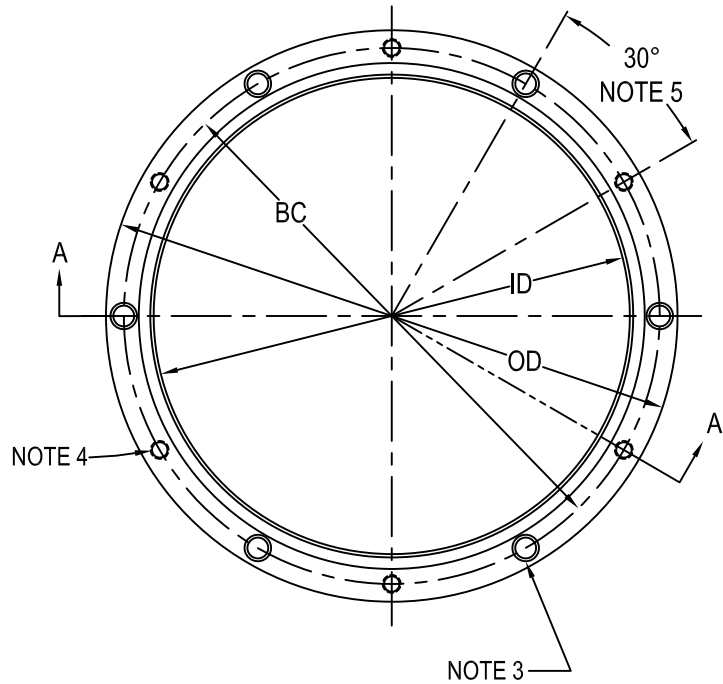
[] = dimensions in metrics; mm.

L-868 B Class 1A & 1B Flange Ring w/ Azimuth Correction



L-868 Class 1A Flange Ring w/ Azimuth Correction

1. Approved and Certified to FAA Advisory Circular AC150/5345-42 (Current Revision) L868 class 1A & 1B Size: B=12"
2. Flange Rings made to Class 1A:
are zinc plated with O.D. wash
Flange Rings made to Class 1B:
are plated as per Class 1A plus they are sealed with Vega Kote anti-corrosion barrier coating specified with a "VK" suffix on Part Number (ex.- AFB543412VK)
-Also Available Are-
Flange Rings made from 300 Series Stainless Steel which comply with Class 1B corrosion resistance requirements-specified with an "AFS" prefix (ex. - AFS543412)
3. (6) 7/16" Ø equally spaced, thru holes with 9/16" Ø x 7/16" deep counter bore
4. (6) 3/8"-16 equally spaced, tapped holes
5. For other than 30° correction, field measurements are required
6. Flange rings are shipped with:
(6) 3/8"-16 x 1 1/4" Stainless hex head cap screws (10650202) - Other heights are available
(6) 3/8", 2 piece locking washers (10680607)
(1) 'O' ring gasket 10" - (10530021)



TYPE	CLASS	OD	ID	BC	H
AF543412 12" L868B	1A	12"	10"	11.25"	10.145"
		[305]	[254]	[285.8]	[257.7]
AFS543412 AFB543412VK	1B	12"	10"	11.25"	10.145"
		[305]	[254]	[285.8]	[257.7]

[] = dimensions in metrics; mm.

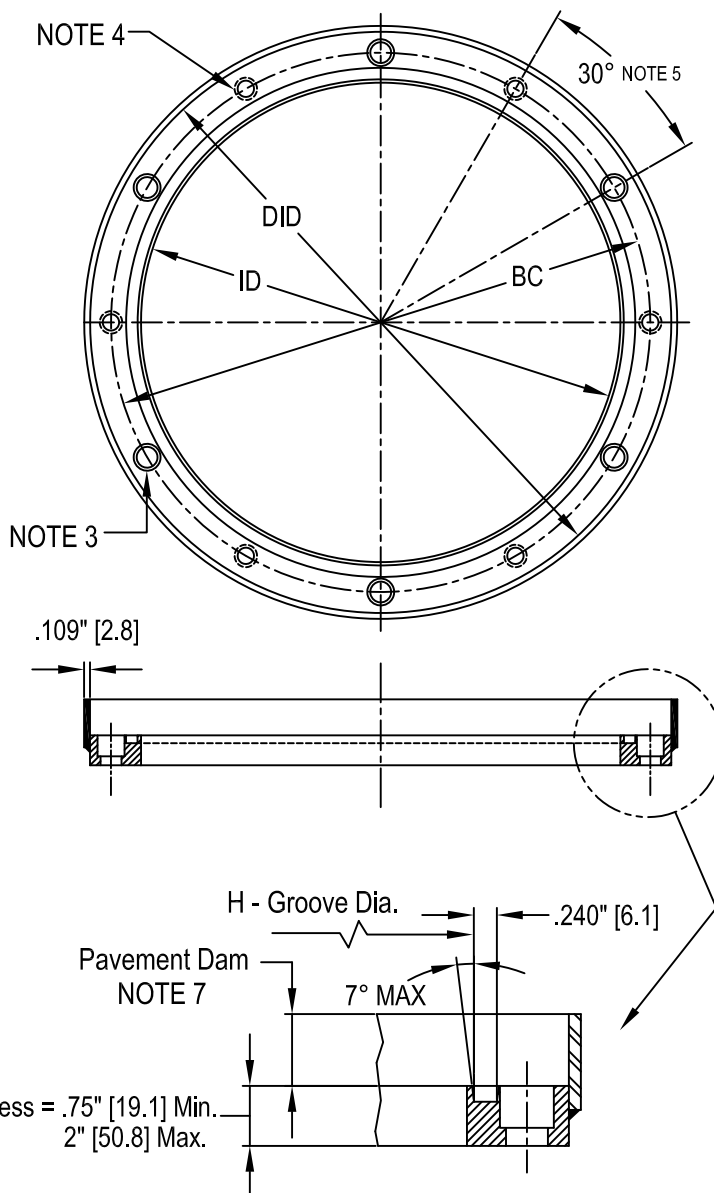
L-868 B Class 1A & 1B Flange Ring w/

Azimuth Correction & Pavement Dam



Flange Ring w/ Azimuth Correction & Pavement Dam

1. Approved and Certified to FAA Advisory Circular AC150/5345-42 (Current Revision) L868 class 1A & 1B Size: B=12"
2. Flange Rings with Pavement Dam made to Class 1A: are zinc plated with O.D. wash
Flange Rings with Pavement Dam made to Class 1B: are plated as per Class 1A plus they are sealed with Vega Kote anti-corrosion barrier coating specified with a "VK" suffix on Part Number (ex.- AFB543412YVK)
-Also Available Are-
Flange Rings with Pavement Dam made from 300 Series Stainless Steel which comply with Class 1B corrosion resistance requirements -specified with an "AFS" prefix (ex. - AFS543412Y)
3. (6) 7/16" equally spaced, thru holes with 9/16" Ø x 7/16" deep counter bore
4. (6) 3/8"-16 equally spaced, tapped holes
5. For other than 30° correction, field measurements are required
6. Specify ring thickness in 1/16" increments by filling in missing parameters in Product Number as follows: .75" thick ring = AW543412Y (for 12/16ths thick ring)
7. 5/8" Pavement Dam height, standard
Special height pavement dams available
8. Flange rings are shipped with:
(6) 3/8"-16 x 1 1/4" Stainless hex head cap screws (10650202) - Other heights are available
(6) 3/8", 2 piece locking washers (10680607)
(6) 'O' ring gasket 10" - (10530021)



TYPE	CLASS	DID	ID	BC	H
AF5434__Y 12" L868B	1A	12.125"	10"	11.25"	10.145"
		[308]	[254]	[285.8]	[257.7]
AFS5434__Y 12" L868B	1B	12.125"	10"	11.25"	10.145"
		[308]	[254]	[285.8]	[257.7]

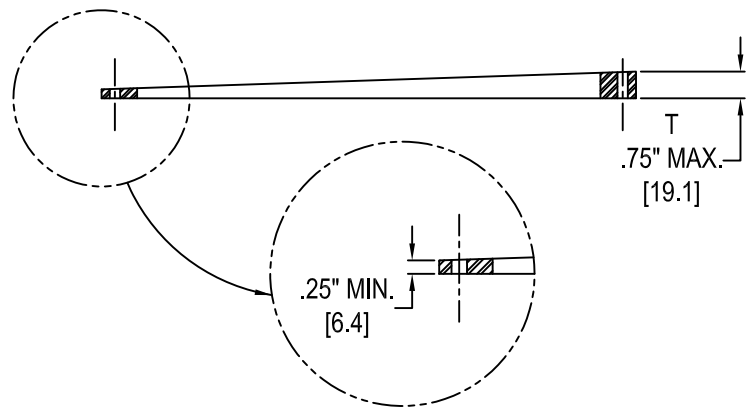
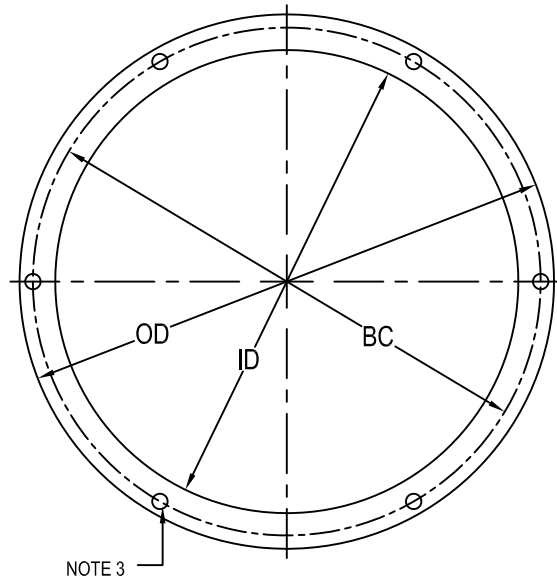
[] = dimensions in metrics; mm.

L-868 Class 1A Bevel Spacer Ring



L-868 Class 1A Bevel Spacer Ring

- Approved and Certified to FAA Advisory Circular AC150/5345-42 (Current Revision) L868 class 1A
Size: A=8", B=12", C=15"
* A=10" / AC150/5345-42H
- Bevel Spacer Rings made to Class 1A :
Galvanized to ASTM-A123/A123M-02
- (6) 7/16" Ø equally spaced, thru holes
- Customer to specify thickness at high and low points and their azimuth location to the nearest bolt hole (Must specify if high & low points are aligned with holes or between holes)
- Available in 1/16" increments
1/2" Maximum Bevel
- Spacers are shipped with:
(6) 3/8"-16 x (Max. Ring Thickness + 1 1/8") Min.
Stainless hex head cap screws
(6) 3/8", 2 piece locking washers
(JI Pt. No. 10680607)



BOTTOM/MIDDLE TO MIDDLE/TOP SECTION SPACER

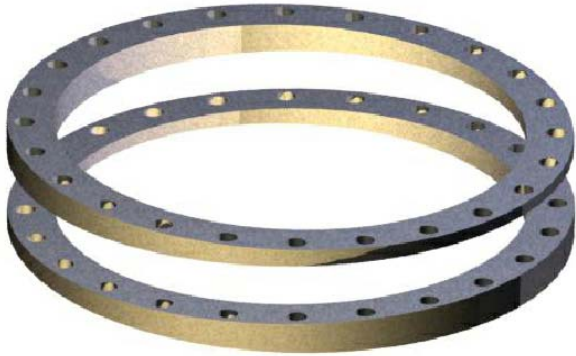
TYPE	OD	ID	BC
AR5114 10" L868A *See Note 1	10.375" [263.5]	6" [152.4]	8.25" [209.6]
AR5414 12" L868B	13.50" [342.9]	9.25" [235]	10.25" [260.4]
AR5514 15" L868C	16" [406.4]	12.375" [314.3]	13.25" [336.6]

LIGHT INTERFACE SPACER

TYPE	OD	ID	BC
AR0824 8" L868A * See Note 1	8" [203.2]	6.5" [165.1]	7.25" [184.2]
AR5124 10" L868A * See Note 1	10" [254]	8" [203.2]	9.25" [235]
AR5424 12" L868B	12" [304.8]	10" [254]	11.25" [285.8]
AR5524 15" L868C	15" [381.0]	13" [330.2]	14.25" [362]

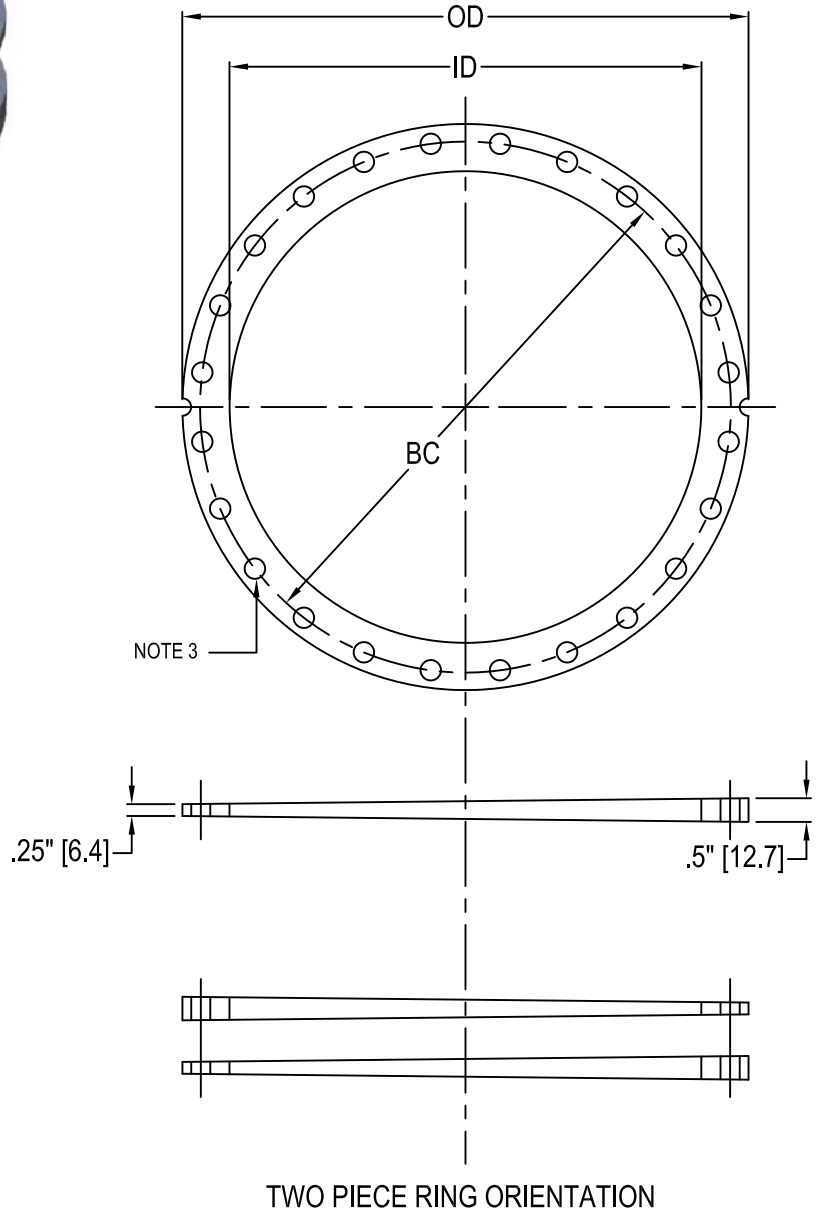
[] = dimensions in metrics; mm.

L-868 B Class 1A "Dial a Bevel" Two Piece Beveled Ring Set



"Dial a Bevel" for L-868 B light bases

1. Approved and Certified to FAA Advisory Circular AC150/5345-42 (Current Revision) L-868 Class 1A
2. Material: Aluminum Alloy 413.1
3. (24) 7/16" \varnothing equally spaced, thru holes
4. Sold as pairs
5. Beveled Ring Set shipped with:
Bolt Packup #6108 which contains:
(6) 3/8"-16 x 3" stainless hex head cap screws (10650216)
(6) 3/8", 2 piece locking washers (10680607)



TYPE	ID	OD	BC
AR5424AL	10"	12"	11.25"
12" L868B	[254]	[304.8]	[285.8]

[] = dimensions in metrics; mm.

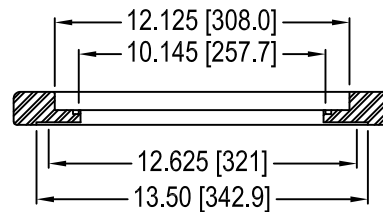
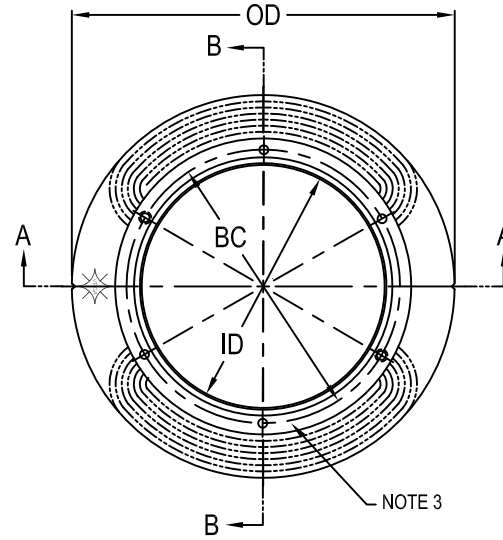
In Pavement Bi-Directional Snow Plow Ring Existing / New Construction Style 2 & 3



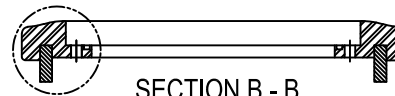
Bi-Directional Snow Plow Ring - Engineering Brief 85

1. Material: Ductile Iron
2. Finish: Black Powder Coat
3. (6) 7/16" equally spaced, thru holes
(2) opposing holes are tapped 1/2-13 for lifting eye
4. Radius on all corners 1/8" unless otherwise noted
5. Snow Plow Ring Shipped with:
10" 'O' ring, (10530021)
Bolt Packup (6109) which contains:
(6) 3/8-16 x 3 1/2" stainless hex head cap screws (10650218)
(6) 3/8", 2 piece locking washers (10680607)
6. Optional: (4) 1/2" Ø x 1 1/2" long
* Stainless Steel Spring Pins
* AW54__000 = Without Spring Pins
* AW54__00P = With Spring Pins

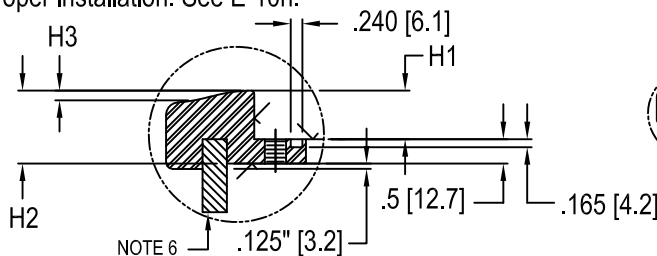
7. Recommend using AR5424AL Dial-a-Bevel Spacer Rings for proper installation. See E-10h.



SECTION A - A



SECTION B - B



TYPE	OD	ID	BC	H1	H2	H3
AW544400 * 12" L-868B STYLE 3	15.75" [400.1]	10" [254]	11.25" [285.8]	1" [25.4]	1.5" [38.1]	.25" [6.4]
AW545400 * 12" L-868B STYLE 2	17.875" [454]	10" [254]	11.25" [285.8]	1.25" [31.8]	1.75" [44.5]	.5" [12.7]

[] = dimensions in metrics; mm.

* SEE NOTE 6

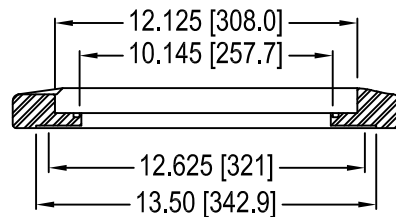
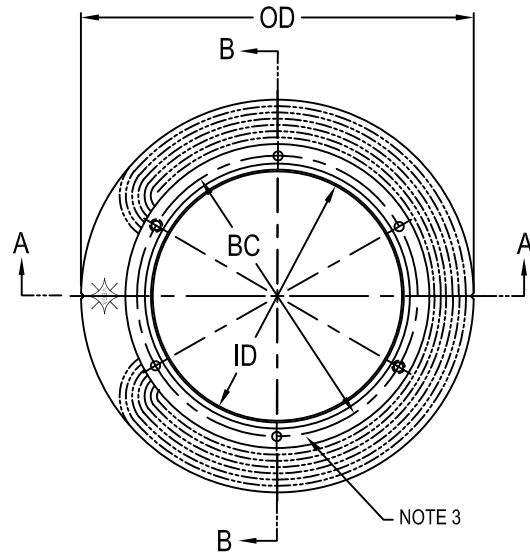
E-11h (rev 0)

In Pavement Uni-Directional Snow Plow Ring Runway / Approach Style 2 New Construction

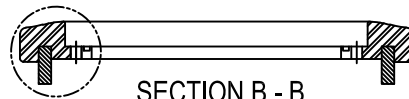


Uni-Directional Snow Plow Ring - Engineering Brief 85

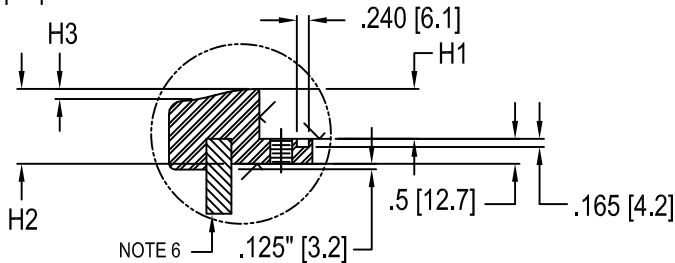
1. Material: Ductile Iron
2. Finish: Black Powder Coat
3. (6) 7/16" equally spaced, thru holes
(2) opposing holes are tapped 1/2-13 for lifting eye
4. Radius on all corners 1/8" unless otherwise noted
5. Snow Plow Ring Shipped with:
10" 'O' ring, (10530021)
Bolt Packup (6109) which contains:
(6) 3/8-16 x 3 1/2" stainless hex head cap screws (10650218)
(6) 3/8", 2 piece locking washers (10680607)
6. Optional: (4) Ø1/2" x 1 1/2" long
Stainless Steel Spring Pins
* AW546400₀ = Without Spring Pins
* AW546400_P = With Spring Pins
7. Recommend using AR5424AL Dial-a-Bevel Spacer Rings for proper installation. See E-10h.



SECTION A - A



SECTION B - B



TYPE	OD	ID	BC	H1	H2	H3
AW546400 * 12" L-868B STYLE 2	17.875"	10"	11.25"	1.25"	1.75"	.5"
	[454]	[254]	[285.8]	[31.8]	[44.5]	[31.8]

[] = dimensions in metrics; mm.

* SEE NOTE 6

E-13h (rev 0)

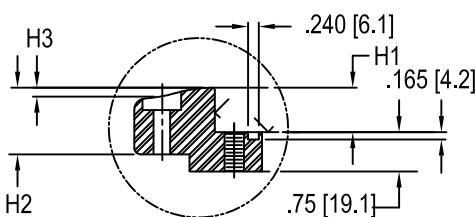
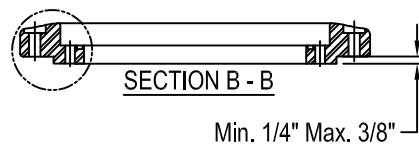
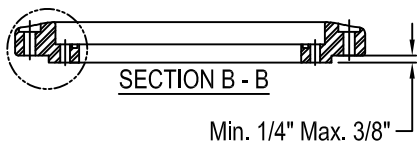
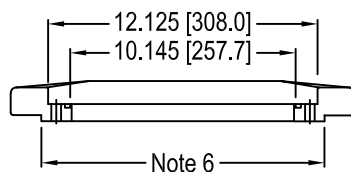
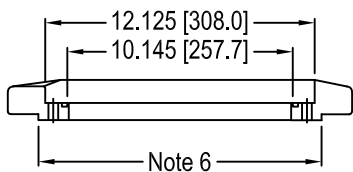
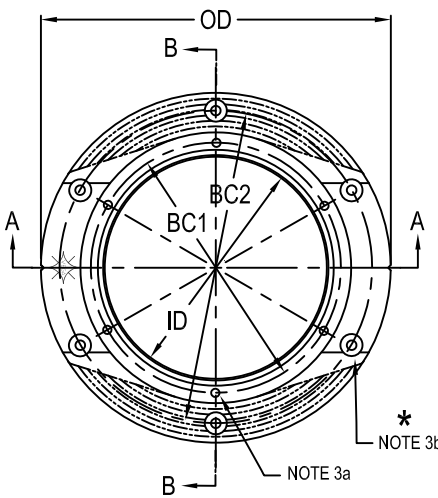
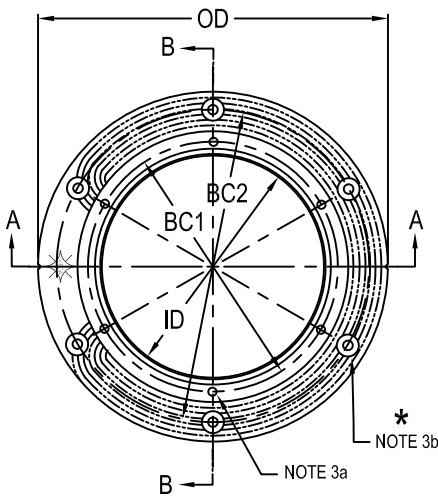
In Pavement Uni/Bi-Directional Snow Plow Ring Runway / Approach Style 2 Existing / New Construction



Uni-Directional Snow Plow Ring

Bi-Directional Snow Plow Ring

Engineering Brief 85



1. Material: Ductile Iron
2. Finish: Black Powder Coat
- 3a. (6) 3/8-16 equally spaced tapped holes
- 3b. (6) Ø7/16" equally spaced, thru holes
* with 1 1/8" Ø x 1/4" deep counter bore
NOTE: L-867D / E-1315 bolt pattern placement must be field verified for proper alignment on AW5465000 And AW5467000
4. Radius on all corners 1/8" unless otherwise noted
5. Snow Plow Ring Shipped with:
10" 'O' ring, (10530021)
Bolt Packup (6109) which contains:
(6) 3/8"-16 x 3 1/2" stainless hex head cap screws (10650218)
(6) 3/8", 2 piece locking washers (10680607)
6. AW5465 - 12.25" [312.9] throat projection for L-867D / E-1315
AW5466 - 12.875" [328.8] throat projection for L-868C
AW5467 - 12.25" [312.9] throat projection for L-867D / E-1315
AW5468 - 12.875" [328.8] throat projection for L-868C

TYPE	OD	ID	BC1	BC2	H1	H2	H3
AW5465000 *16" L867D / E-1315 STYLE 2 /UNI-DIRECT.	17.25" [400.1]	10" [254]	11.25" [285.8]	14.25" [363.9]	1.25" [31.8]	1.75" [44.5]	.5" [12.8]
AW5466000 15" L868C STYLE 2 /UNI-DIRECT.	17.25" [454]	10" [254]	11.25" [285.8]	14.25" [363.9]	1.25" [31.8]	1.75" [44.5]	.5" [12.8]
AW5467000 *16" L867D / E-1315 STYLE 2 /BI-DIRECT.	17.25" [400.1]	10" [254]	11.25" [285.8]	14.25" [363.9]	1.25" [31.8]	1.75" [44.5]	.5" [12.8]
AW5468000 15" L868C STYLE 2 /BI-DIRECT.	17.25" [454]	10" [254]	11.25" [285.8]	14.25" [363.9]	1.25" [31.8]	1.75" [44.5]	.5" [12.8]

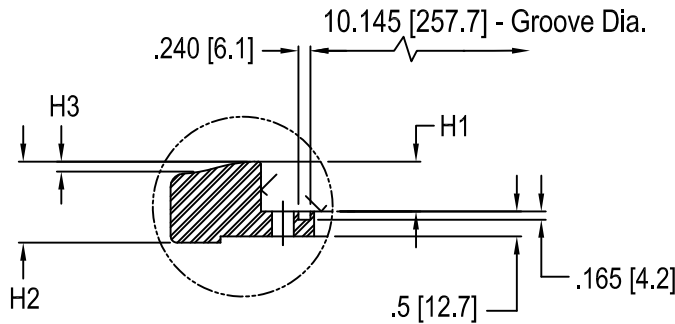
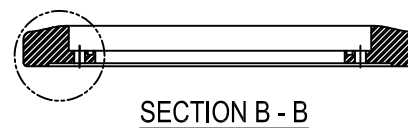
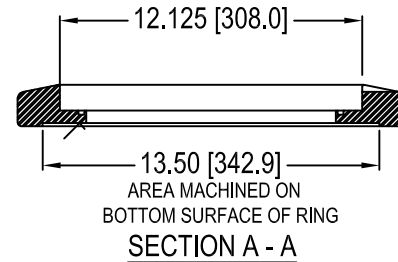
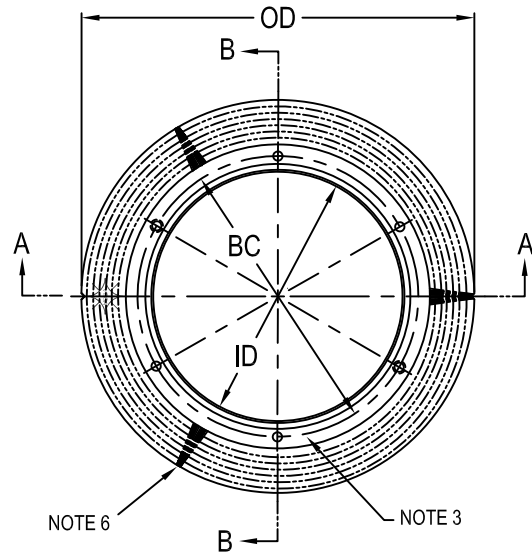
[] = dimensions in metrics; mm.
* SEE NOTE 3b

In Pavement Omni-Directional Snow Plow Ring Taxiway / Apron Style 3 New Construction



Omni-Directional Snow Plow Ring - Engineering Brief 85

1. Material: Ductile Iron
2. Finish: Black Powder Coat
3. (6) 7/16" equally spaced, thru holes
(2) opposing holes are tapped 1/2-13 for lifting eye
4. Radius on all corners 1/8" unless otherwise noted
5. Snow Plow Ring Shipped with:
10" 'O' ring, (10530021)
Bolt Packup #6109 which contains:
(6) 3/8"-16 x 3 1/2" stainless hex head cap screws (10650218)
(6) 3/8", 2 piece locking washers (10680607)
6. 3 slots for drainage.
7. Recommend using AR5424AL Dial-a-Bevel Spacer Rings for proper installation. See E-10h.



TYPE	OD	ID	BC	H1	H2	H3
AW5474000 12" L-868B STYLE 3	16"	10"	11.25"	1.13"	1.75"	.25"
	[406.4]	[254]	[285.8]	[28.6]	[44.5]	[6.4]

[] = dimensions in metrics; mm.

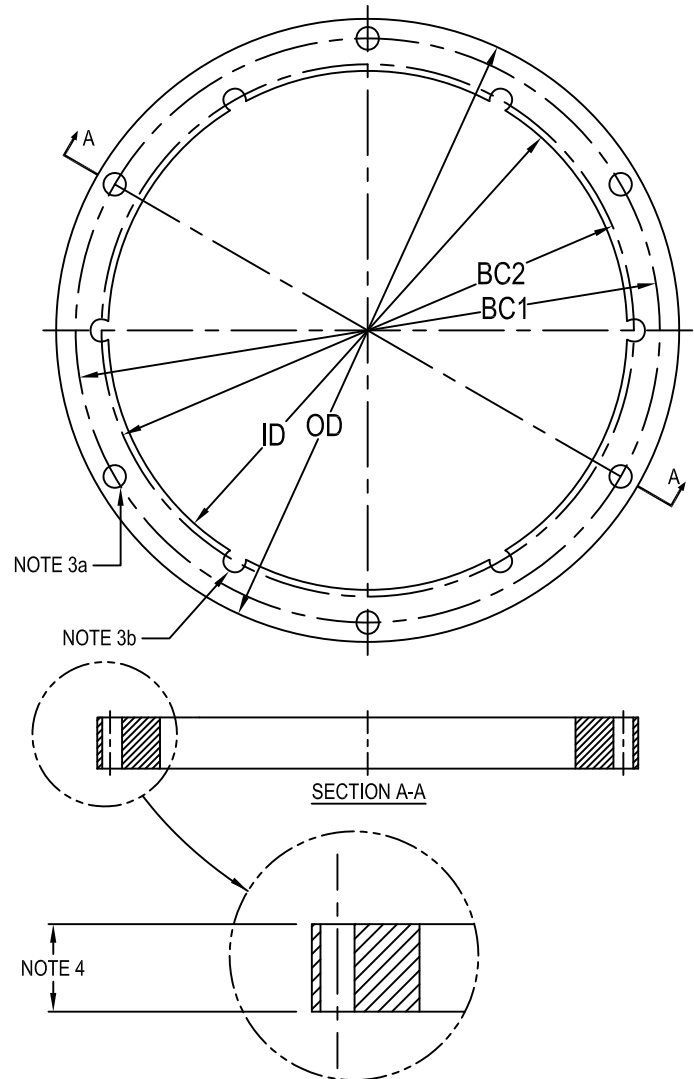
E-15h (rev 0)

L-868 Class 1B Spacer Ring Bottom / Middle / Top Sections



Size B Spacer Ring

1. Approved and Certified to FAA Advisory Circular AC150/5345-42 (Current Revision) L868 class 1B
Size: B=12", C=15"
2. Spacer Rings made to Class 1B :
Are finished as per Class 1A plus they are sealed with Vega Kote anti-corrosion barrier coating specified with a "VK" suffix on Part Number (ex.- AR542212VK)
-Also Available Are-
Spacer Rings made from 300 Series Stainless Steel which comply with Class 1B corrosion resistance requirements-specified with an "ARS" prefix (ex.- ARS542212)
- 3a. (6) 7/16" Ø equally spaced, thru holes
- 3b. (6) 7/16" Ø equally spaced, partial holes
4. Available in 1/16" increments
5/16" min. to 2 3/16" max.
5. Spacers above 1/4" thickness are shipped with:
(6) 3/8"-16 x (Ring Thickness + 1 1/8") Min. stainless hex head cap screws
(6) 3/8", 2 piece locking washers (JI Pt. No. 10680607)



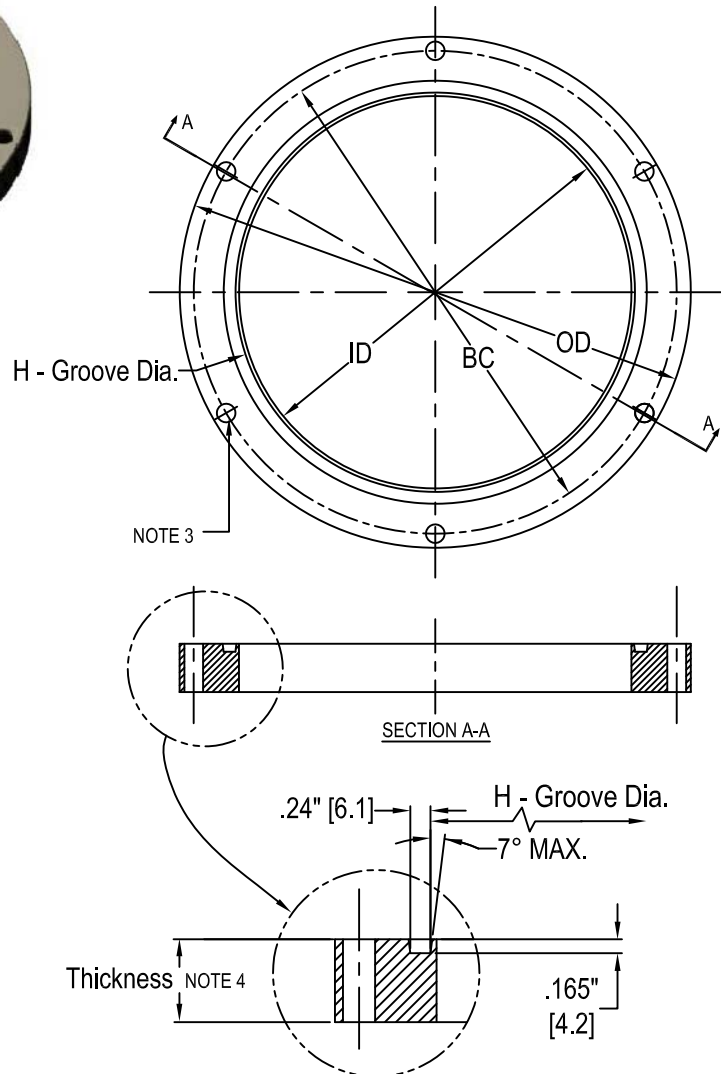
	TYPE	OD	ID	BC1	BC2
L868B	ARS5422__	12"	10"	11.25"	10.25"
12"	AR5422__VK	[305]	[254]	[285.8]	[260.4]
L868C	ARS5522__	15"	13"	14.25"	13.25"
15"	AR5522__VK	[381]	[330.2]	[362]	[336.5]

[] = dimensions in metrics; mm.

L-868 Class 1B Flange Ring



L-868 Class 1B Flange Ring



1. Approved and Certified to FAA Advisory Circular AC150/5345-42 (Current Revision) L868 class 1B
Size: A=8", B=12", C=15"
A=10" / AC150/5345-42

2. Flange Rings made to Class 1B:
are plated as per Class 1A plus they are sealed with Vega Kote anti-corrosion barrier coating specified with a "VK" suffix on Part Number (ex.- AF540212VK)
-Also Available Are-

Flange Rings made from 300 Series Stainless Steel which comply with Class 1B corrosion resistance requirements-specified with an "AFS" prefix (ex. - AFS540212)

3. (6) 7/16" Ø equally spaced, thru holes

4. Available from 1/4" to 2 3/16" thickness in 1/16" increments designated with the last 2 digits in product number (ex. 1/2" thick size B Flange Ring is AF540208)

5. Flange rings are shipped with:
(6) 3/8"-16 x T + 1 1/8" stainless hex head cap screws
(6) 3/8", 2 piece locking washers (10680607)
(1) 'O' ring gasket
8" - (N/A)
10" - (10530791)
12" - (10530021)
15" - (10530274)

TYPE	OD	ID	BC	H
L868A 8" AFS0802__	8"	6.5"	7.25"	6.145"
8" AF0802__VK	[203.2]	[165.1]	[184.2]	[156.1]
See Note 1 L868A 10" AFS5102__	10"	8"	9.25"	8.145"
10" AF5102__VK	[254]	[203.2]	[235]	[206.9]
L868B 12" AFS5402__	12"	10"	11.25"	10.145"
12" AF5402__VK	[305]	[254]	[285.8]	[257.7]
L868C 15" AFS5502__	15"	13"	14.25"	13.145"
15" AF5502__VK	[381]	[330.2]	[362]	[333.9]

[] = dimensions in metrics; mm.

L-868 Class 1A Multi-Hole Spacer Ring w/ Pavement Dam



L-868 Class 1A MH Spacer Ring w/ Pavement Dam

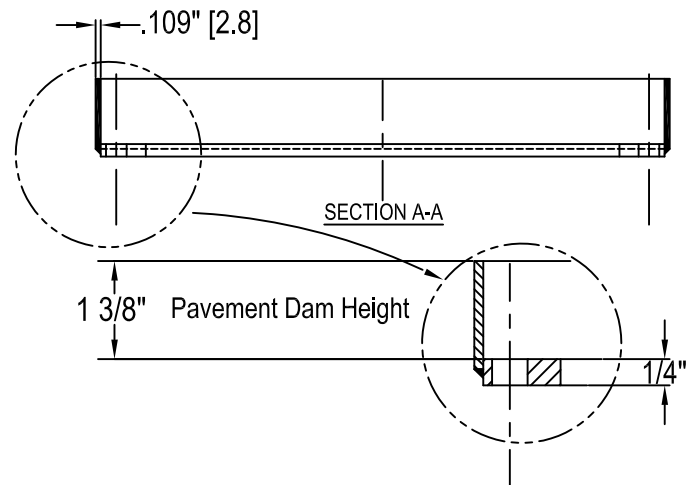
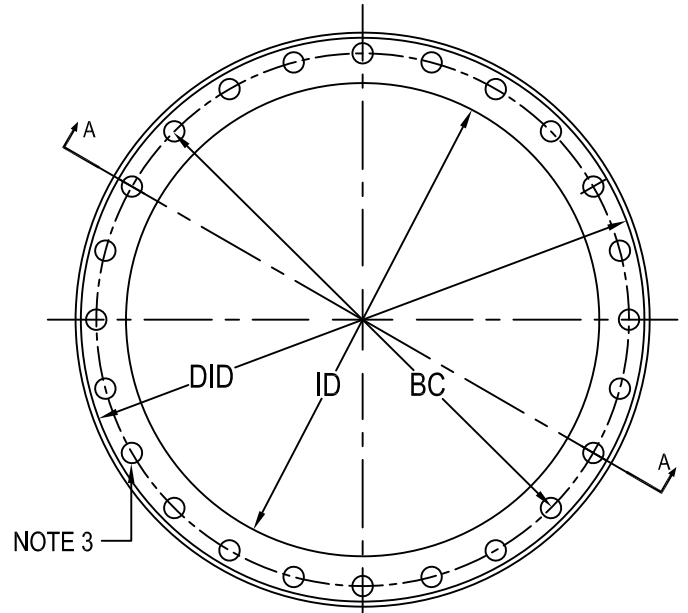
1. Approved and Certified to FAA Advisory Circular AC150/5345-42 (Current Revision) L868 class 1A Size: B-12"

2. Galvanized to ASTM-A123/A123M

3. (24) 7/16" Ø equally spaced, thru holes

4. 1 3/8" pavement dam height, standard.

5. No hardware shipped with spacer ring



TYPE	DID	ID	BC
L868B 12" AR542104YMH	12.125" [308]	10.0" [254]	11.25" [285.8]

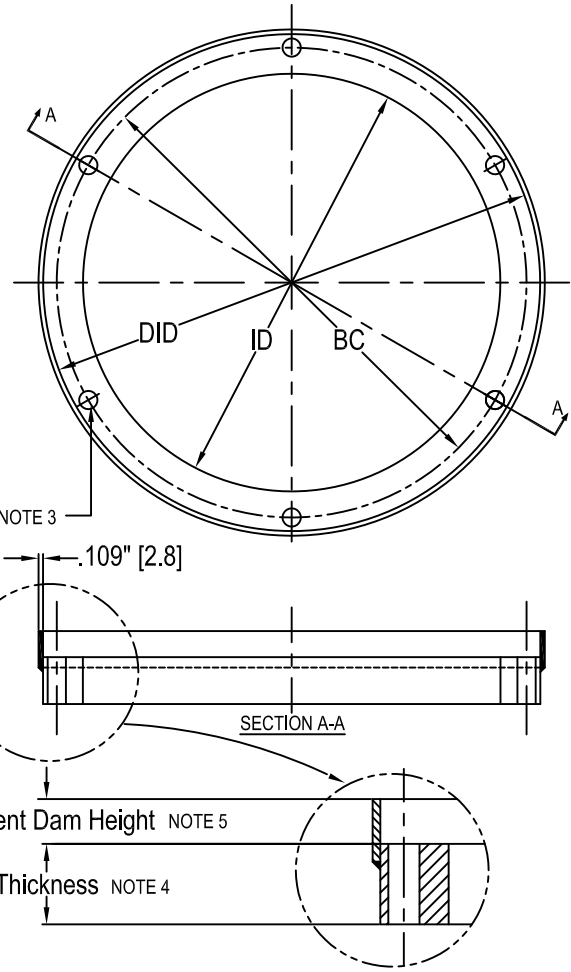
[] = dimensions in metrics; mm.

L-868 Class 1B Spacer Ring w/ Pavement Dam



L-868 Class 1B Spacer Ring w/ Pavement Dam

- Approved and Certified to FAA Advisory Circular AC150/5345-42 (Current Revision) L868 class 1B
Size: A-8", B-12", C-15"
A=10" / AC150/5345-42
- Spacer Rings with Pavement Dam made to Class 1B :
Are finished as per Class 1A plus they are sealed with Vega Kote anti-corrosion barrier coating specified with a "VK" suffix on Part Number (ex.- AR542112YVK)
-Also Available Are-
Spacer Rings with Pavement Dam made from 300 Series Stainless Steel which comply with Class 1B corrosion resistance requirements-specified with an "ARS" prefix (ex.- ARS542112Y)



- (6) 7/16" Ø equally spaced, thru holes
- Available in .125" [3.2] & .250" [6.4] to .750" [19.1] thickness in 1/16" increments
Example of 1/8" thickness Spacer Rings Class 1A with Pavement Dam:
AR512102Y AR542102Y

- * 5/8" pavement dam height, standard.
 - ** 1 1/8" pavement dam height standard.
- Special height pavement dams available

- Spacers above 1/4" thickness are shipped with: *
(6) 3/8"-16 x (Ring Thickness + 1/8" minimum) stainless hex head cap screws
(6) 3/8", 2 piece locking washers **
(JI Pt. No. 10680607)

	TYPE	DID	ID	BC
L868A 8"	ARS0821__Y	8.313"	6.5"	7.25"
	AR0821__YVK	[211.2]	[165.1]	[184.2]
SEE NOTE 1 L868A 10"	ARS5121__Y	10.313"	8"	9.25"
	AR5121__YVK	[262]	[203.2]	[235]
L868B 12"	ARS5421__Y	12.313"	10"	11.25"
	AR5421__YVK	[312.8]	[254]	[285.8]
L868C 15"	ARS5521__Y	15.313"	13"	14.25"
	AR5521__YVK	[384.2]	[330.2]	[362]
L868C 15"	ARS5721__Y	17.375"	13"	14.25"
	AR5721__YVK	[441.3]	[330.2]	[362]

* SEE NOTE 5
** SEE NOTE 5

[] = dimensions in metrics; mm.

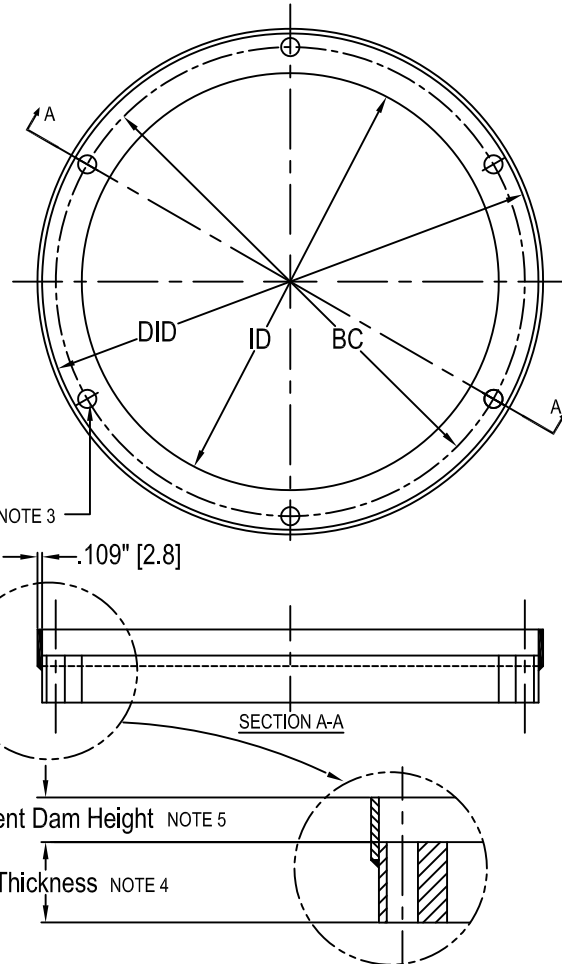


L-868 Class 1B Spacer Ring w/ Pavement Dam (For Metric Hardware)



L-868 Class 1B Spacer Ring w/ Pavement Dam

- Approved and Certified to FAA Advisory Circular AC150/5345-42 (Current Revision) L868 class 1B
 Size: A-8", B-12", C-15"
 A=10" / AC150/5345-42 Rev C
- Spacer Rings with Pavement Dam made to Class 1B :
 Are finished as per Class 1A plus they are sealed with Vega Kote anti-corrosion barrier coating specified with a "VK" suffix on Part Number (ex.- AR542112YVK)
 -Also Available Are-
 Spacer Rings with Pavement Dam made from 300 Series Stainless Steel which comply with Class 1B corrosion resistance requirements-specified with an "ARS" prefix (ex.- ARS542112Y)



- (6) 7/16" Ø equally spaced, thru holes
- Available in .125" [3.2] & .250" [6.4] to .750" [19.1] thickness in 1/16" increments
 Example of 1/8" thickness Spacer Rings Class 1A with Pavement Dam:
 AR512102Y AR542102Y

- * 5/8" pavement dam height, standard.
- ** 1 1/8" pavement dam height standard.
 Special height pavement dams available

- Spacers above 1/4" thickness are shipped with: *
 (6) M10-1.5 x (Ring Thickness + 1/8" minimum) stainless hex head cap screws
 (6) 2 piece locking washers **
 (JI Pt. No. 10680607)

	TYPE	DID	ID	BC
L868A	ARS0821__YM	8.313"	6.5"	7.25"
8"	AR0821__YMKV	[211.2]	[165.1]	[184.2]
SEE NOTE 1	ARS5121__YM	10.313"	8"	9.25"
L868A	AR5121__YMKV	[262]	[203.2]	[235]
10"	ARS5421__YM	12.313"	10"	11.25"
L868B	AR5421__YMKV	[312.8]	[254]	[285.8]
12"	ARS5521__YM	15.313"	13"	14.25"
L868C	AR5521__YMKV	[384.2]	[330.2]	[362]
15"	ARS5721__YM	17.375"	13"	14.25"
L868C	AR5721__YMKV	[441.3]	[330.2]	[362]

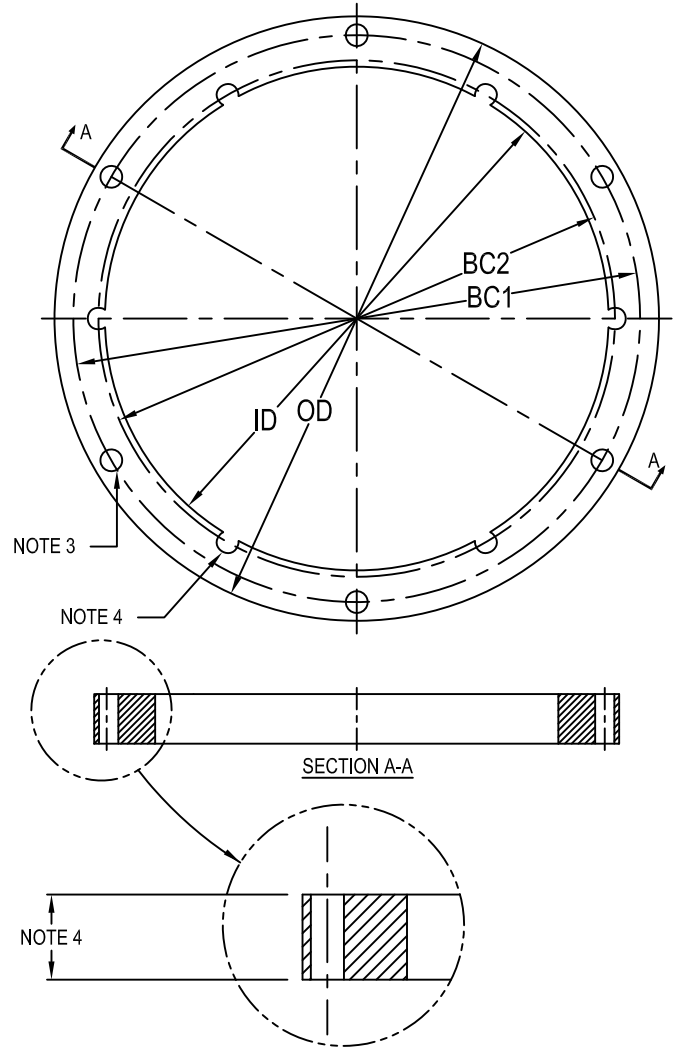
* SEE NOTE 5
 ** SEE NOTE 5

[] = dimensions in metrics; mm.

L-868 Class 1B Spacer Ring



Size B Spacer Ring shown with double bolt pattern



1. Approved and Certified to FAA Advisory Circular AC150/5345-42 (Current Revision) L868 class 1B
Size: A=8", B=12", C=15"
A=10" / AC150/5345-42 Rev C

2. Spacer Rings made to Class 1B :
Are finished as per Class 1A plus they are sealed with Vega Kote anti-corrosion barrier coating specified with a "VK" suffix on Part Number (ex.- AR542112VK)
-Also Available Are-
Spacer Rings made from 300 Series Stainless Steel which comply with Class 1B corrosion resistance requirements-specified with an "ARS" prefix (ex.- ARS542112)

3. (6) 7/16" Ø equally spaced, thru holes

4. Available in 1/16" increments
1/16" min. to 2 1/4" max.

* Size B, 1/16" through 3/8" thick come with double bolt patterns as shown.

** Size C, single bolt pattern standard

5. Spacers above 1/4" thickness are shipped with:
(6) 3/8"-16 x (Ring Thickness + 1/8" minimum) stainless hex head cap screws
(6) 3/8", 2 piece locking washers
(JI Pt. No. 10680607)

TYPE	OD	ID	BC1	BC2
L868A ARS0821 __	8"	6.50	7.25"	—
8" AR0821 __VK	[203.2]	[165.1]	[184.2]	—
SEE NOTE 1 ARS5121 __	10"	8"	9.25"	—
L868A AR5121 __VK	[254]	[203.2]	[235]	—
* L868B ARS5421 __	12"	10"	11.25"	10.25"
12" AR5421 __VK	[305]	[254]	[285.8]	[260.4]
L868C ARS5521 __	15"	13"	14.25"	13.25"
15" AR5521 __VK	[381]	[330.2]	[362]	[336.5]
L868C ARS5721 __	17.375"	13"	14.25"	—
15" AR5721 __VK	[441.3]	[330.2]	[362]	—

[] = dimensions in metrics; mm.

* SEE NOTE 4

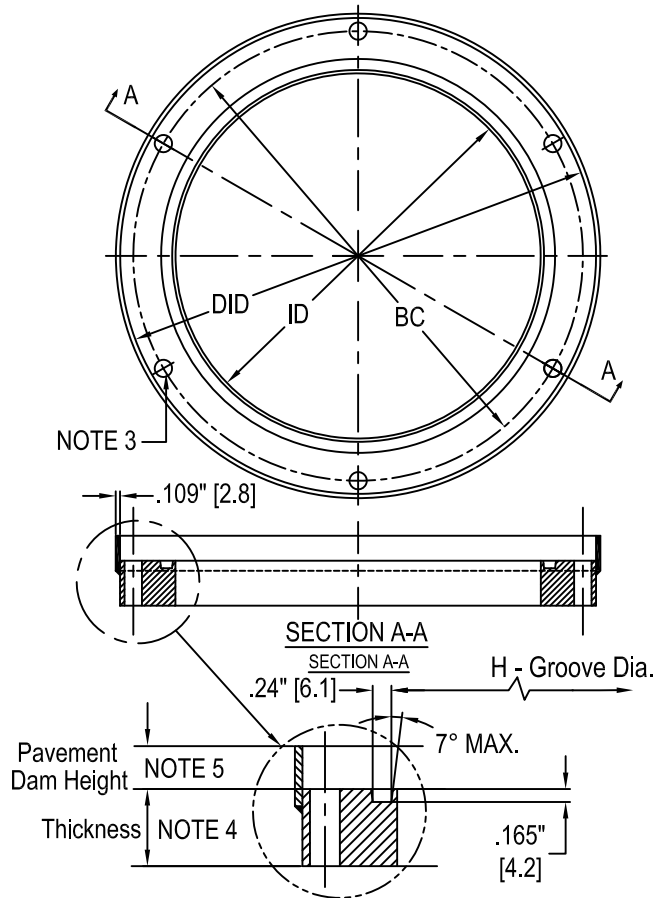
E-19h (rev 0)

L-868 Class 1B Flange Ring w/ Pavement Dam



L-868 Class 1B Flange Ring w/ Pavement Dam

- Approved and Certified to FAA Advisory Circular AC150/5345-42 (Current Revision) L868 class 1B
Size: A=8", B=12", C=15"
A=10" / AC150/5345-42
- Flange Rings with Pavement Dam made to Class 1B: are plated as per Class 1A plus they are sealed with Vega Kote anti-corrosion barrier coating specified with a "VK" suffix on Part Number (ex.- AF540212YVK)
-Also Available Are-
Flange Rings with Pavement Dam made from 300 Series Stainless Steel which comply with Class 1B corrosion resistance requirements -specified with an "AFS" prefix (ex. - AFS540212)
- (6) 7/16" equally spaced, thru holes
- Available from 1/4" to 2 3/16" thickness in 1/16" increments designated with the last 2 digits in product number (ex. 1/2" thick size B Flange Ring is AF540208Y)



- * 5/8" pavement dam height, standard.
** 1 1/8" pavement dam height standard.
Special height pavement dams available *
- Flange rings are shipped with:
(6) 3/8"-16 x Ring Thickness + 1 1/8" Min. *
stainless hex head cap screws
(6) 3/8", 2 piece locking washers
(JI Pt. No. 10680607) *
(1) 'O' ring gasket
8" - (N/A) *
10" - (10530791) *
12" - (10530021) *
15" - (10530274) **

	TYPE	DID	ID	BC	H
L868A 8"	AFS0802__Y	8.313"	6.5"	7.25"	6.145"
	AF0802__YVK	[211.2]	[165.1]	[184.2]	[156.1]
SEE NOTE 1 L868A 10"	AFS5102__Y	10.313"	8"	9.25"	8.145"
	AF5102__YVK	[262]	[203.2]	[235]	[206.9]
L868B 12"	AFS5402__Y	12.313"	10"	11.25"	10.145"
	AF5402__YVK	[312.8]	[254]	[285.8]	[257.7]
L868C 15"	AFS5502__Y	15.313"	13"	14.25"	13.145"
	AF5502__YVK	[384.2]	[330.2]	[362]	[333.9]
L868C 15"	AFS5702__Y	17.375"	13"	14.25"	13.145"
	AF5702__YVK	[441.3]	[330.2]	[362]	[333.9]

* SEE NOTE 5
** SEE NOTE 5

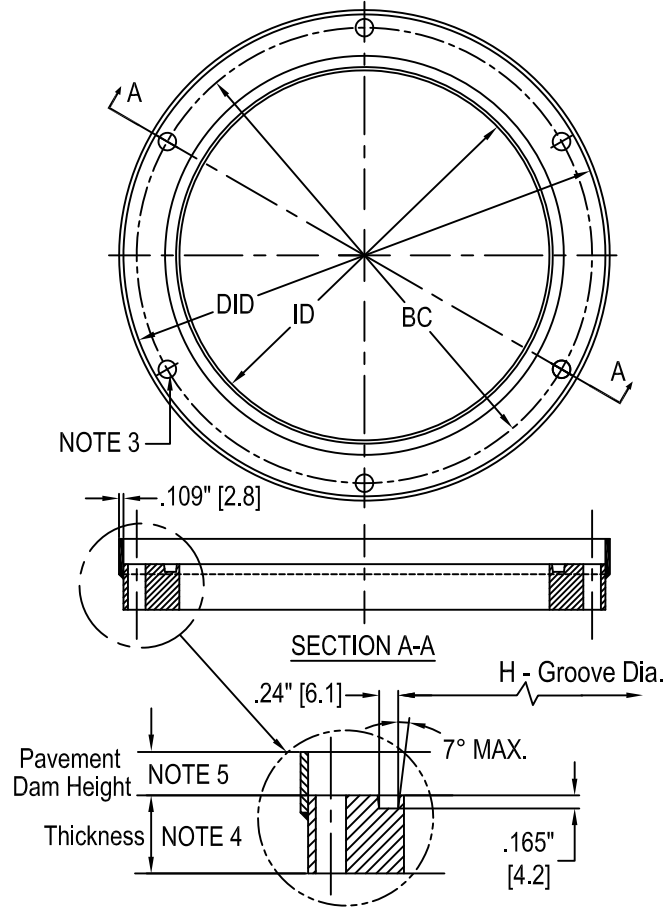
[] = dimensions in metrics; mm.

L-868 Class 1B Flange Ring w/ Pavement Dam (For Metric Hardware)



L-868 Class 1B Flange Ring w/ Pavement Dam

- Approved and Certified to FAA Advisory Circular AC150/5345-42 (Current Revision) L868 class 1B
Size: A=8", B=12", C=15"
A=10" / AC150/5345-42
- Flange Rings with Pavement Dam made to Class 1B: are plated as per Class 1A plus they are sealed with Vega Kote anti-corrosion barrier coating specified with a "VK" suffix on Part Number (ex.- AF540212YVK)
-Also Available Are-
Flange Rings with Pavement Dam made from 300 Series Stainless Steel which comply with Class 1B corrosion resistance requirements -specified with an "AFS" prefix (ex. - AFS540212)
- (6) 7/16" equally spaced, thru holes
- Available from 1/4" to 2 3/16" thickness in 1/16" increments designated with the last 2 digits in product number (ex. 1/2" thick size B Flange Ring is AF540208Y)



- * 5/8" pavement dam height, standard.
** 1 1/8" pavement dam height standard.
Special height pavement dams available *
- Flange rings are shipped with:
 - (6) M10-1.5 x Ring Thickness + 1 1/8" Min.* stainless hex head cap screws
 - (6) 2 piece locking washers (JI Pt. No. 10680607) *
 - (1) 'O' ring gasket
 - 8" - (N/A)
 - 10" - (10530791)
 - 12" - (10530021)
 - 15" - (10530274)

	TYPE	DID	ID	BC	H
L868A	AFS0802__YM	8.313"	6.5"	7.25"	6.145"
8"	AF0802__YMK	[211.2]	[165.1]	[184.2]	[156.1]
SEE NOTE 1	AFS5102__YM	10.313"	8"	9.25"	8.145"
L868A	AF5102__YMK	[262]	[203.2]	[235]	[206.9]
10"					
L868B	AFS5402__YM	12.313"	10"	11.25"	10.145"
12"	AF5402__YMK	[312.8]	[254]	[285.8]	[257.7]
L868C	AFS5502__YM	15.313"	13"	14.25"	13.145"
15"	AF5502__YMK	[384.2]	[330.2]	[362]	[333.9]
L868C	AFS5702__YM	17.375"	13"	14.25"	13.145"
15"	AF5702__YMK	[441.3]	[330.2]	[362]	[333.9]

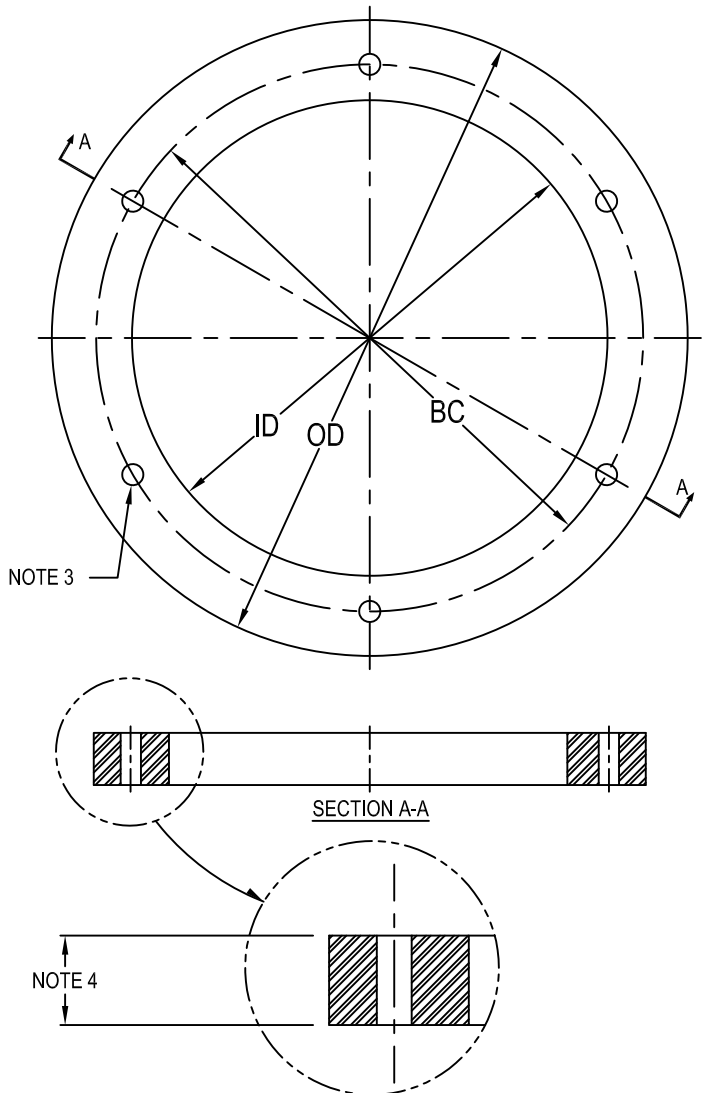
* SEE NOTE 5
** SEE NOTE 5

[] = dimensions in metrics; mm.

L-868 Class 1B Spacer Ring Bottom / Middle Sections



L-868 Size B Spacer Ring



1. Approved and Certified to FAA Advisory Circular AC150/5345-42 (Current Revision) L868 class 1B
Size: A=10" / AC150/5345-42, B=12", C=15"
2. Spacer Rings made to Class 1B :
Are finished as per Class 1A plus they are sealed with Vega Kote anti-corrosion barrier coating specified with a "VK" suffix on Part Number (ex.- AR541112VK)
-Also Available Are-
Spacer Rings made from 300 Series Stainless Steel which comply with Class 1B corrosion resistance requirements-specified with an "ARS" prefix (ex.- ARS541112)
3. (6) 7/16" Ø equally spaced, thru holes
4. Available in 1/16" increments
1/16" min. to 2 3/16" max.
5. Spacers above 1/4" thickness are shipped with:
(6) 3/8"-16 x (Ring Thickness + 1 1/8") Min. stainless hex head cap screws
(6) 3/8", 2 piece locking washers
(JI Pt. No. 10680607)

	TYPE	OD	ID	BC
L868A 10"	ARS5111 __	10"	6"	8.25"
	AR5111 __VK	[254]	[152.4]	[209.5]
L868B 12"	ARS5411 __	12"	9.25"	10.25"
	AR5411 __VK	[305]	[235]	[260.4]
L868C 15"	ARS5511 __	15"	12.375"	13.25"
	AR5511 __VK	[381]	[314]	[336.6]

[] = dimensions in metrics; mm.

L-868 Class 1B Bevel Spacer Ring



L-868 Class 1B Bevel Spacer Ring

1. Approved and Certified to FAA Advisory Circular AC150/5345-42 (Current Revision) L868 class 1B
Size: A=8", B=12", C=15"
* A=10" / AC150/5345-42

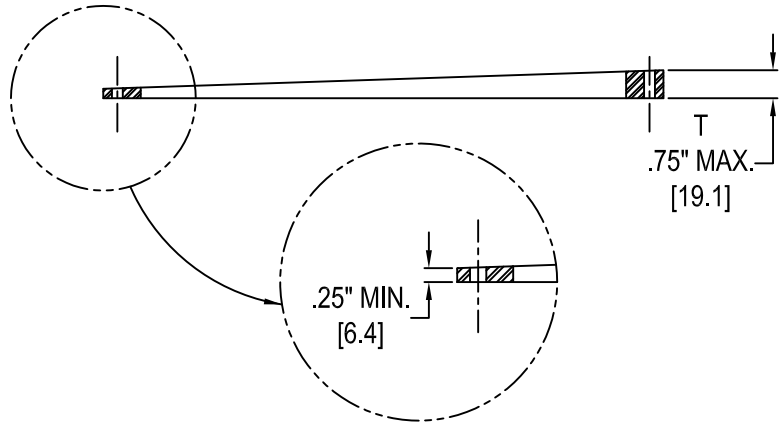
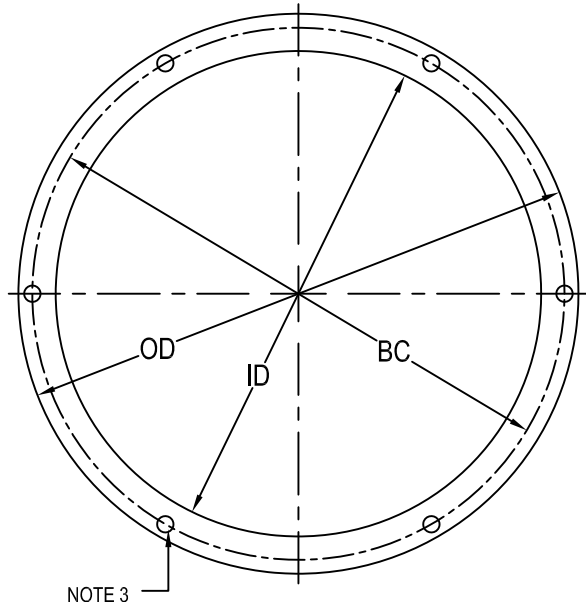
2. Spacer Rings made to Class 1B :
Are finished as per Class 1A plus they are sealed with Vega Kote anti-corrosion barrier coating specified with a "VK" suffix on Part Number (ex.- AR5424VK)
-Also Available Are-
Spacer Rings made from 300 Series Stainless Steel which comply with Class 1B corrosion resistance requirements-specified with an "ARS" prefix (ex.- ARS5424)

3. (6) 7/16" Ø equally spaced, thru holes

4. Customer to specify thickness at high and low points and their azimuth location to the nearest bolt hole (Must specify if high & low points are aligned with holes or between holes)

5. Available in 1/16" increments
3/4" Maximum Bevel

6. Spacers are shipped with:
 - (6) 3/8"-16 x (Max. Ring Thickness + 1 1/8") Min. stainless hex head cap screws
 - (6) 3/8", 2 piece locking washers (JI Pt. No. 10680607)



TYPE	PART NO.	OD	ID	BC
SEE NOTE 1 L868A 8"	ARS0824	8"	6.5"	7.25"
	AR0824VK	[203.2]	[165.1]	[184.2]
SEE NOTE 1 L868A 10"	ARS5124	10"	8"	9.25"
	AR5124VK	[254]	[203.2]	[235]
L868B 12"	ARS5424	12"	10"	11.25"
	AR5424VK	[305]	[254]	[285.8]
L868C 15"	ARS5524	15"	13"	14.25"
	AR5524VK	[381]	[330.2]	[362]

[] = dimensions in metrics; mm.

In Pavement Adapter Style Snow Plow Ring

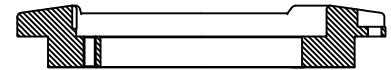
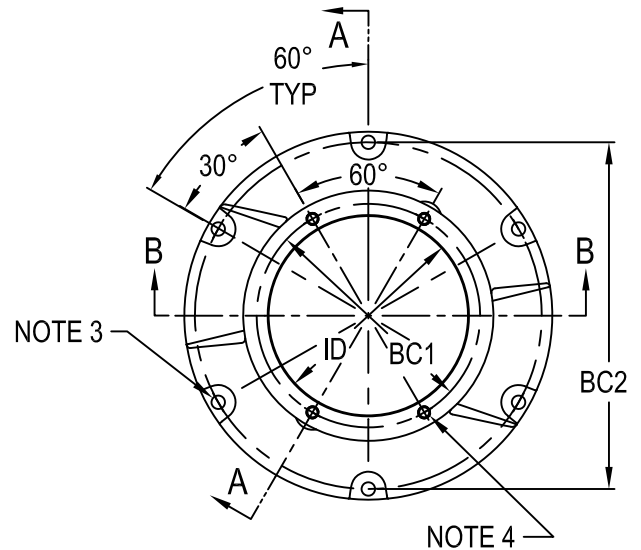


Bi-Directional Snow Plow Ring - Engineering Brief 85

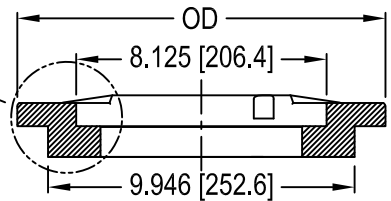
1. Material: Ductile Iron
2. Finish: Black Powder Coat
3. (6) 7/16" equally spaced, thru holes
4. (4) 3/8" - 16 threaded thru holes as shown
5. Snow Plow Ring Shipped with:
 - Bolt Packup #6106 which contains:
 - (6) 3/8"-16 x 2 1/2" stainless hex head cap screws (10650214)
 - (6) 3/8", 2 piece locking washers (10680607)
 - Bulk Packed Hardware #6151:
 - (2) 3/8"-16 x 1 1/4" stainless hex head cap screws (10650202)
 - (2) 3/8", 2 piece locking washers (10670607)
 - (2) 3/8"-16 stainless locating pins (6225HE)
6. Various aperture opening arrangements are available.

Designate by adding the following suffix to the Product No.

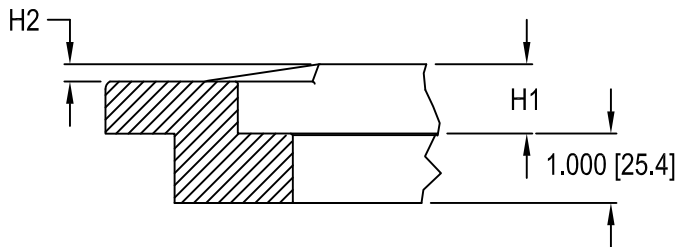
- AW5008HLED1 - SINGLE APERTURE
- AW5008HLED11 - DOUBLE APERTURE
- AW5008HLED11C - DOUBLE APERTURE FOR CURVE
- AW5008HLEDO - OMNI-DIRECTIONAL



SECTION A - A



SECTION B - B



JI PRODUCT NO.	OD	ID	BC1	BC2	H1	H2
AW5008HLED + SUFFIX	11.94"	6.47"	7.25"	11.25"	1"	.38"
8" L-868A SEE NOTE #6 STYLE 3	[303.3]	[164.3]	[184.2]	[285.8]	[25.4]	[9.5]

[] = dimensions in metrics; mm.