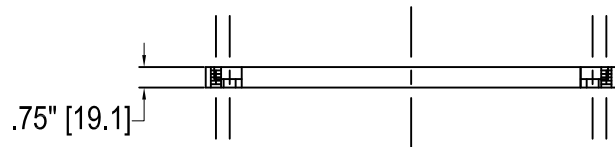
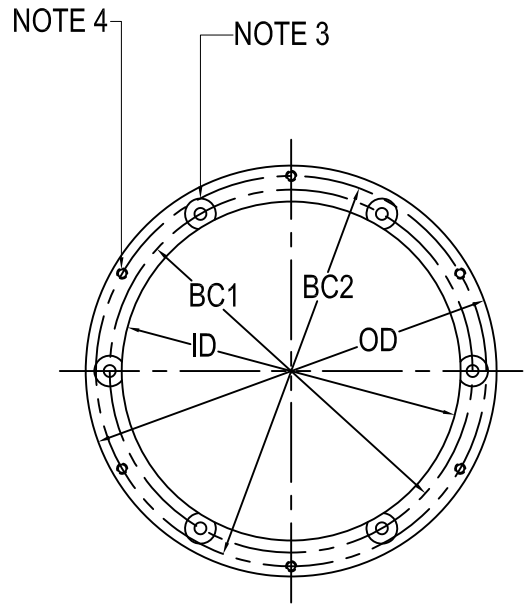


Conversion Ring for converting bolt patterns



Conversion Ring

1. Approved and Certified to FAA Advisory Circular AC150/5345-42 (Current Revision)
Size: B=12", C=15"
2. Conversion Ring galvanized to ASTM-A123/A123M-02
3. (6) 7/16" Ø equally spaced, thru holes with 1 1/8" Ø x 3/8" deep counter bore
4. (6) 3/8"-16 equally spaced, tapped holes
5. Conversion rings are shipped with Bolt Packup #6100:
(6) 3/8"-16 x 1" stainless hex head cap screws (10650198)
(6) 3/8", 2 piece locking washers (10680607)



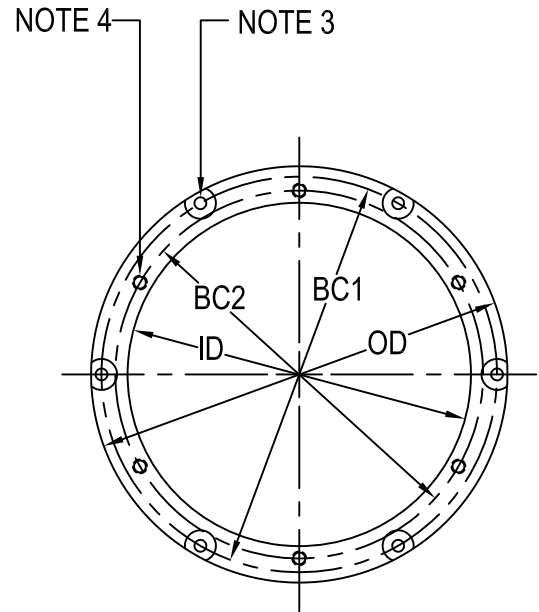
TYPE	OD	ID	BC1	BC2
AA5413	12"	9.25"	10.25"	11.25"
SIZE B	[304.8]	[235]	[260.4]	[285.8]
AA5513	15"	12.375"	13.25"	14.25"
SIZE C	[381]	[314.3]	[336.6]	[362]

[] = dimensions in metrics; mm.

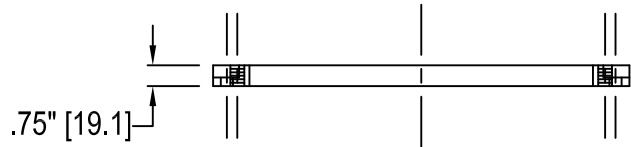
Conversion Ring for converting bolt patterns



Conversion Ring



1. Approved and Certified to FAA Advisory Circular AC150/5345-42 (Current Revision)
Size: B=12", C=15"
2. Conversion Ring galvanized to ASTM-A123/A123M-02
3. (6) 7/16" Ø equally spaced, thru holes with 1 1/8" Ø x 3/8" deep counter bore
4. (6) 3/8"-16 equally spaced, tapped holes
5. Conversion rings are shipped with Bolt Packup #6100:
(6) 3/8"-16 x 1" stainless hex head cap screws (10650198)
(6) 3/8", 2 piece locking washers (10680607)



TYPE	OD	ID	BC1	BC2
AA5423	12"	9.25"	11.25"	10.25"
SIZE B	[304.8]	[235]	[285.8]	[260.4]
AA5523	15"	12.375"	14.25"	13.25"
SIZE C	[381]	[314.3]	[362]	[336.6]

[] = dimensions in metrics; mm.

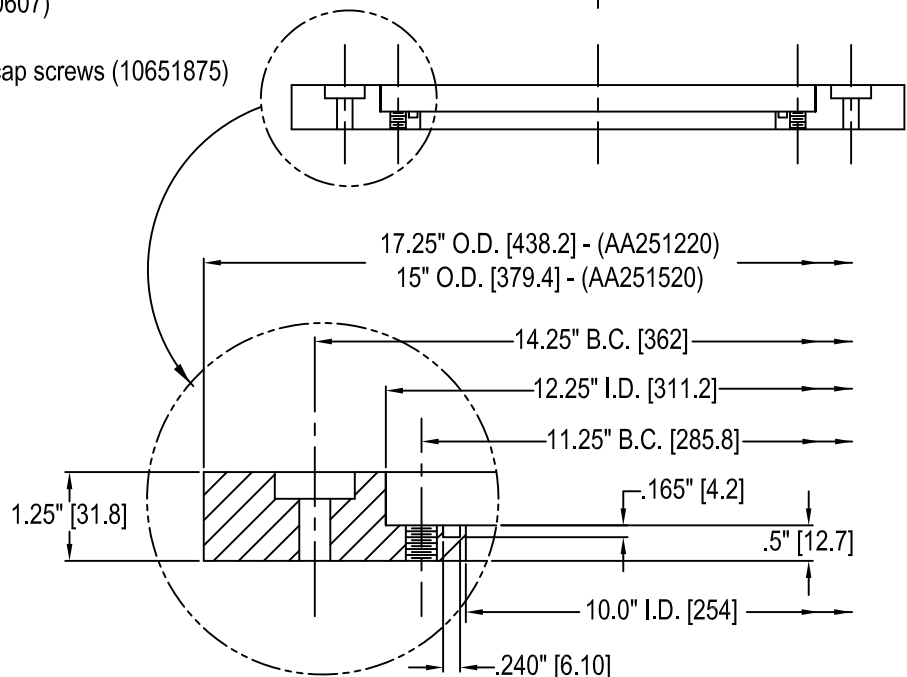
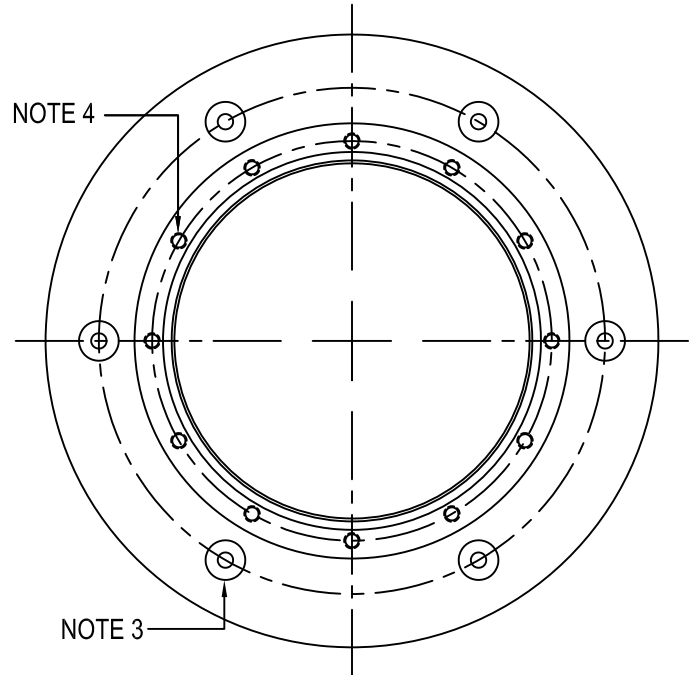
Adapter Plate

14 $\frac{1}{4}$ " B.C. to 11 $\frac{1}{4}$ " B.C.
17 $\frac{1}{4}$ " O.D. - (AA251220)
15" O.D. - (AA251520)



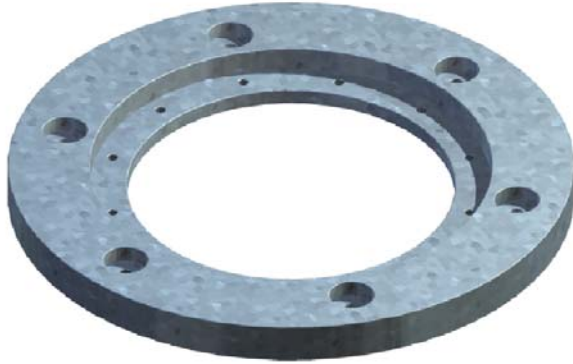
Adapter Plate

1. Approved and Certified to FAA Advisory Circular AC150/5345-42 (Current Revision)
2. Adapter Plates are zinc plated with O. D. wash
3. (6) 7/16" equally spaced, thru holes with 1 1/8" \varnothing x 3/8" deep counter bore
 (2) 1/2"-13 tapped holes 180° apart.
4. (12) 3/8"-16 equally spaced, tapped holes
5. Adapter Plates are shipped with:
 - (1) "O" ring gasket (10530021)
 - Bolt packup #6101 which contains:
 - (6) 3/8"-16 x 1 1/4" stainless hex head cap screws (10650202)
 - (6) 3/8", 2 piece locking washers (10680607)
 - Bolt packup #6114 which contains:
 - (6) 3/8"-16 x 1 1/2" stainless hex head cap screws (10651875)



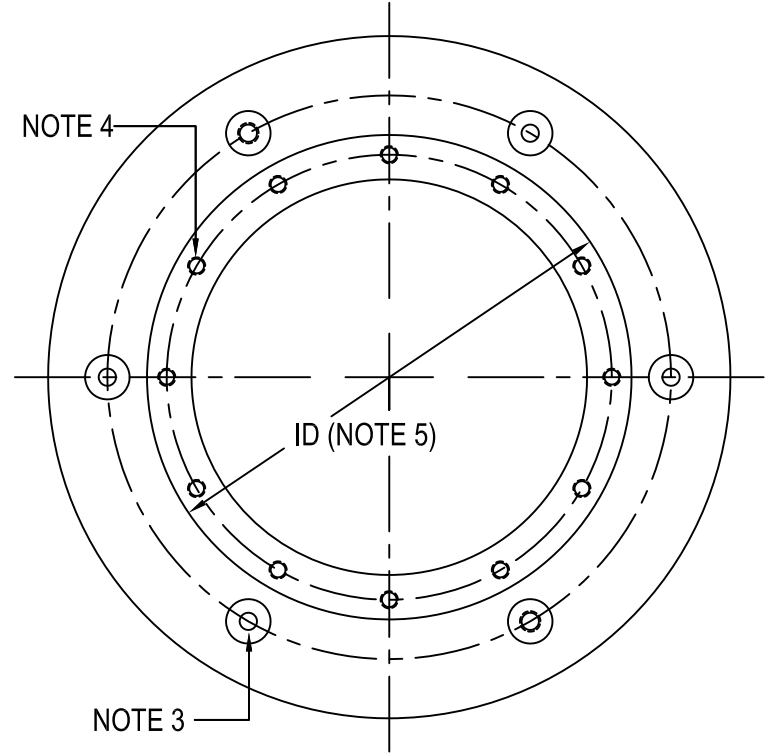
[] = dimensions in metrics; mm.

Adapter Plate Type B - Modified AA251220CDE AA251220EXT

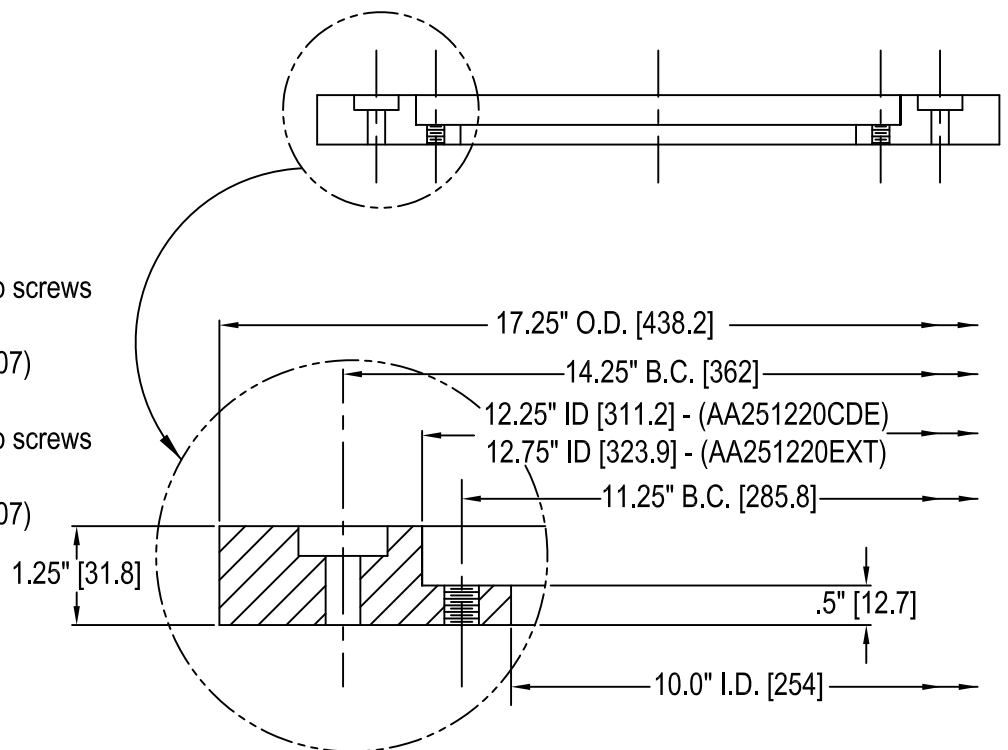


AA2512-20 CDE Adapter Plate

1. Manufactured in accordance to FAA Advisory Circular AC150/5345-42 (Current Revision) and FAA E-1315 specification.
2. Adapter Plates are galvanized to ASTM-A123/A123M-02
3. (6) 7/16" \varnothing equally spaced, thru holes with 1 3/8" \varnothing x 1/2" deep counter bore
(2) 1/2"-13 tapped holes 180° apart.
4. (12) 3/8"-16 equally spaced, tapped holes
5. -CDE has 12 1/4" ID
-EXT has 12 3/4" ID



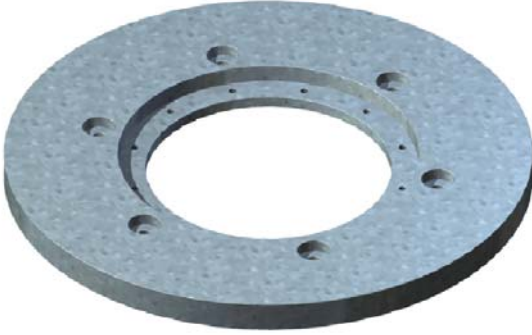
6. Adapter Plates are shipped with:
Bolt packup #6101 which contains:
(6) 3/8"-16 x 1 1/4" stainless hex head cap screws (10650202)
(6) 3/8", 2 piece locking washers (10680607)
Bolt packup #6102 which contains:
(6) 3/8"-16 x 1 1/2" stainless hex head cap screws (10650205)
(6) 3/8", 2 piece locking washers (10680607)



[] = dimensions in metrics; mm.

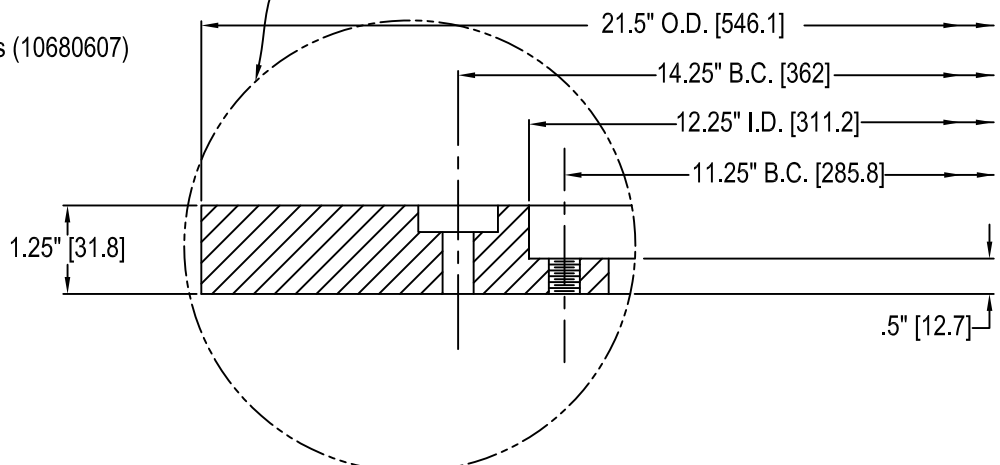
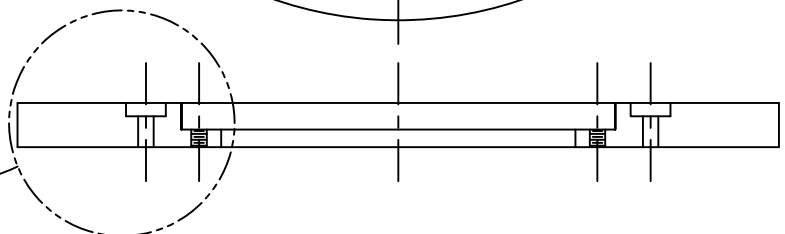
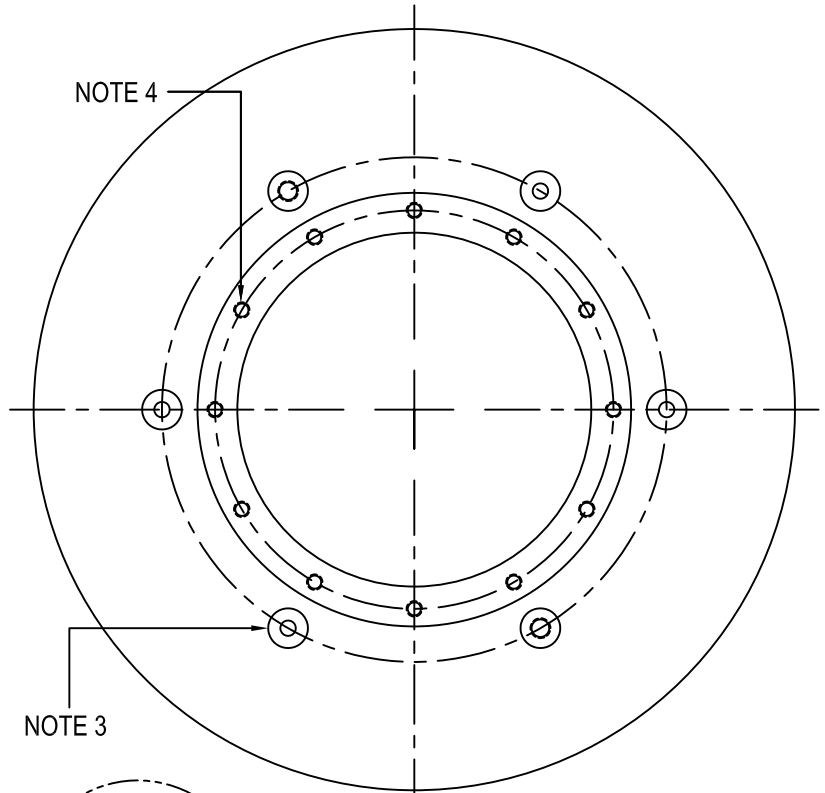
Adapter Plate Type B

Modified for Replacement of FAA E-2491 Light



AA2512-20 CDEX Adapter Plate

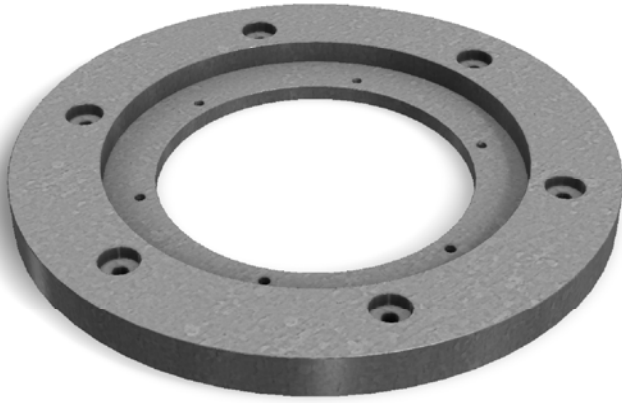
1. Manufactured in accordance to FAA-E-1315A specifications (Modified)
2. Adapter Plates are galvanized to ASTM-A123/A123M-02
3. (4) 9/16" equally spaced, thru holes & (2) 5/8"-11, tapped holes 180° apart with 1 3/8" Ø x 1/2" deep counter bore
4. (12) 3/8"-16 equally spaced, tapped holes
5. Adapter Plates are shipped with:
Bolt packup #6101 which contains:
(6) 3/8"-16 x 1 1/4" stainless hex head cap screws (10650202)
(6) 3/8", 2 piece locking washers (10680607)
Bolt packup #6102 which contains:
(6) 3/8"-16 x 1 1/2" stainless hex head cap screws (10650205)
(6) 3/8", 2 piece locking washers (10680607)
6. Use only with LB4A



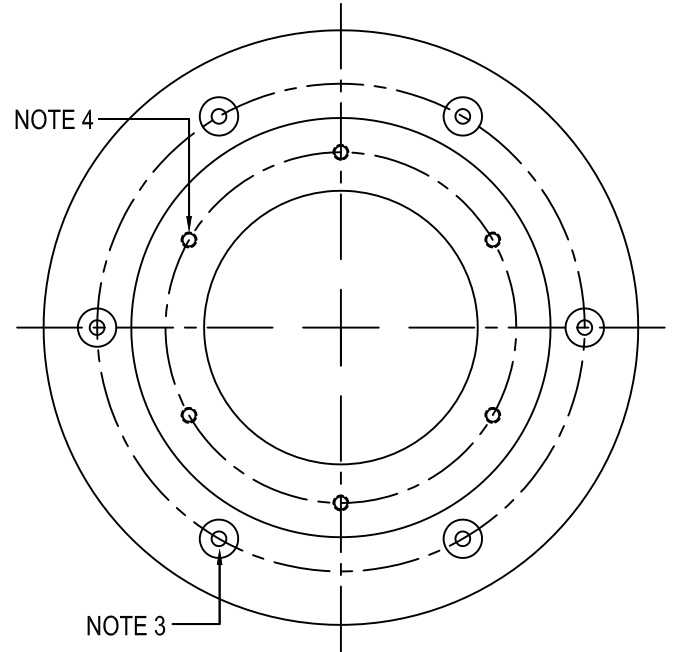
[] = dimensions in metrics; mm.

Adapter Plate

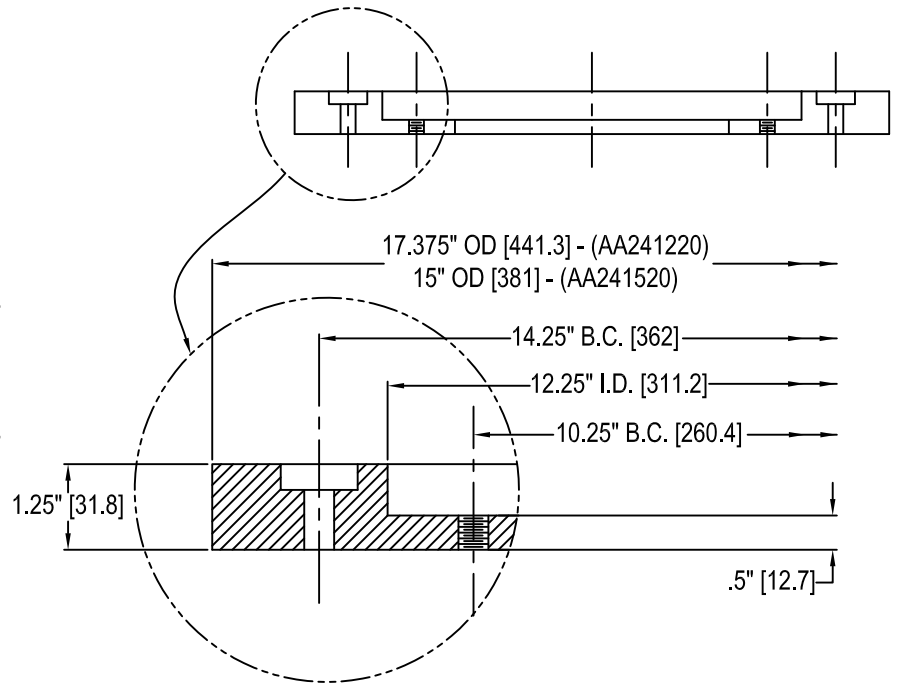
14 1/4" B.C. to 10 1/4" B.C.
17 3/8" O.D. - (AA241220)
15" O.D. - (AA241520)



AA2412-20 Adapter Plate

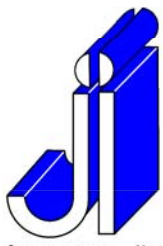


1. Manufactured in accordance to FAA-E-1315A specification
2. Adapter Plates galvanized to ASTM-A123/A123M-02
3. (6) 7/16" Ø equally spaced, thru holes with 1 1/8" x 3/8" deep counter bore
(2) 1/2"-13 tapped holes 180° apart.
4. (6) 3/8"-16 equally spaced, tapped holes
5. Adapter Plates are shipped with:
 Bolt packup #6101 which contains:
 (6) 3/8"-16 x 1 1/4" stainless hex head cap screws (10650202)
 (6) 3/8", 2 piece locking washers (10680607)
 Bolt packup #6102 which contains:
 (6) 3/8"-16 x 1 1/2" stainless hex head cap screws (10650205)
 (6) 3/8", 2 piece locking washers (10680607)



[] = dimensions in metrics; mm.

F-06h (rev 0)



JACQUITH INDUSTRIES INC.



SYRACUSE, NEW YORK - SALES@JACQUITH.COM (315) 478 - 5700 WWW.JACQUITH.COM

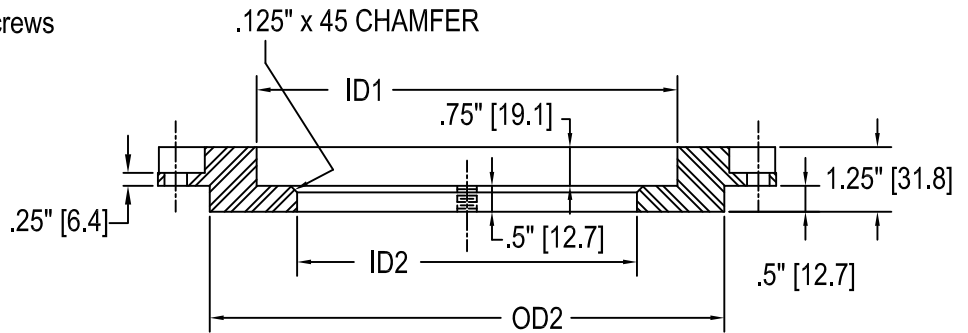
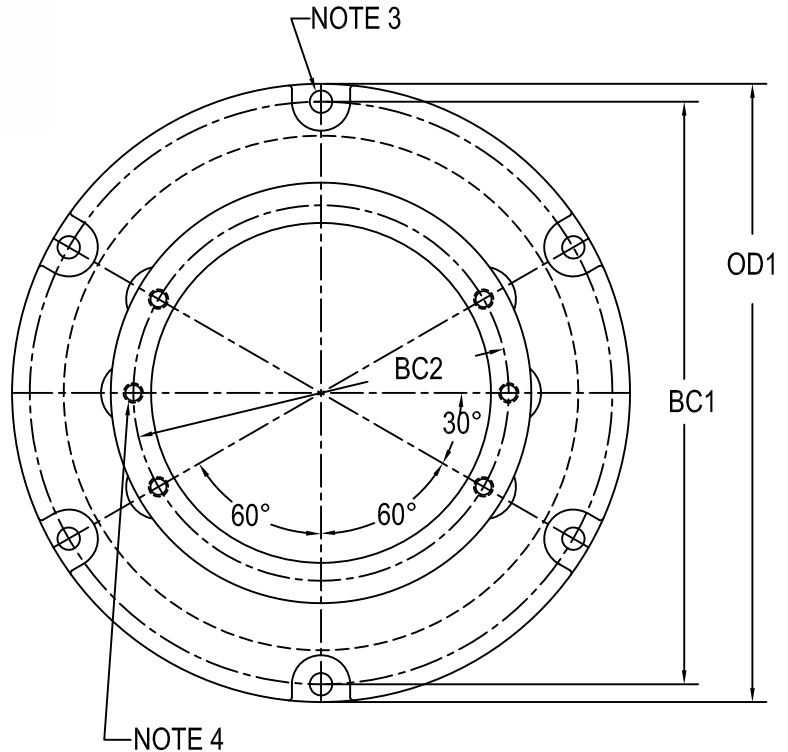
Adapter Plate

For 12" L-868 Base to 8" Inset Light METRIC



AA1228-20 Adapter Plate

1. Approved and Certified to FAA Advisory Circular AC150/5345-42 (Current Revision)
Size: B=12"
2. Material: Ductile Iron Casting
Finish: Powder Coated Black
3. (6) 7/16" Ø equally spaced, thru holes with 1 1/8" Ø x 1/2" deep counter bore
4. (6) M10-1.5 tapped holes
5. Metric Adapter Plates are shipped with:
 - (2) M10x1.5x30mm stainless hex head cap screws (10652820)
 - (2) 2 piece locking washers (10680607)
 - (1) Bolt Set (6100M) containing:
 - (6) M10x1.5x30mm stainless hex head cap screws (10652820)
 - (6) 2 piece locking washers (10680607)



TYPE	OD1	BC1	OD2	ID1	BC2	ID2
AA122820M	11.938"	11.25"	9.938"	8.125"	7.25"	6.563"
12" L868B	[303.2]	[285.8]	[252.4]	[206.4]	[184.2]	[166.7]

[] = dimensions in metrics; mm

F-07.1h (rev 1)

Adapter Plate

For 12" L-868 Base to 8" Inset Light



AA1228-20 Adapter Plate

1. Approved and Certified to FAA Advisory Circular AC150/5345-42 (Current Revision)
Size: B=12"

2. Adapter Plates are galvanized to ASTM-A123/A123M-02

Cast version available -Vega Kote black

3. (6) 7/16" Ø equally spaced, thru holes with 1 1/8" Ø x 1/2" deep counter bore

4. Standard Plate: (6) 3/8"-16 tapped holes

* Metric Plate: (6) M10-1.5 tapped holes

5. Standard Adapter Plates are shipped with:

(2) 3/8"-16 x 1 1/4" stainless hex head cap screws (10650202)

(2) 3/8", 2 piece locking washers (10680607)

(1) Bolt Set (6100) containing:

(6) 3/8"-16 x 1" stainless hex head cap screws (10650198)

(6) 3/8", 2 piece locking washers (10680607)

* Metric Adapter Plates are shipped with:

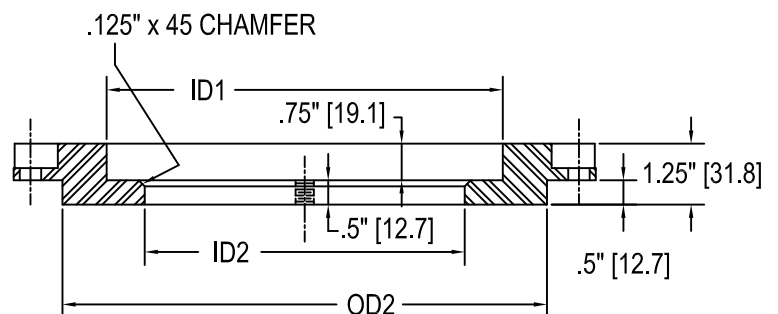
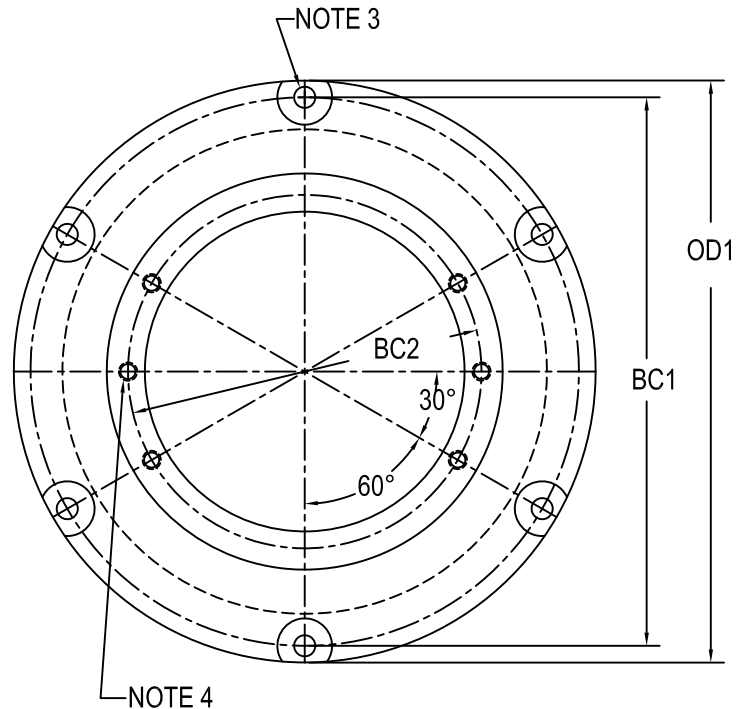
(2) M10x1.5x30mm stainless hex head cap screws (10652820)

(2) 3/8", 2 piece locking washers (10680607)

(1) Bolt Set (6100M) containing:

(6) M10x1.5x30mm stainless hex head cap screws (10652820)

(6) 3/8", 2 piece locking washers (10680607)



Add "M" to the end of the part number to note Metric Adapter Plate*

TYPE	OD1	BC1	OD2	ID1	BC2	ID2
AA122820	11.938"	11.25"	9.938"	8.125"	7.25"	6.563"
12" L868B	[303.2]	[285.8]	[252.4]	[206.4]	[184.2]	[166.7]

[] = dimensions in metrics; mm

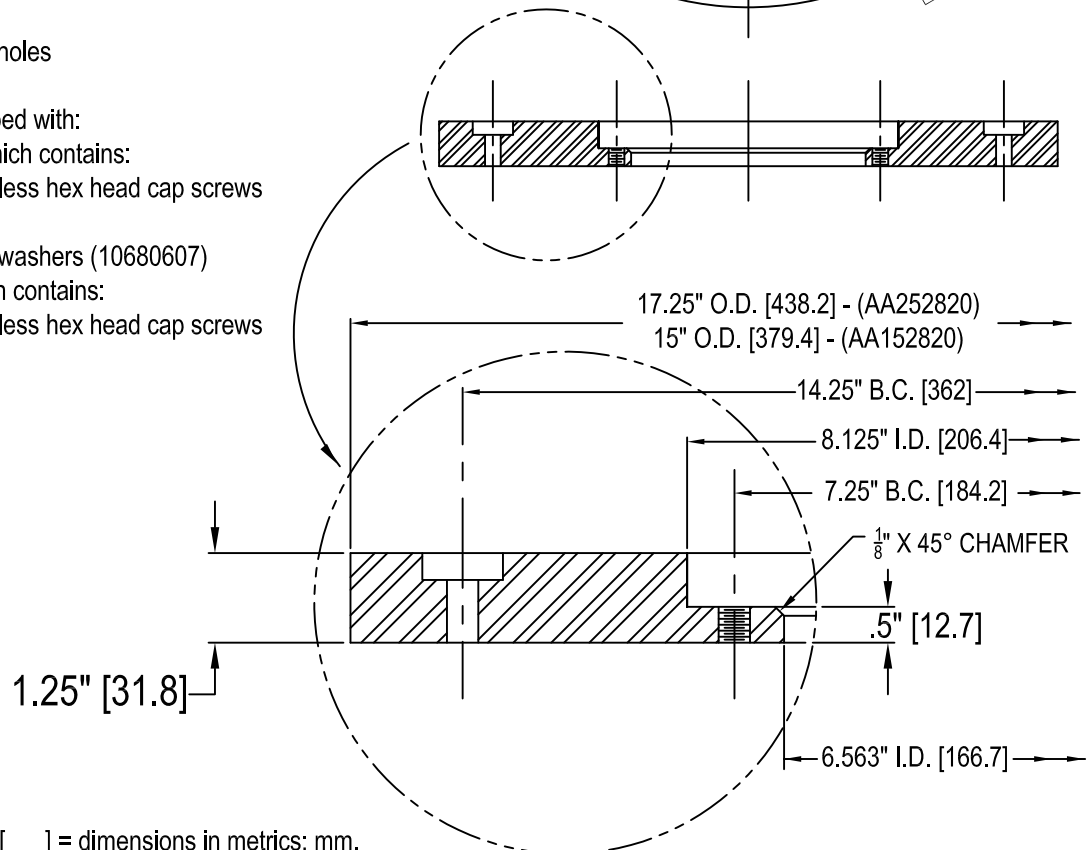
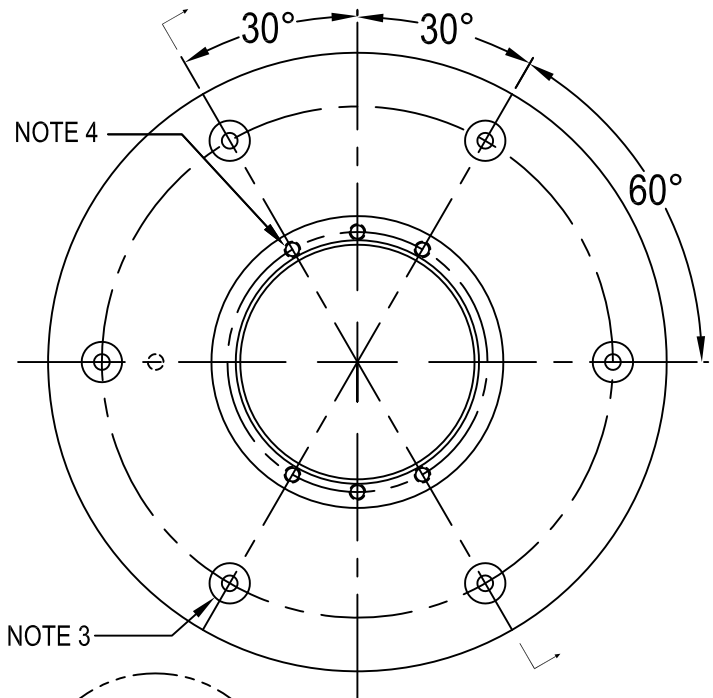
Adapter Plate

14 $\frac{1}{4}$ " B.C. to 7 $\frac{1}{4}$ " B.C.
17 $\frac{1}{4}$ " O.D. - (AA252820)
15" O.D. - (AA152820)

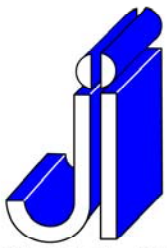


Adapter Plate

1. Approved and Certified to FAA Advisory Circular AC150/5345-42 (Current Revision)
2. Material is structural Grade A36 Hot Rolled Steel
3. Adapter Plates are Hot Dip Galvanized to ASTM-A123/A123M-02
4. (6) 7/16" equally spaced, thru holes with 1 1/8" \varnothing x 3/8" deep counter bore
(2) 1/2"-13 tapped holes 180° apart.
5. (6) 3/8"-16 UNC tapped holes
6. Adapter Plates are shipped with:
 Bolt packup #6102 which contains:
 (6) 3/8"-16 x 1 1/2" stainless hex head cap screws (10650205)
 (6) 3/8", 2 piece locking washers (10680607)
 Bolt packup #6151 which contains:
 (2) 3/8"-16 x 1 1/2" stainless hex head cap screws (10651875)



[] = dimensions in metrics; mm.



SYRACUSE, NEW YORK - SALES@JAQUITH.COM (315) 478 - 5700 WWW.JAQUITH.COM

JAQUITH
INDUSTRIES INC.



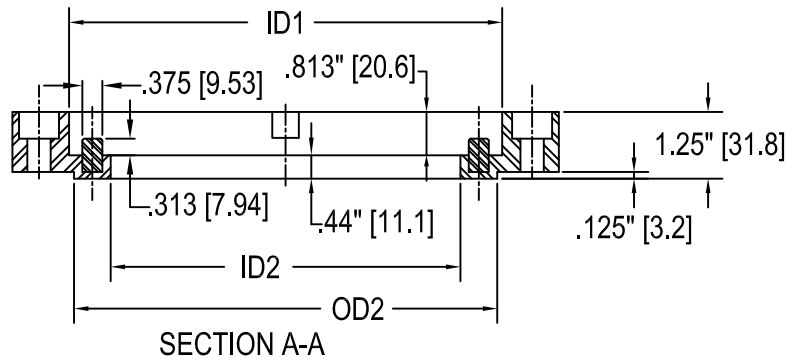
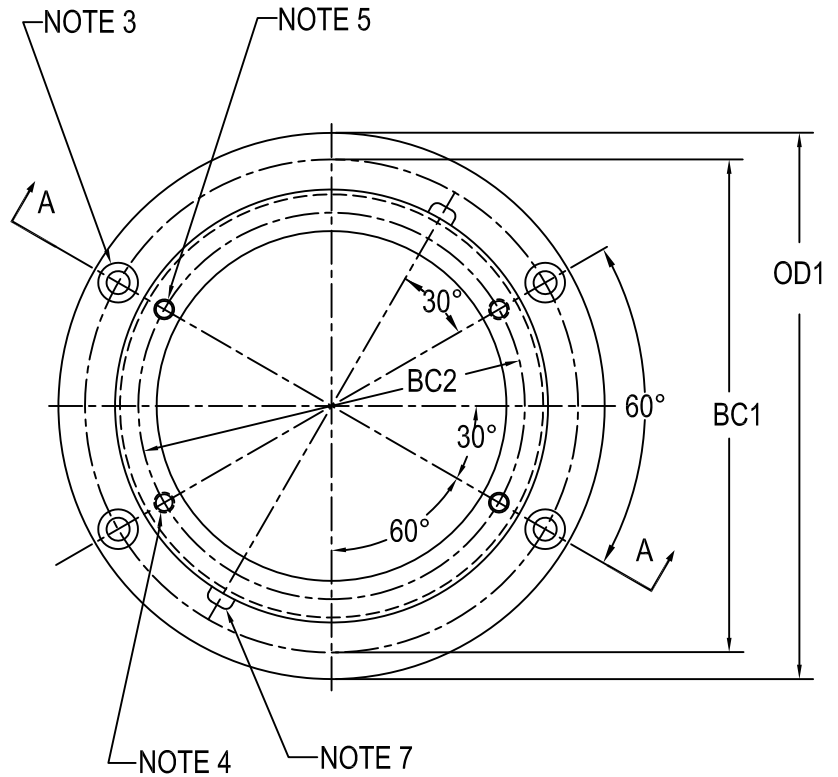
Adapter Plate

For 10" L-868 Base to 8" Inset Light



AAS102820 Adapter Ring

1. Designed to comply with FAA Advisory Circular AC150/5345-42 (Current Revision)
Size: A=10"
2. These Adapter Plates are made from Type 304 Stainless Steel
3. (4) 7/16" Ø thru holes with 3/4" Ø x 1/2" deep counterbores.
4. (2) 3/8"-16 UNC tapped holes located 180° apart (metric threads available)
5. (2) 3/8" dia. x 5/16" Protrusion SS Pins 180° apart
6. (2) machined notches for ease of fixture extraction.
7. These Adapter Plates are shipped with:
 - (2) 3/8"-16 x 1 1/4" stainless hex head cap screws (10650202)
 - (4) 3/8"-16 x 2" stainless hex head cap screws (10672040)
 - (6) 3/8", 2 piece locking washers (10680607)



Add "M" to the end of the part number to note Metric Adapter Plate*

TYPE	OD1	BC1	OD2	ID1	BC2	ID2
AAS102820	10.250"	9.25"	7.938"	8.145"	7.25"	6.540"
10" L868A	[260.3]	[234.9]	[201.6]	[206.9]	[184.2]	[166.1]

[] = dimensions in metrics; mm

F-09h (rev 0)