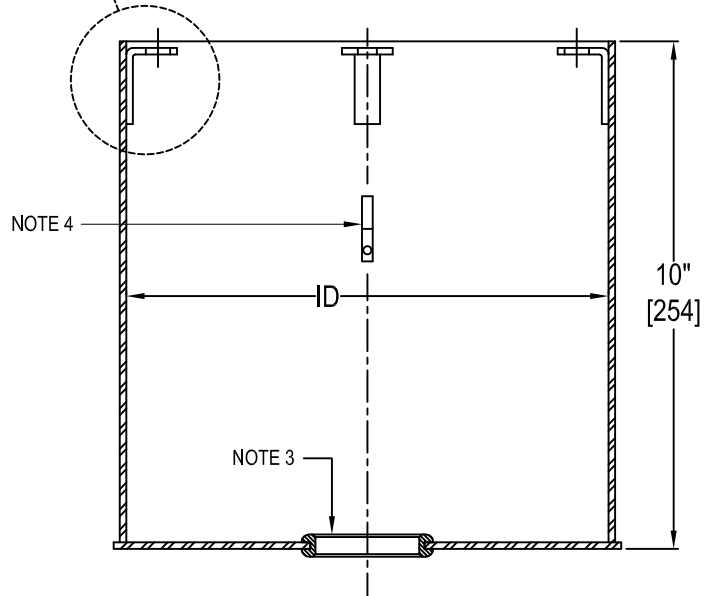
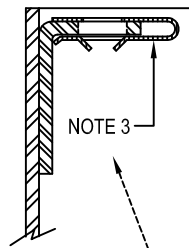
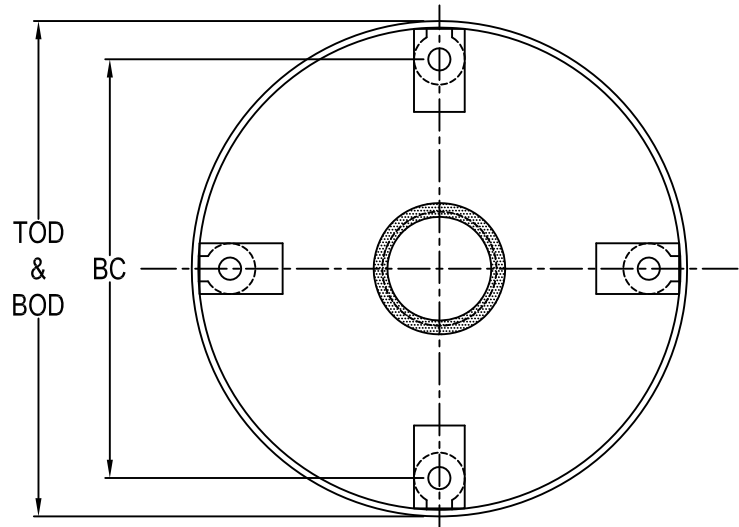


G.A. Style Light Base



G.A. Style Light Base

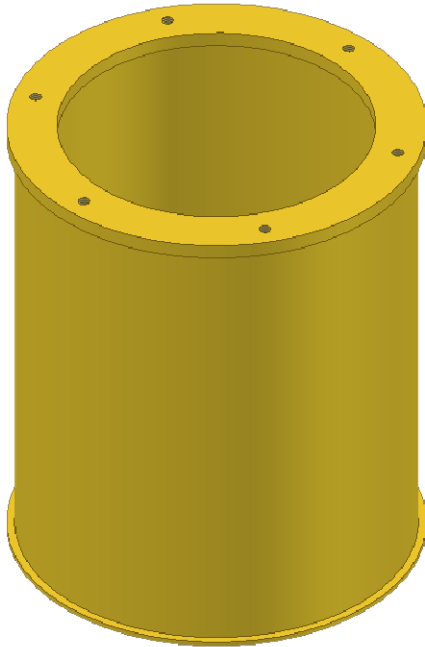


1. Manufactured in accordance to G.A. Guidelines
2. Finish: Yellow Aviation Powder Coat
3. Supplied with:
 - (1) 1 1/2" Solid Flex Connex (10531172)
 - (4) 5/16" Tinnerman Nuts (30680439)
 Flex Connex Grommet is shipped separately
4. Ground Straps are available:
Internal, External, or Both
5. Tops Available:
 - 1) -M = 6133
 - 2) -VA = 6015
 - 3) -LA = 6133 with
 - (2) 2" Flex Connex Grommets @ 0° - 180° plus Internal and External Ground Straps

| TYPE | ID | TOD & BOD | BC |
|---------------|---------|-----------|---------|
| AW9169 | 9.5" | 10" | 8.25" |
| | [241.3] | [254] | [209.6] |

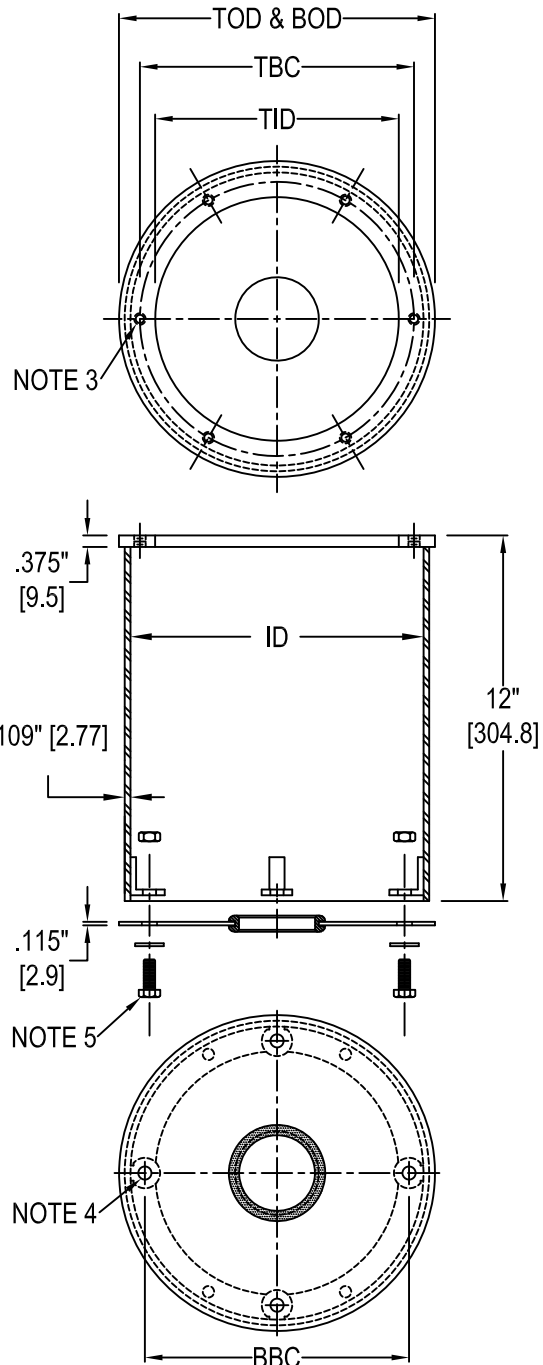
[] = dimensions in metrics; mm

G.A. Style Light Base



G.A. Style Light Base

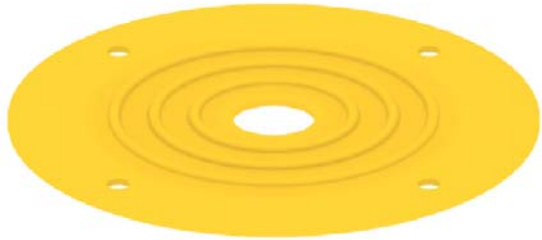
1. Manufactured in accordance G.A. Guidelines
2. Finish: Yellow Aviation Powder Coat
3. (6) 3/8"-16 equally spaced, tapped holes
4. (4) 1/2"Ø equally spaced, thru holes
5. Bottom disc assembled with:
 - (4) 3/8"-16 x 1" stainless hex head cap screws (10650198)
 - (4) 3/8"-16 SS Hex Nuts (10680719)
 - (4) 3/8" Flat Washers (20681034)
6. Shipped with:
 - (1) 2" Solid Flex Connex (10531105)
 - (4) 3/8"-16 x 1" stainless hex head cap screws (10650198)
 - (4) 3/8", 2 piece locking washers (10680607)
 - Flex Connex Grommet are shipped separately
7. Other options: Contact Factory



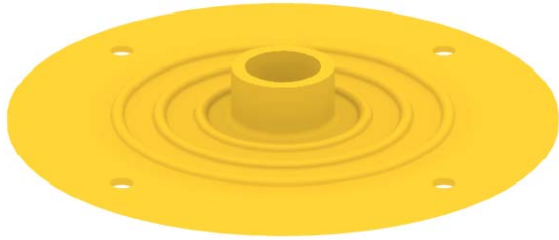
| TYPE | ID | TOD & BOD | TID | TBC | BBC |
|---------------|---------|-----------|--------|-------|---------|
| AW9170 | 9.75" | 10.375" | 7.875" | 9.25" | 8.25" |
| | [247.7] | [263.5] | [200] | [235] | [209.6] |

[] = dimensions in metrics; mm

G.A. Style Base Plate

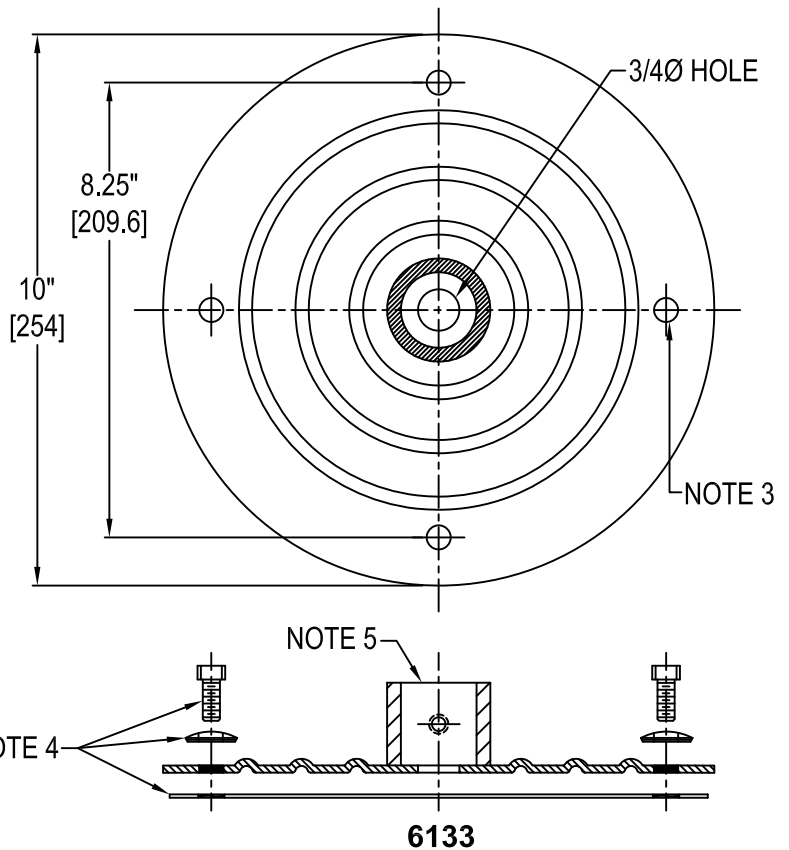
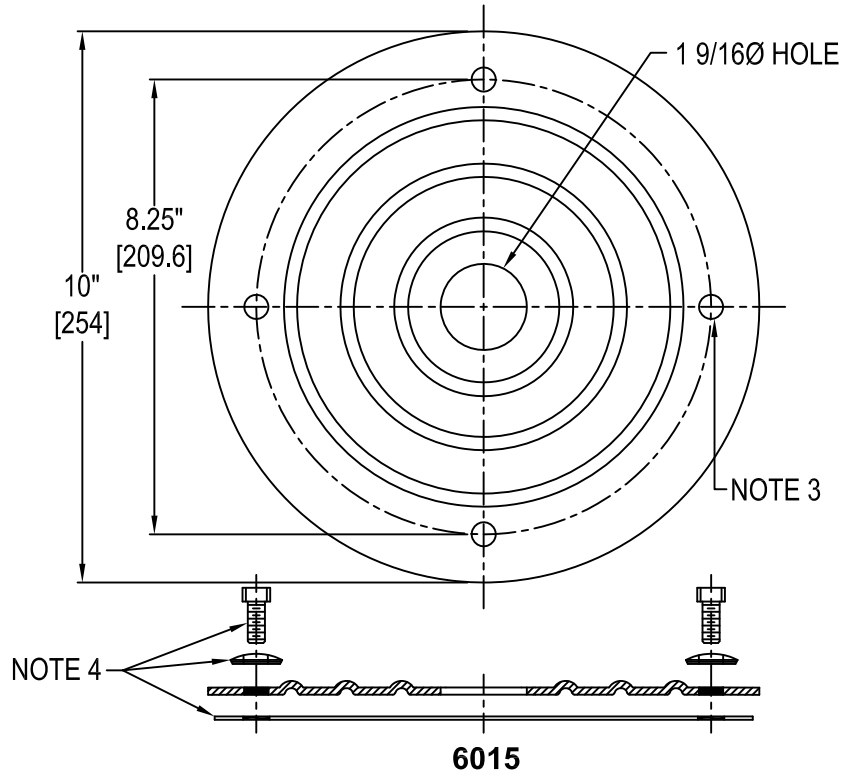


6015



6133

G.A. Style Base Plate



1. Manufactured in accordance to G.A. Guidelines
2. Finish: Yellow Aviation Powder Coat.
3. (4) 7/16" Ø equally spaced, thru holes
4. Supplied with:
 - (1) Poly Gasket (10531594)
 - (4) 5/16"-18 Hex Head Bolts x 3/4" Long (10640193)
 - (4) 5/16" Seal Washers (10681998)
5. Coupling: 1 7/8" OD x 1 3/8" ID (6134)

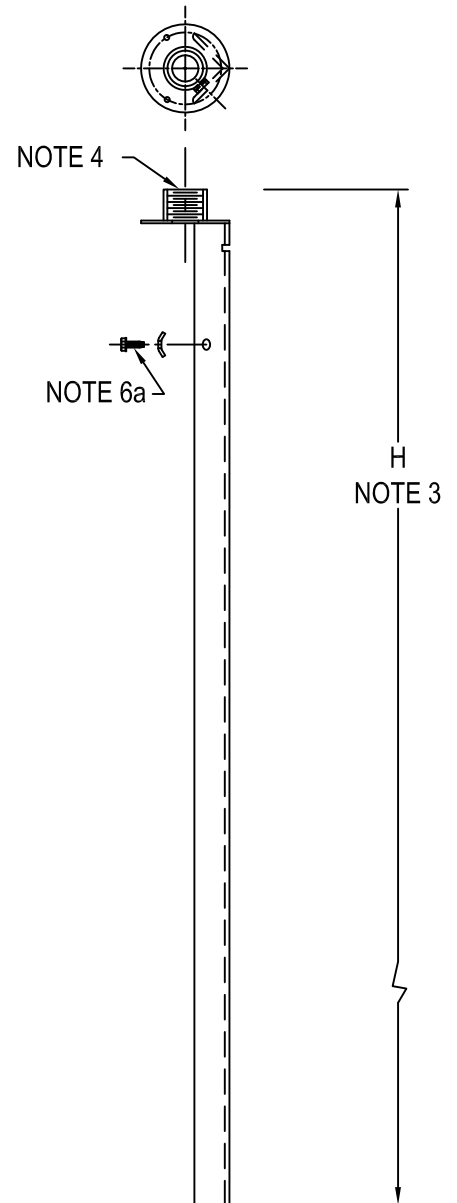
[] = dimensions in metrics; mm.

Mounting Stake L-895

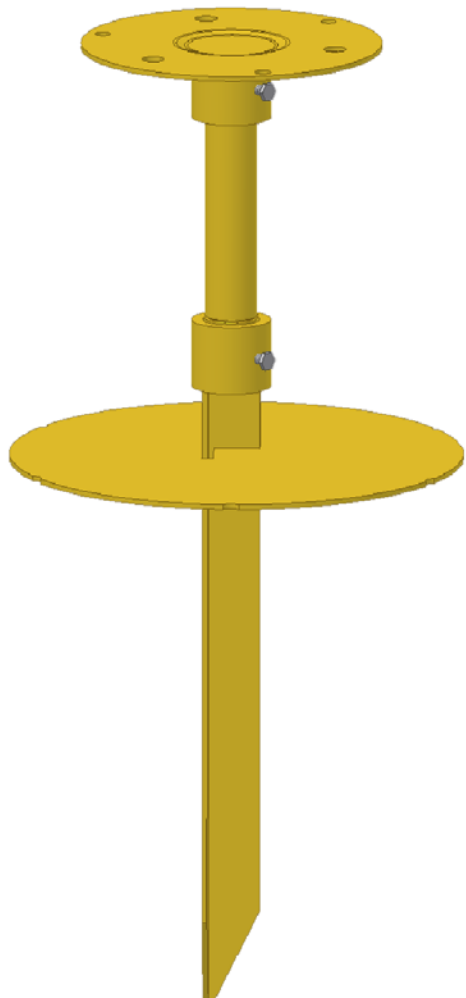


L-895 Mounting Stake (AW2202 shown)

1. Approved and Certified to FAA Advisory Circular AC-150/5345-42 (Current Revision) L895 Class 1
2. Mounting stakes are galvanized to ASTM-A123/A123M-02
3. Stakes are offered in (3) size lengths:
 AW220_30 (30 inch length)
 AW220_36 (36 inch length)
 AW220_60 (60 inch length)
4. Threads are clean and uncoated, thread sizes are designated as such:
 2 = denotes 2"-11½ NPS (e.g. AW2202)
 5 = denotes 1½-12 UNF (e.g. AW2205)
 for 2" BSP threads, use BSG suffix (e.g. AW2202BSG)
5. Ships with:
 Hardware packup (6119) which contains:
 (1) 2 hole cable clamp (8094)
 (2) #10-24 x 1¾" SS machine screws (1066-1012)
6. Optional:
 a. (1) Ground clip AW0923 (see page I-09) with
 (1) 1/4"-20 x 1" self tapping screw (1064-5064)

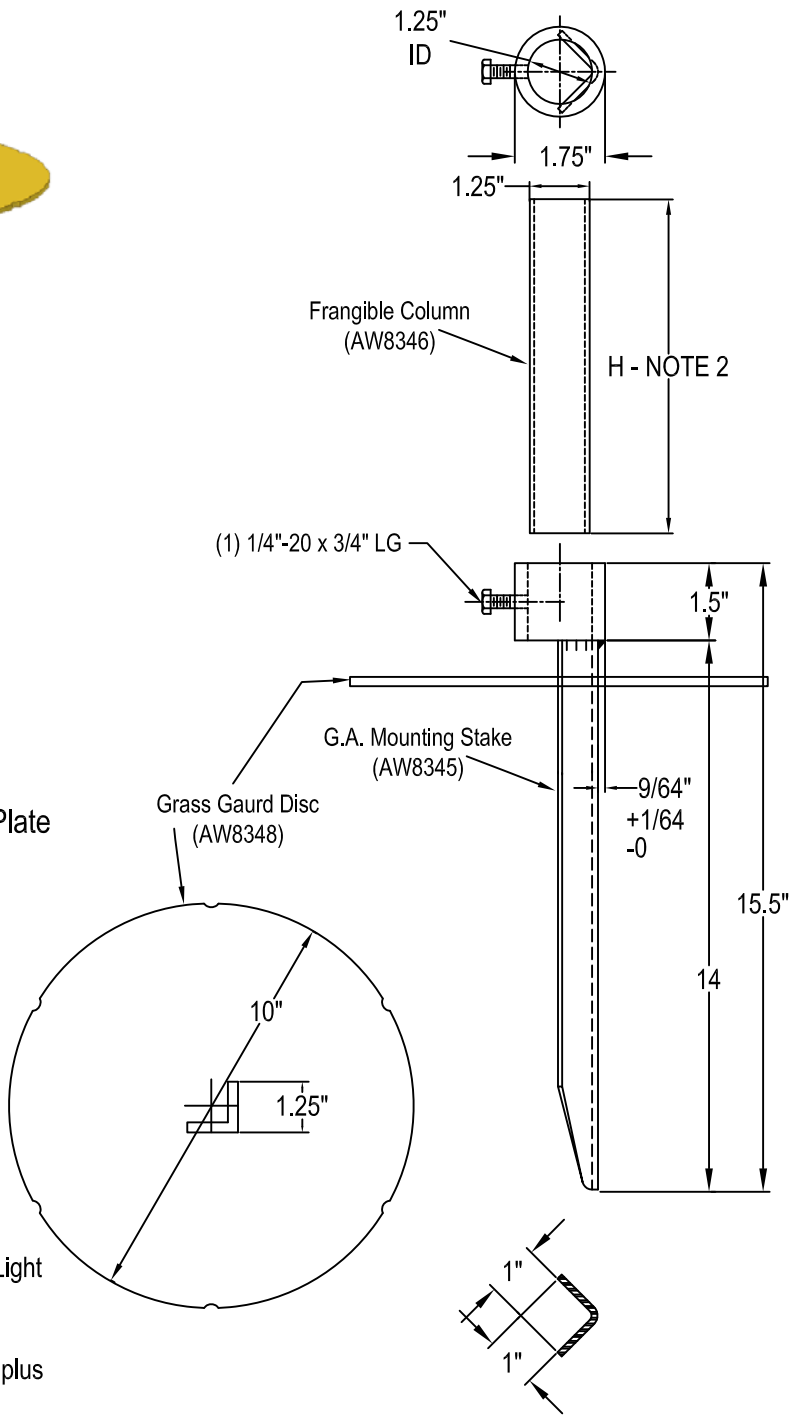


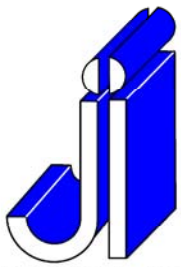
G.A. Mounting Stake & Accessories



AW1601 Ground Stake
 w/ CARMANAH #601 Mounting Plate

1. All Material = A-36 Steel
 Finish: Yellow Powdercoat
2. Frangible Column Height:
 AW8346 = 7" (STANDARD)
 AW8359 = 24" (OPTION)
3. AW1601 Includes the following:
 (1) AW8345 G.A. Mounting Stake
 (1) AW8346 7" Lg Frangible Column
 (1) AW8347 Mounting Plate for #601 Light
4. AW1601GG Includes the following:
 Everything Included with the AW1601 plus
 (1) AW8348 Grass Guard Disc



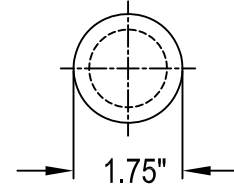


JAQUITH
INDUSTRIES INC.



SYRACUSE, NEW YORK - SALES@JAQUITH.COM (315) 478 - 5700 WWW.JAQUITH.COM

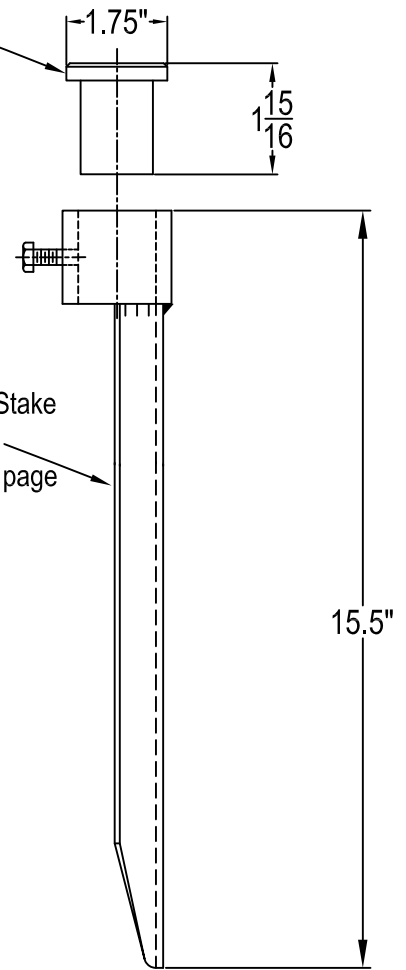
Installation Adapter



AW1699JTP

Installation Adapter
(AW1699JTP)

G.A. Mounting Stake
(AW8345)
For details, see page
G-05f-rev1

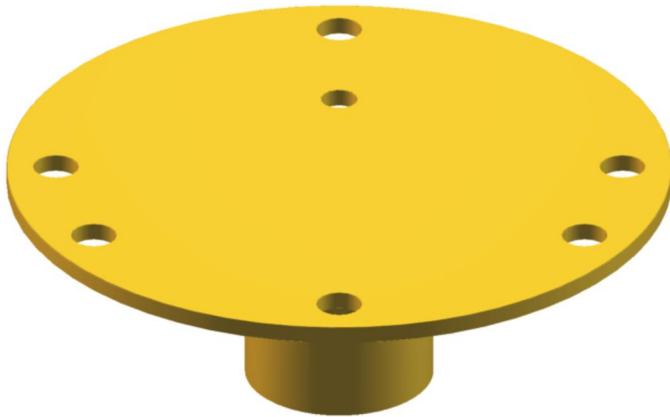


1. The AW1699JTP Installation Adapter prevents damage to stake interface coupling of the AW1601 as it is driven into the ground.

2. The AW1699JTP is reusable

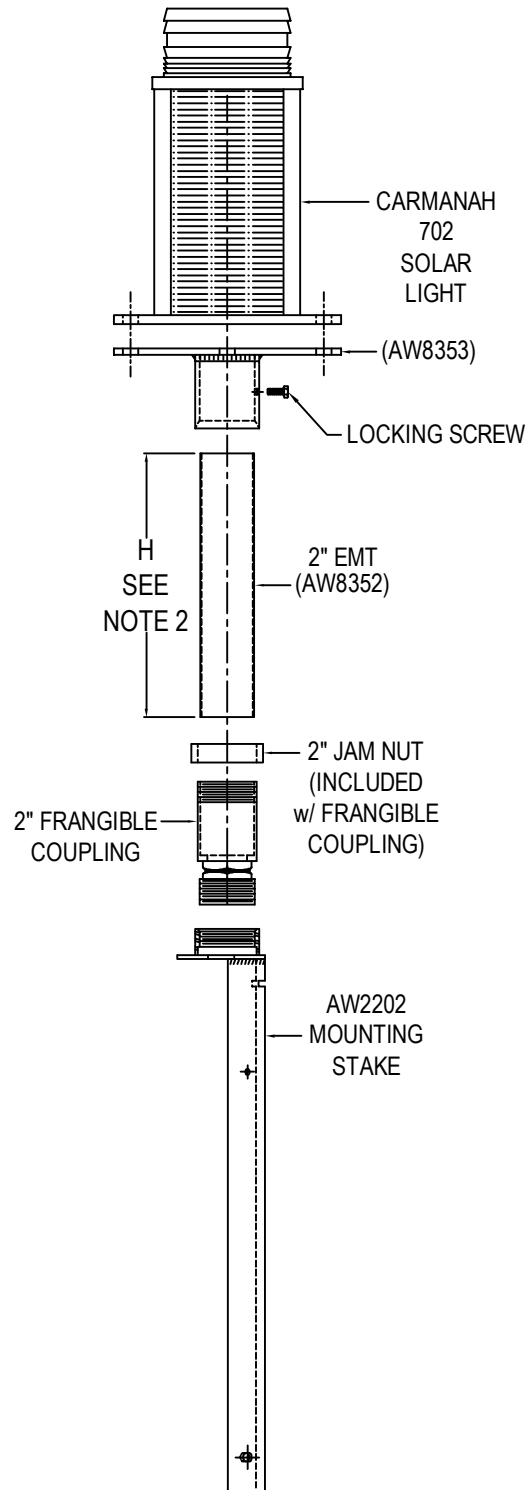
G-06h (rev 0)

Carmanah 702 Mounting System

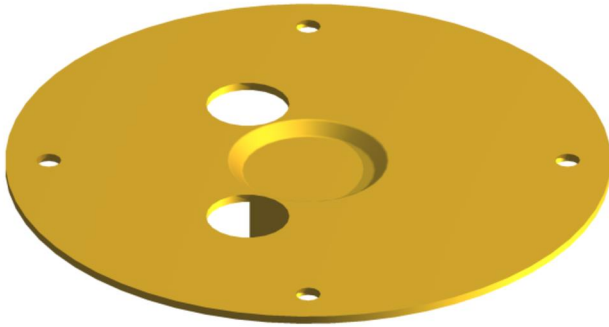


AW8353 - Carmanah 702 Mounting Plate

1. The AW8353 is designed specifically for the Installation of Carmanah's 702 solar light (Other interfaces available)
2. H = Height Required. Standard is 10.75", other heights are available
3. Finish: Yellow Aviation Powder Coat
4. Set-up shown is with attached to a AW2202 (see page G-04h-rev0) but can be attached to various fixtures
5. Hardware to attach light is not included with AW8353



Avlite AV70 Mounting System

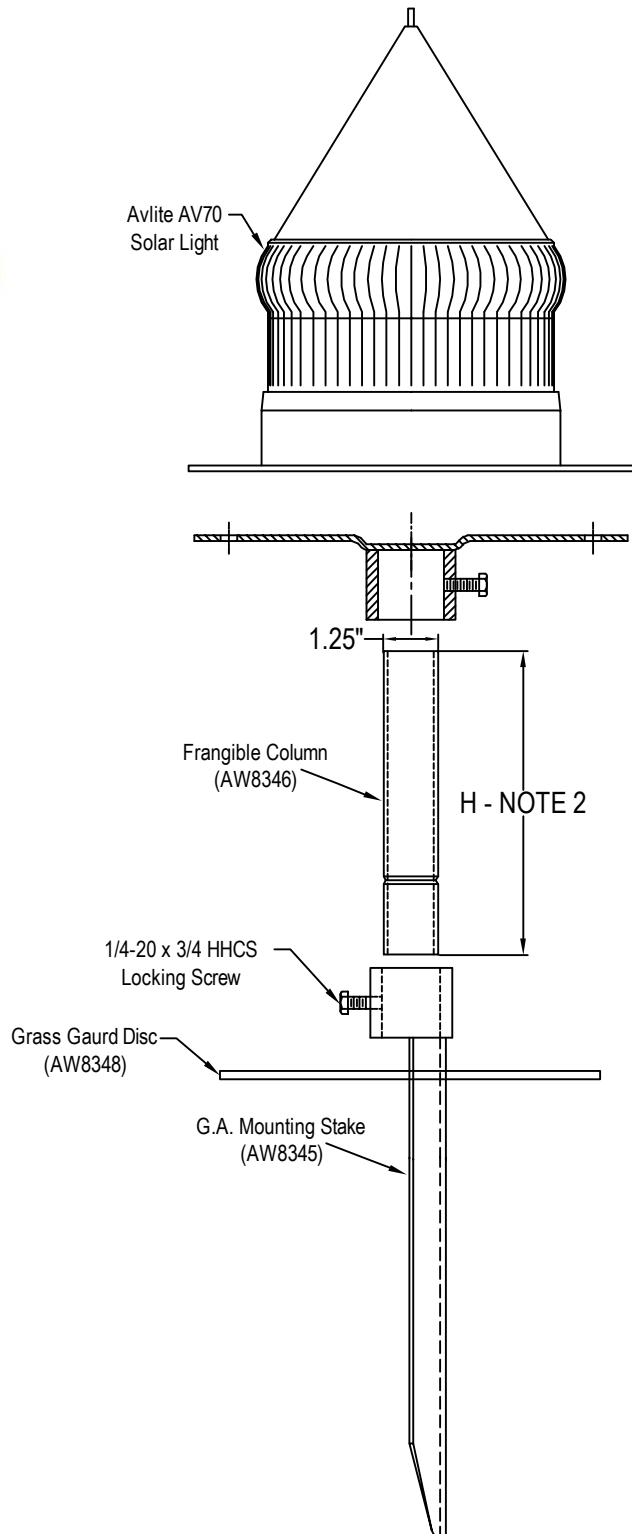


AW8343 - Avlite AV70 Mounting Plate

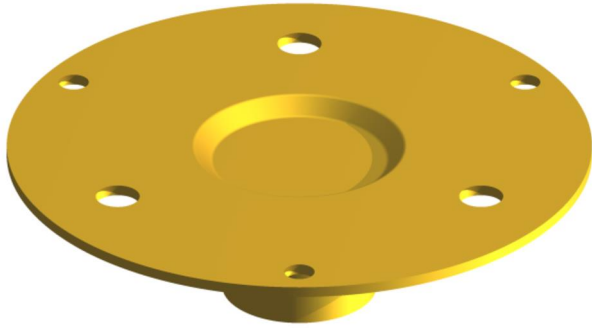
1. The AW8343 is designed specifically for the installation of Avlite's AV70 solar light
 (For other interfaces contact Jaquith Industries)

2. Frangible Column Height:
 AW8346 = 7"
 AW8359 = 24"

3. All Material = A-36 Steel
 Finish: Aviation Yellow Powdercoat

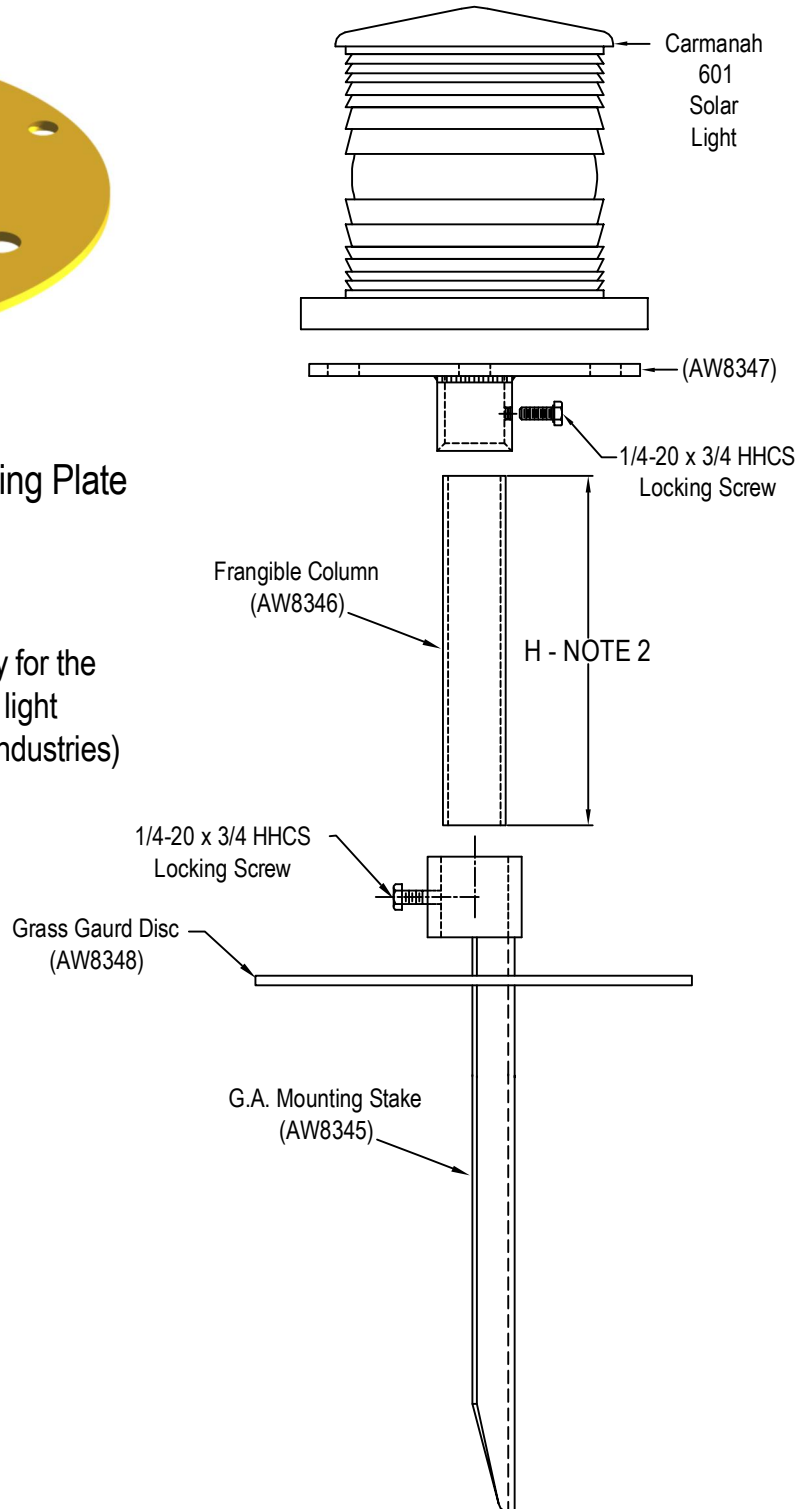


Carmanah 601 Mounting System

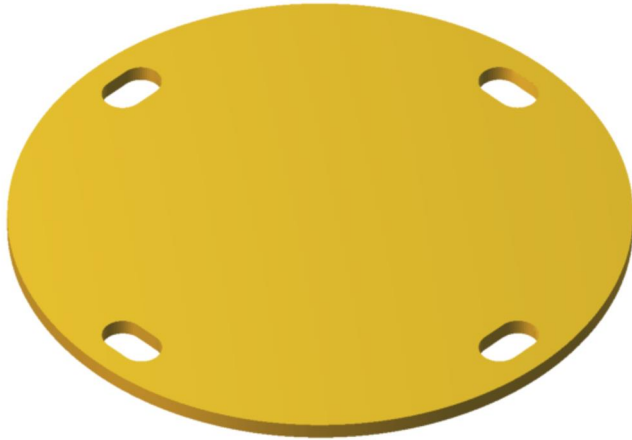


AW8347 - Carmanah 601 Mounting Plate

1. The AW8347 is designed specifically for the installation of Carmanah's 601 solar light
(For other interfaces contact Jaquith Industries)
2. Frangible Column Height:
 AW8346 = 7"
 AW8359 = 24"
3. Material: A-36 Steel
 Finish: Aviation Yellow Powdercoat



Avlite AV310 Mounting System



AW8344 - Avlite AV310 Mounting Plate

1. The AW8344 is designed specifically for the Installation of Avlite's AV310 solar light (Other interfaces available)
2. H = Height Required. Standard is 10.75", other heights are available
3. Finish: Yellow Aviation Powder Coat
4. Set-up shown is with attached to a AW2202 (see page G-04h-rev0) but can be attached to various fixtures
5. Hardware to attach light is not included with AW8344

