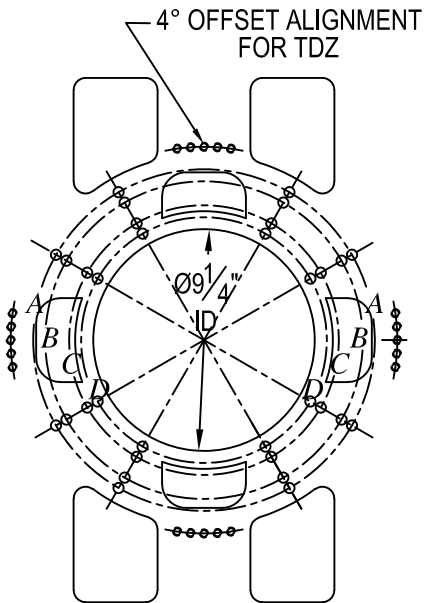
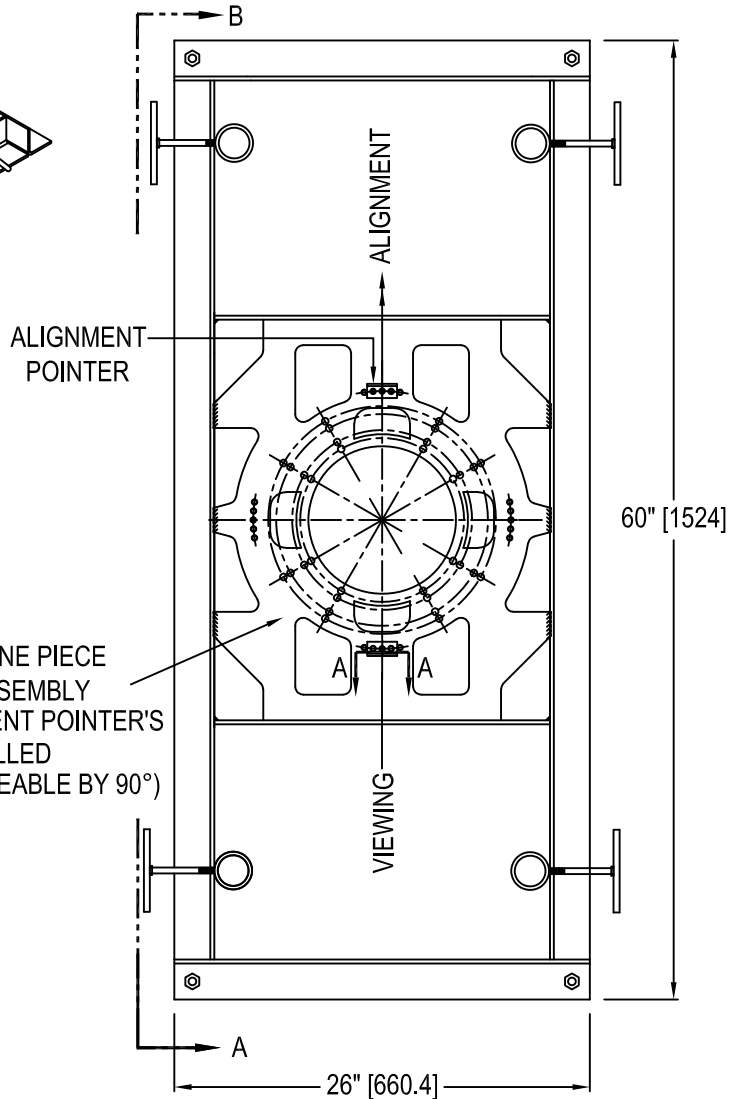
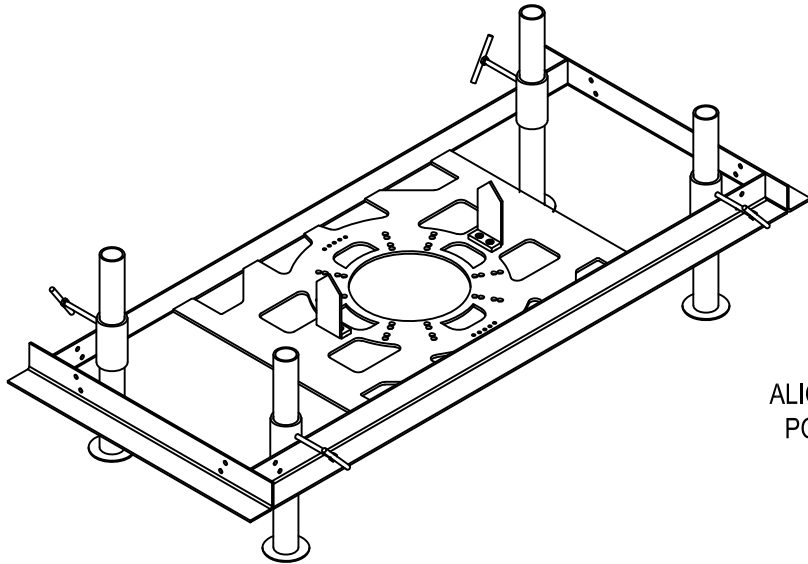
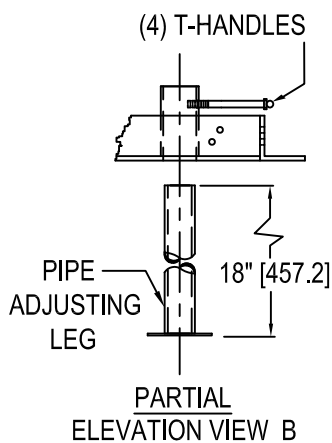
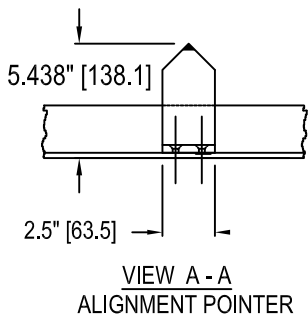


Setting Fixture AW9100A



BOLT PATTERN IDENTIFICATION

NOTE: BULK PACKED IN SEPARATE BOX:
 (2) ALIGNMENT POINTER ASSY'S (8518)
 (4) 1/4-20 X 1/2" LG FLAT HD MACHINE SCREWS (1066-1748)
 (4) PIPE ADJUSTING LEG ASS'Y (8623)
 (4) T-HANDLE ASS'Y (8626)

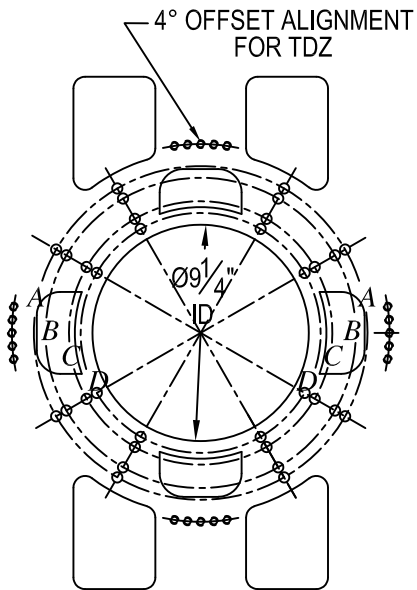
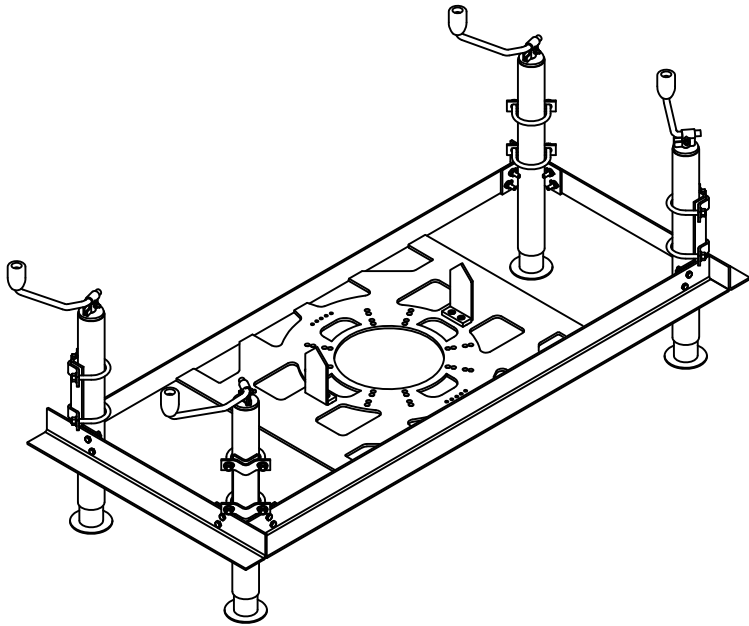


AW9100A

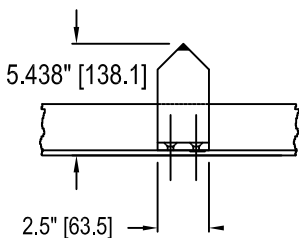
BOLT CENTER	BC	QTY. 7/16" HOLE
A	14.25" [362]	4
B	13.25" [336.6]	4
C	11.25" [285.8]	4
D	10.25" [260.4]	4

[] = dimensions in metrics; mm

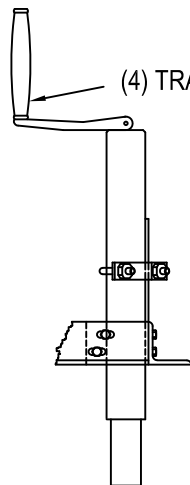
Setting Fixture AW9101A



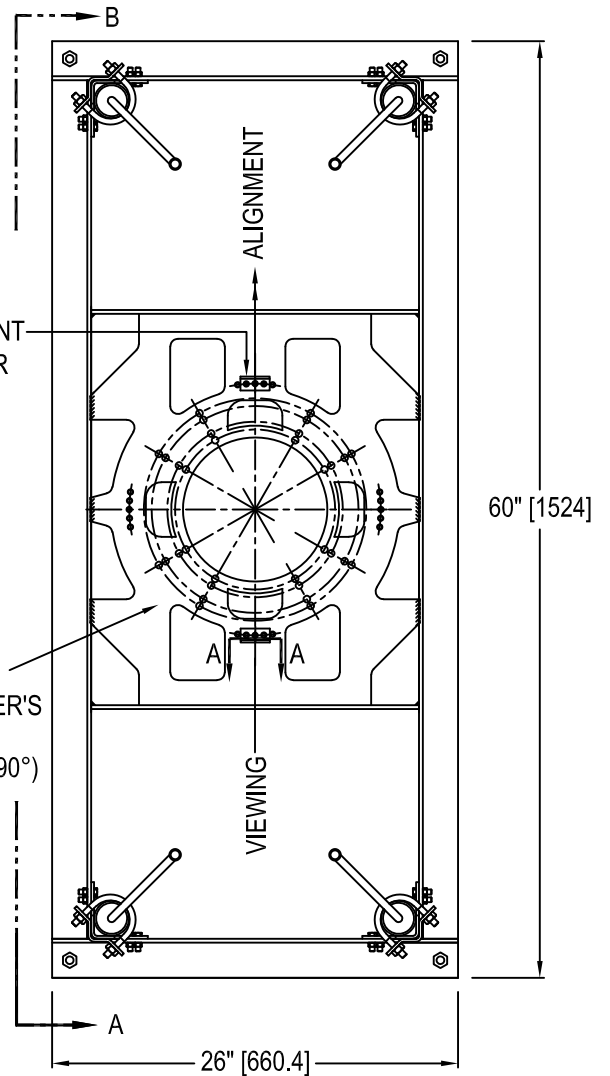
BOLT PATTERN IDENTIFICATION



**VIEW A-A
ALIGNMENT POINTER**



**PARTIAL
ELEVATION VIEW A**

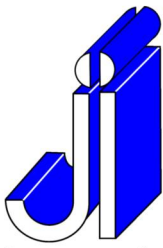


- NOTE: BULK PACKED IN SEPARATE BOX:**
- (2) ALIGNMENT POINTER ASSY'S (8518)
 - (4) JACK BRACKETS (8525)
 - (4) LEVELING JACKS (8524)
 - (8) U-BOLTS (1068-9101) 3/8" WITH NUTS
 - (4) 1/4-20 X 3/4" LG FLAT HD MACHINE SCREWS (1066-1748)
 - (16) 5/16-18 WIZ-LOCK NUTS (1068-1777)
 - (16) HEX HEAD CAP SCREWS 5/16-18x1 1/4" LG YZD (1064-2045)
 - (16) 5/16" YZD FLAT WASHERS (1068-1902)
 - (16) 3/8" YZD FLAT WASHERS (1068-1903)

AW9101A

BOLT CENTER	BC	QTY. 7/16" HOLE
A	14.25" [362]	4
B	13.25" [336.6]	4
C	11.25" [285.8]	4
D	10.25" [260.4]	4

[] = dimensions in metrics; mm



JAQUITH INDUSTRIES INC.



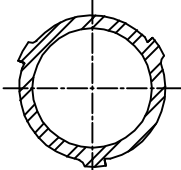
Base Plate Tap for 1-1/2" & 2" tapped base plates

SYRACUSE, NEW YORK - SALES@JAQUITH.COM (315) 478 - 5700 WWW.JAQUITH.COM

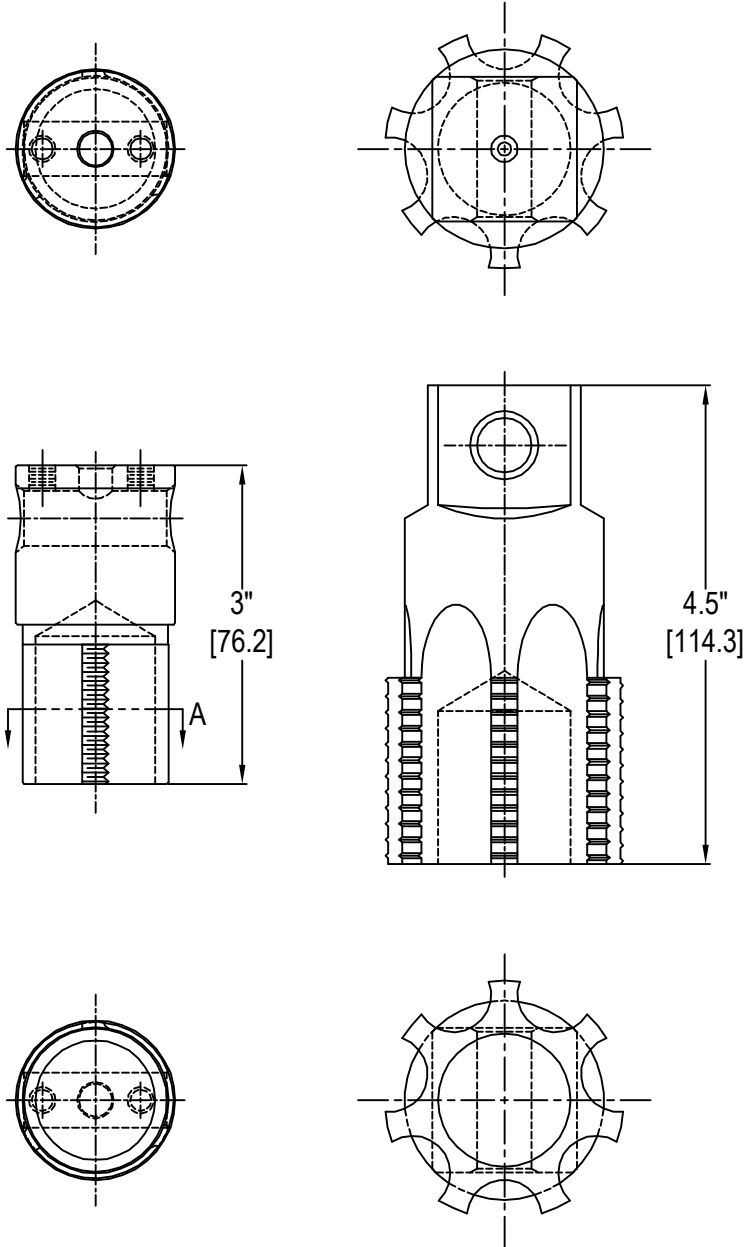


Base Plate Tap AW7015

1. For the restoration of damaged threads in either 1-1/2" and 2" Tapped Base Plates
2. Taps have recess on the bottom that allows for re-tapping without removal of L823 secondary connector
3. Each Tap includes 15" Torque Bar



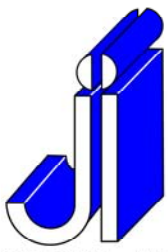
SECTION A-A



AW7015
1-1/2"-12

AW7020
2" NPS

[] = dimensions in metrics; mm



JAQUITH
INDUSTRIES INC.



SYRACUSE, NEW YORK - SALES@JAQUITH.COM (315) 478 - 5700 WWW.JAQUITH.COM

Wrench For Frangible Couplings



Wrench AW7011

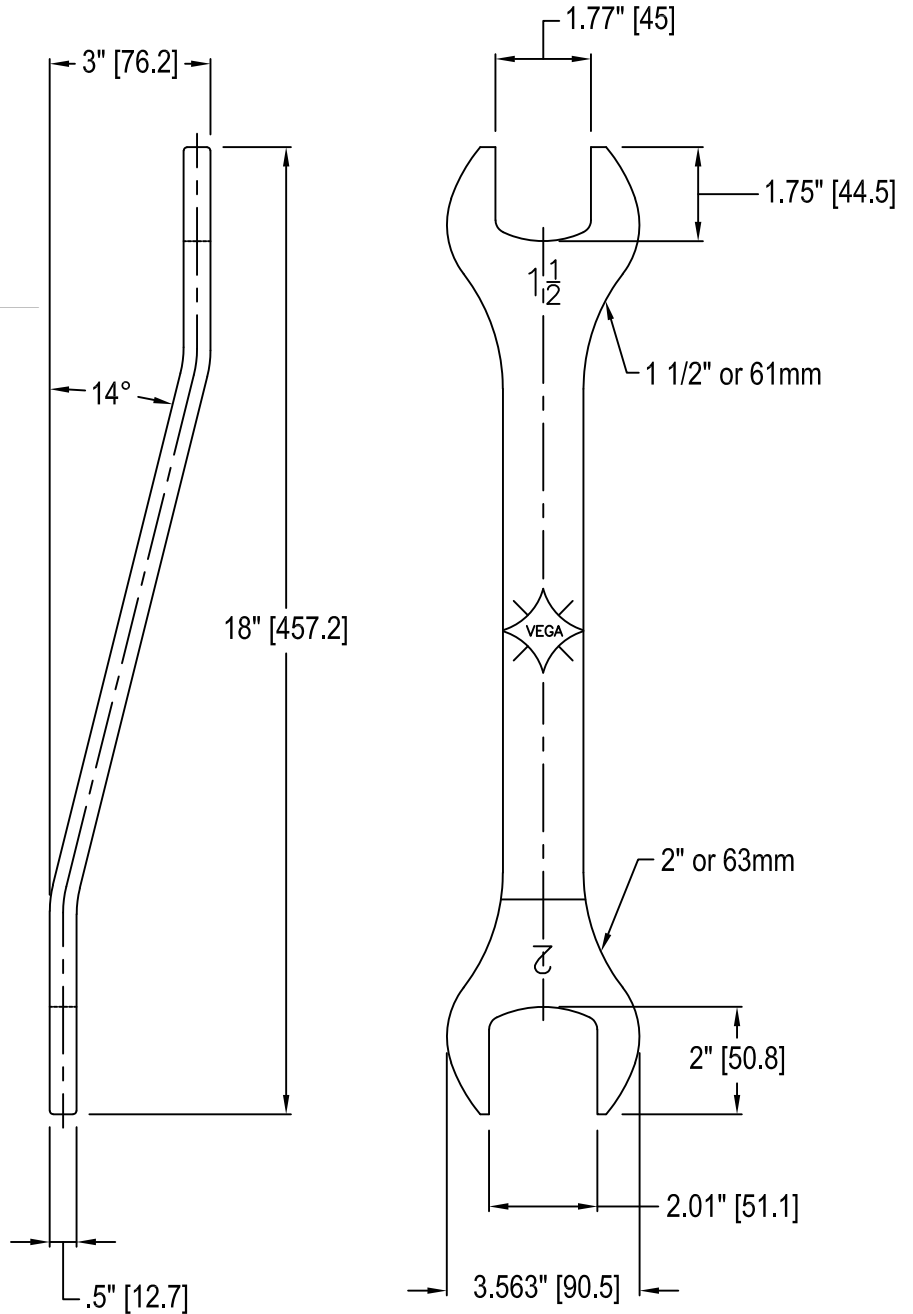
1. Material : 6061-T6 Aluminum
2. Finish : Anodized
3. Weight : Approximately 1-1/2 lbs

AW7010 - METRIC

61 mm & 63 mm

AW7011 - ENGLISH

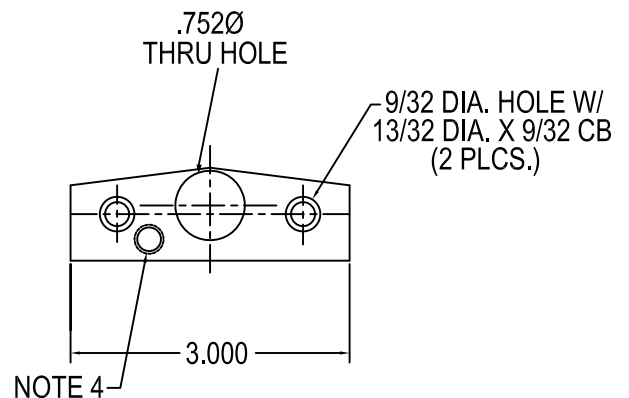
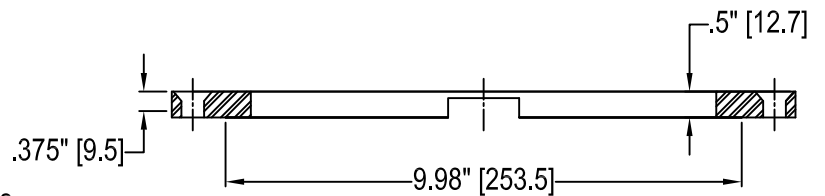
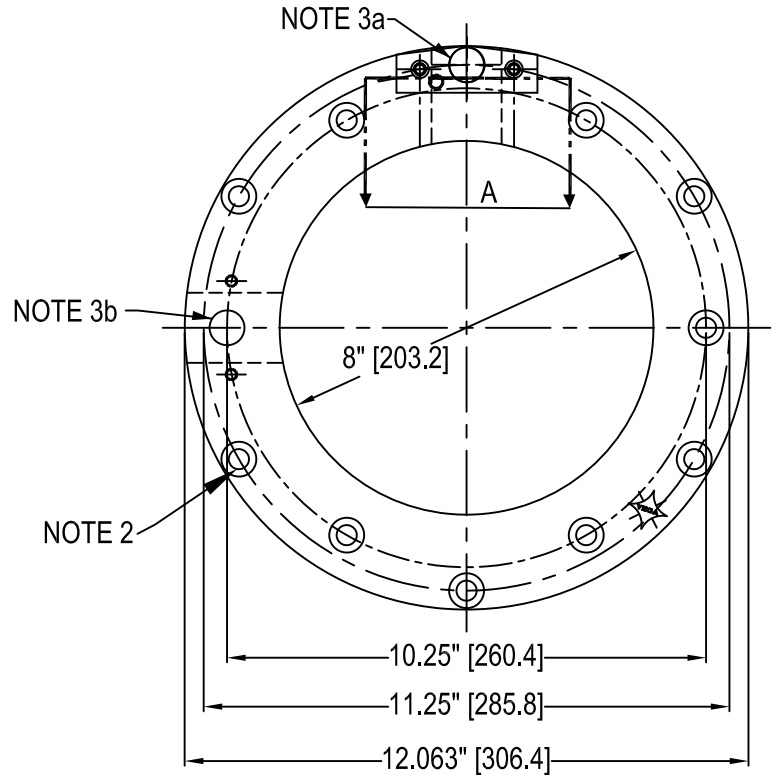
1 1/2" & 2"



Drill Fixture L-867B / L-868B



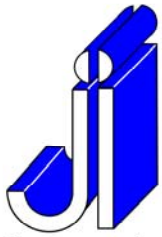
AW7012 KIT



Section View A

1. Drill Plates are zinc plated with O. D. wash
2. (11) 7/16" \varnothing equally spaced, thru holes with 82° counter sink
- 3a. 11.25" BC, (1) 3/4" \varnothing hole for Drill & Tap Bushings
- 3b. 10.25" BC, (1) 3/4" \varnothing hole for Drill & Tap Bushings
4. (1) Bushing Lock Screw (10671000)
5. Fixtures are shipped as a kit with:
 - (1) 5/16" Drill Bushing (10901001)
 - (1) 5/16" H.D. Drill (10901004)
 - (1) 5/32" Drill Bushing (10901002)
 - (1) 5/32" H.D. Drill (10901003)
 - (1) #3 Screw Extractor (10671001)
 - (1) "Z" Drill Bushing (10901000)
 - (1) 3/8"-16 x 6" Extension Tap (10900055)
 - (6) 3/8"-16 x 1" Flat Allen Head Screws (10640059)
 - (1) Carry Bag (10907014)

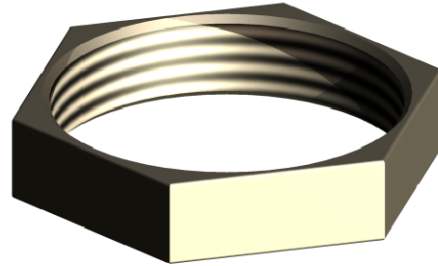
[] = dimensions in metrics; mm.



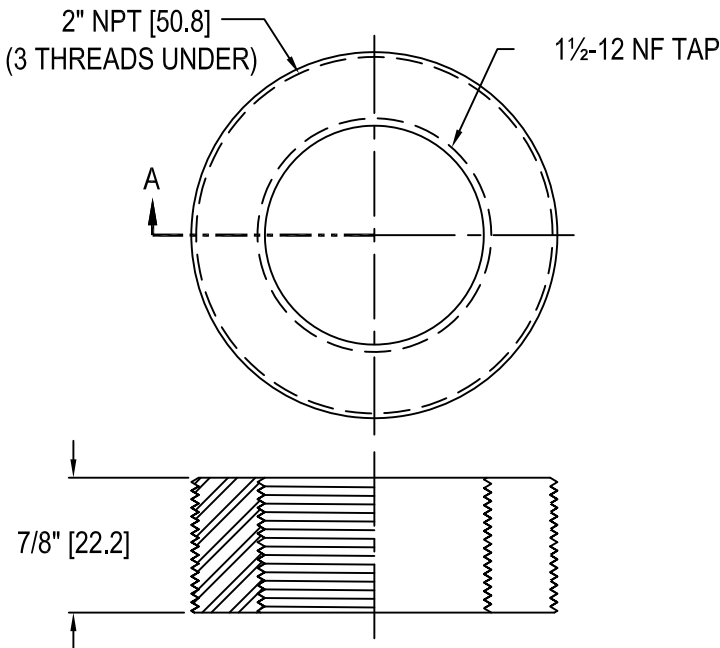
Base Plate Accessories



2" TO 1 1/2" REDUCER



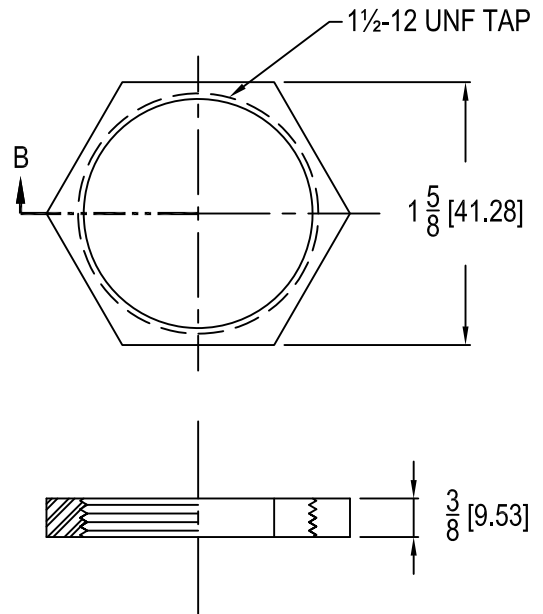
1 1/2" COUPLING LOCK NUT



PARTIAL SECTION A

NOTES :

- 1. Material : Cast iron
- 2. P/N : AW5925
- 3. Zinc Plated



PARTIAL SECTION B

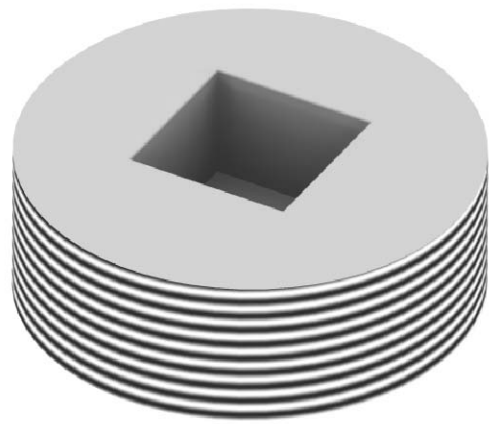
NOTES :

- 1. Material : A36 Steel
- 2. P/N : AW7016
- 3. Zinc Plated

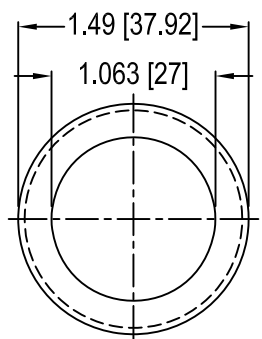
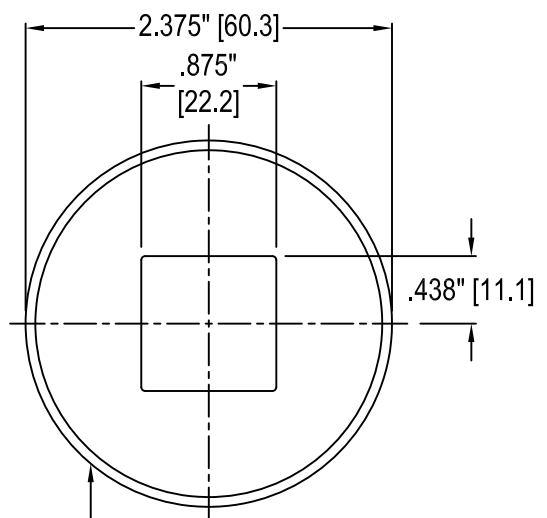
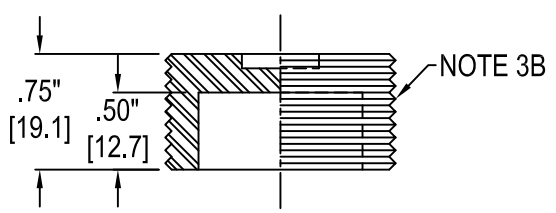
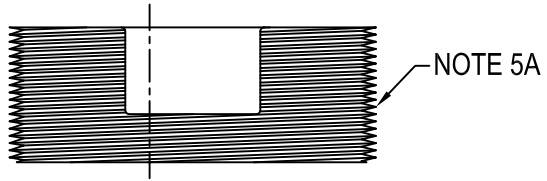
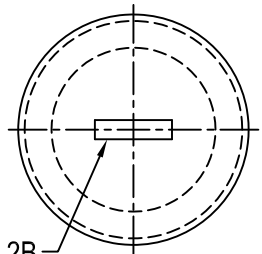
[] = dimensions in metrics; mm

PIPE PLUGS

1½"-12 UNF & 2"-11½ NPT



2" NPT Countersunk Pipe Plug (AW5920)



NOTE 4A

AW5920

AW0317

- 1A. Manufactured in accordance to FAA D-5225 Specifications
- 2A. Material : Cold rolled bar
- 3A. Finish : Zinc plated
- 4A. .063" x 45° chamfer both sides
- 5A. 2" [50.8] NPT tap

- 1B. Material : Aluminum
- 2B. 1/8" x 1/2" x 3/32" deep Screwdriver Slot
- 3B. 1 1/2" [38.1] UNF Tap
- 4B. Recommend using Anti-seize compound when installing

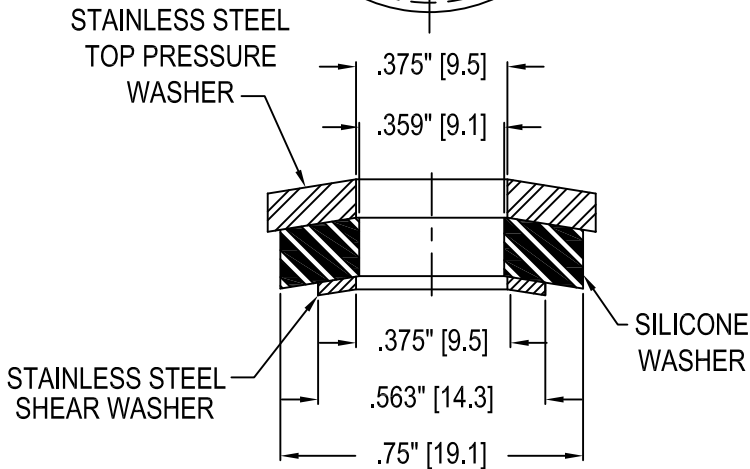
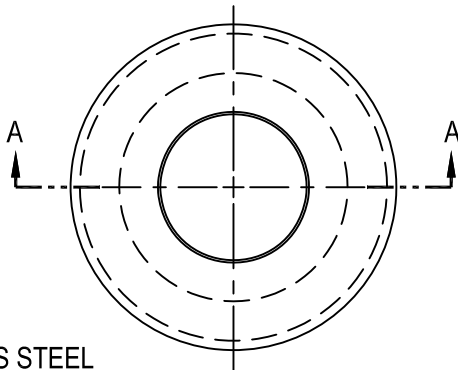
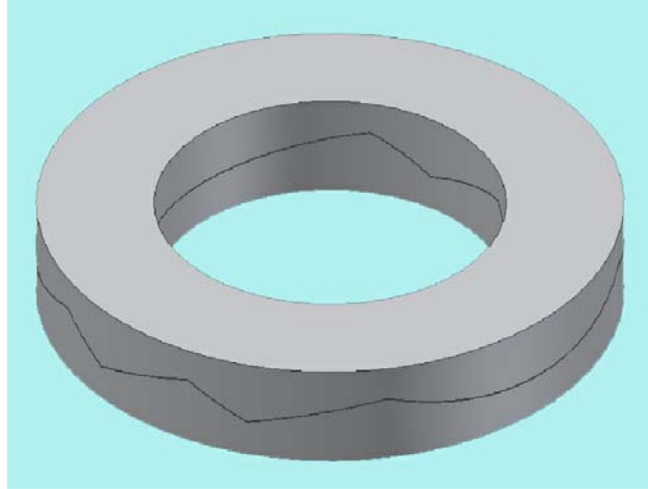
[] = dimensions in metrics; mm.



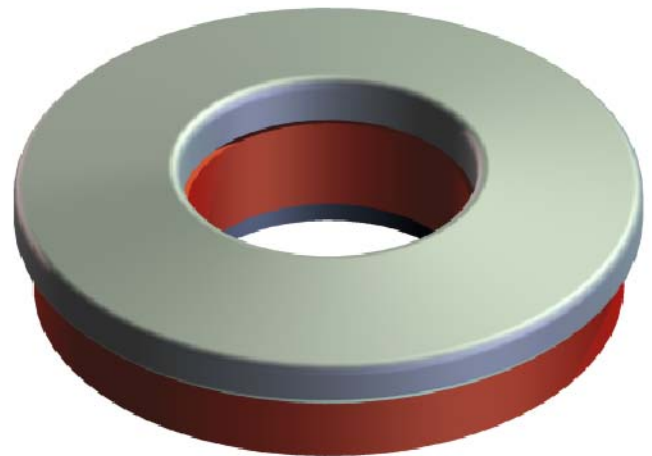
Seal Washer 2 Piece Locking Washer

NORD-LOCK 2 PIECE LOCKING WASHER

10680607



SECTION A - A

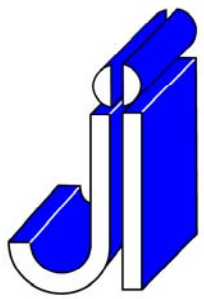


AW0914

SEALWASHER

[] = dimensions in metrics; mm

I-07h (rev 0)

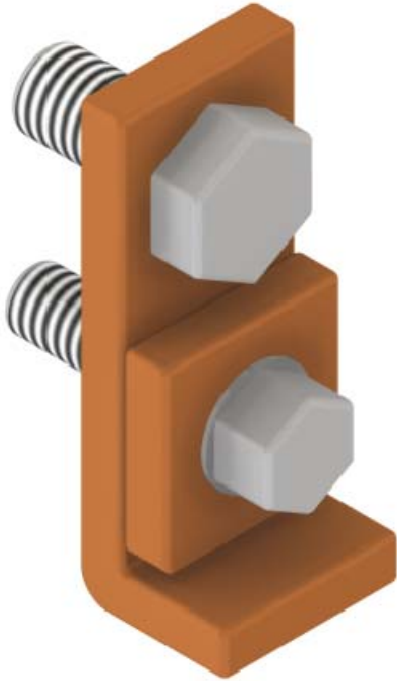


JAQUITH INDUSTRIES INC.

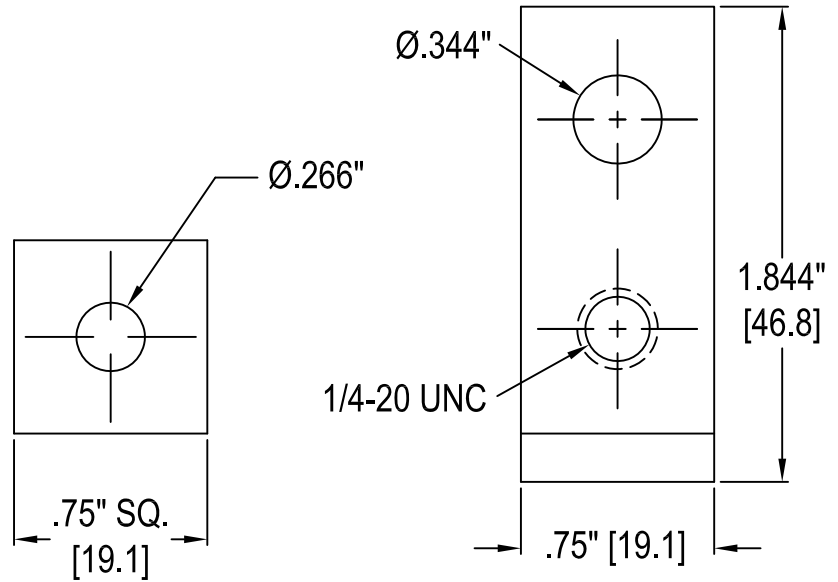


SYRACUSE, NEW YORK - SALES@JAQUITH.COM (315) 478 - 5700 WWW.JAQUITH.COM

Copper Ground Clamp



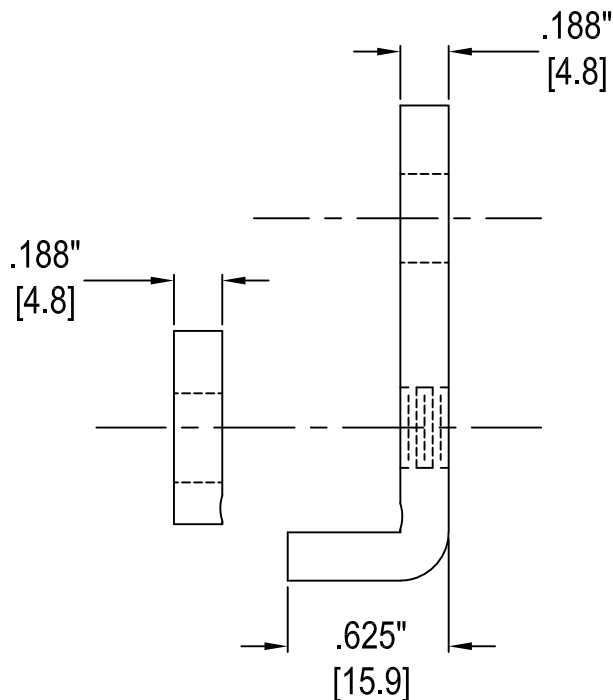
AWS0919 Ground Clamp



Material: Copper

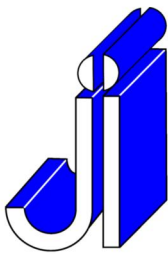
Bolt Packup includes:

- 5/16"-18 x 1/4" SS HHCS (1065-5031)
- 5/16"-18 SS Wiz-Lock Nut (1068-1778)
- 1/4"-20 x 1" SS HHCS (1068-0190)



[] = dimensions in metrics; mm.

I-08h (rev 0)



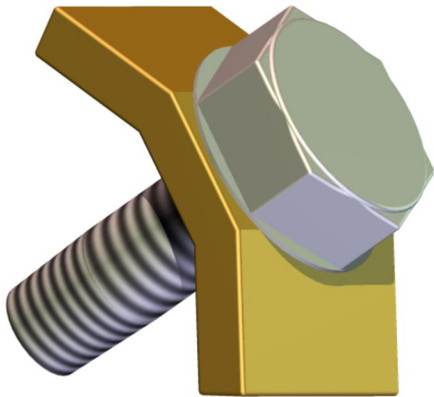
JAQUITH
INDUSTRIES INC.



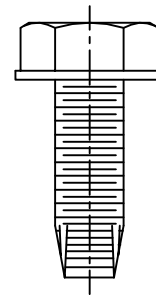
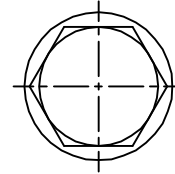
SYRACUSE, NEW YORK - SALES@JAQUITH.COM (315) 478 - 5700 WWW.JAQUITH.COM

Brass Ground Clamp

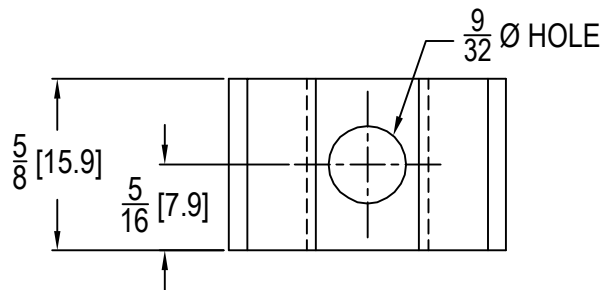
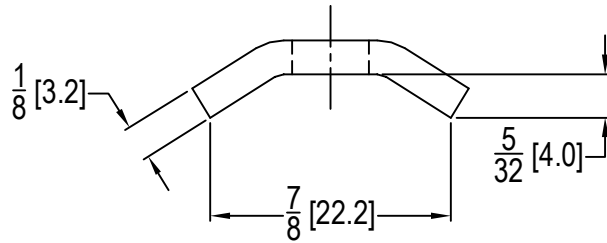
for Mounting Stakes



Brass Ground Clamp AW0923



1/4"-20 x 1"
SELF TAPPING SCREW
(10645064)



AW0923
Mat'l. : BRASS

I-09h (rev 0)