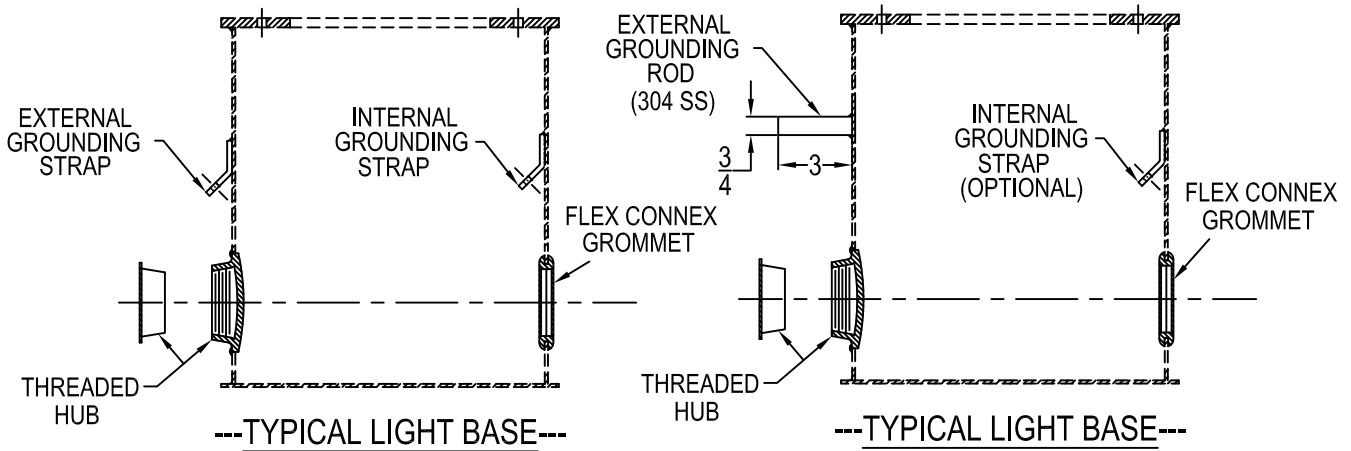


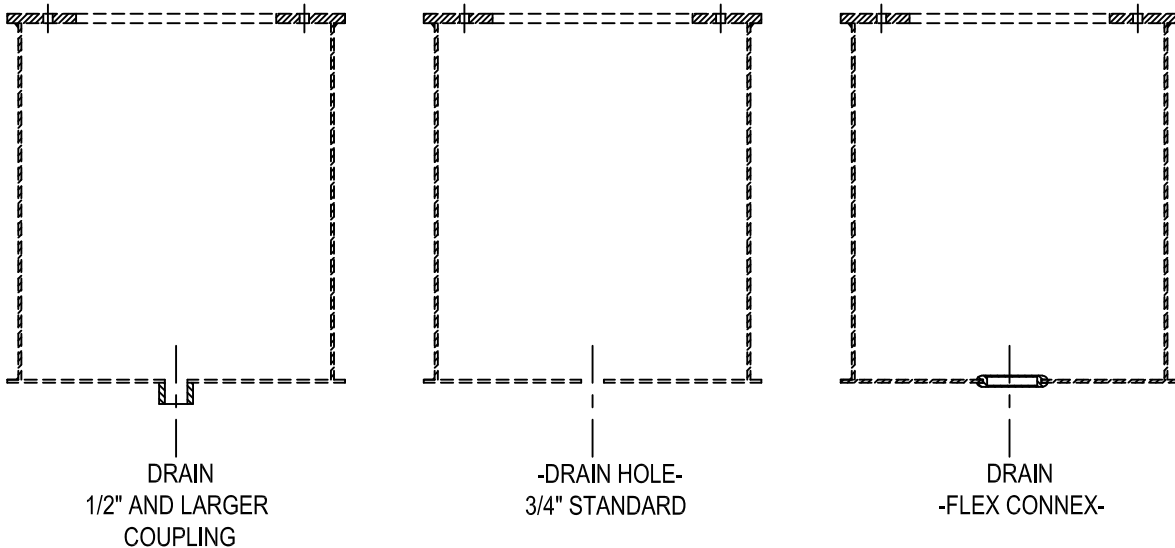
# OPTIONAL FEATURES

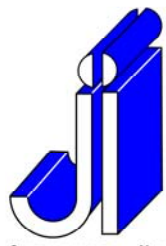
## ---LIGHT BASE GROUNDING OPTIONS---



## ---LIGHT BASE DRAINS---

STD. LOCATION'S (SHOWN)  
NON STD. LOCATION'S ARE AVAILABLE





JAQUITH  
INDUSTRIES INC.



SYRACUSE, NEW YORK - SALES@JAQUITH.COM (315) 478 - 5700 WWW.JAQUITH.COM

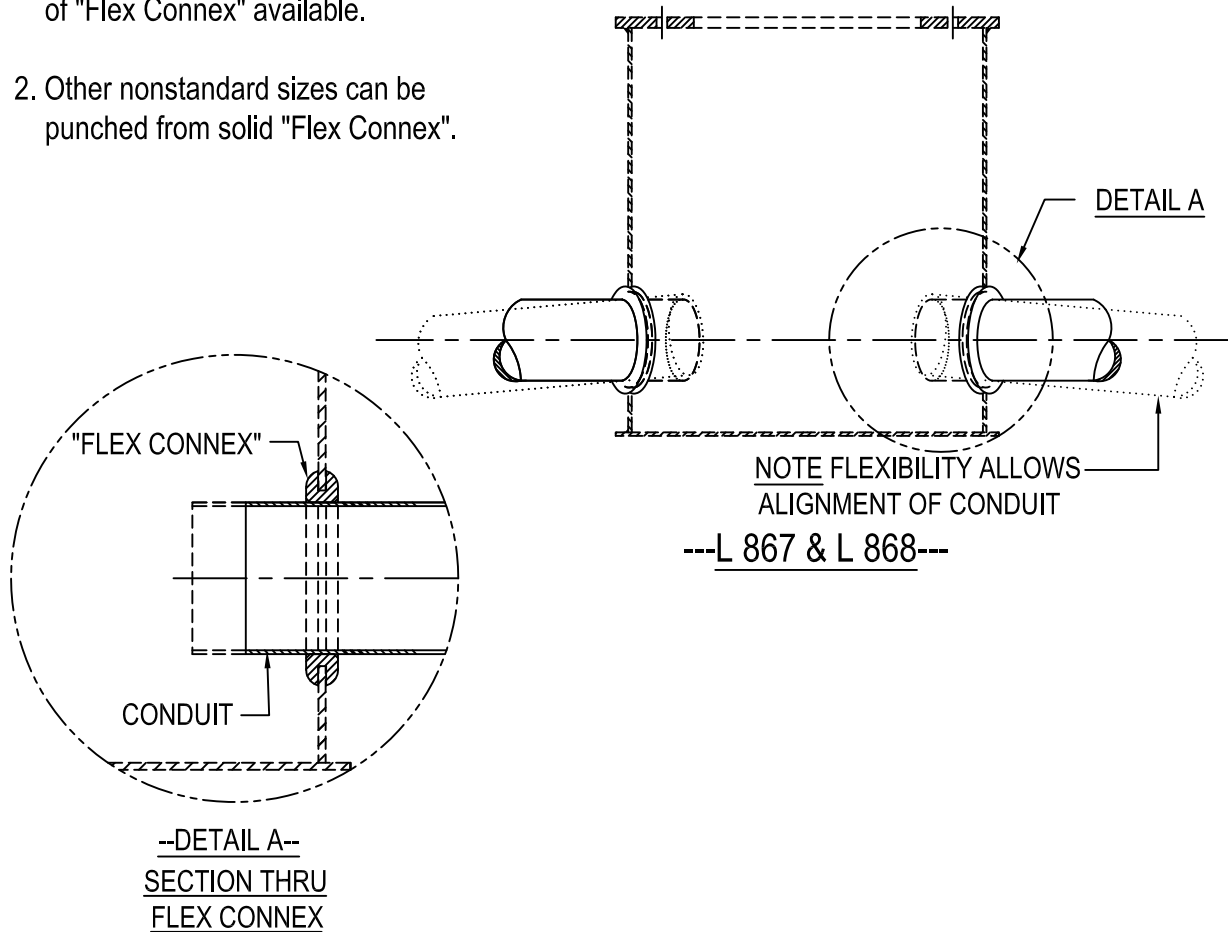


# Light Bases with "FLEX CONNEX"



Solid Grommets punched to size

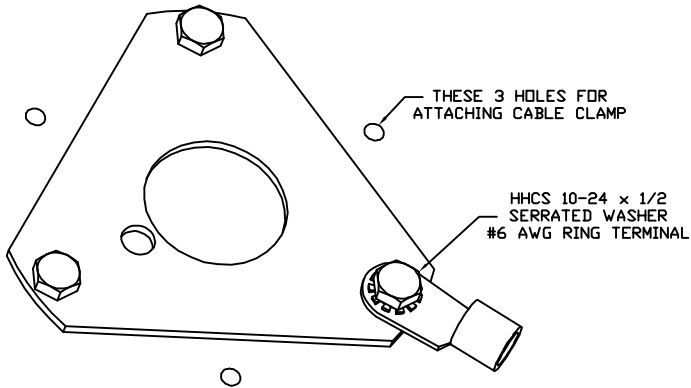
1. See dwg. # J-04 for other sizes of "Flex Connex" available.
2. Other nonstandard sizes can be punched from solid "Flex Connex".



**K-02h (rev 0)**

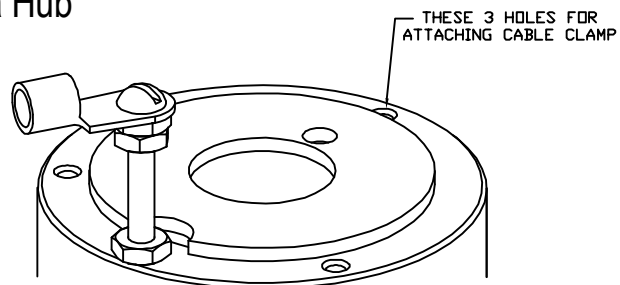
# Base Plate & Cover Grounding Options

1. For Grounding Heavy Base Plates and Covers with threaded openings



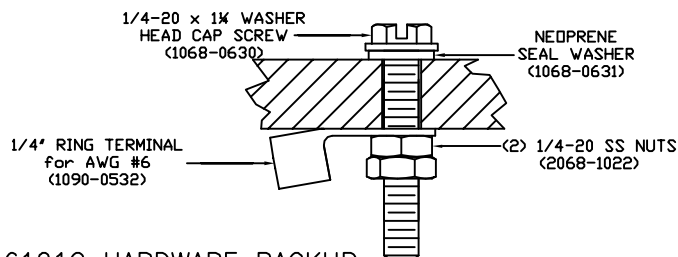
6125G HARDWARE PACKUP

2. For Grounding Base Plates with a Hub



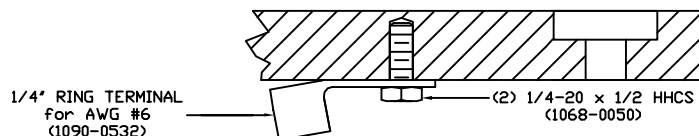
6120G HARDWARE PACKUP

3. For Cover Plates and Heavy Base Plates (less than 3/4" thick)



6121G HARDWARE PACKUP

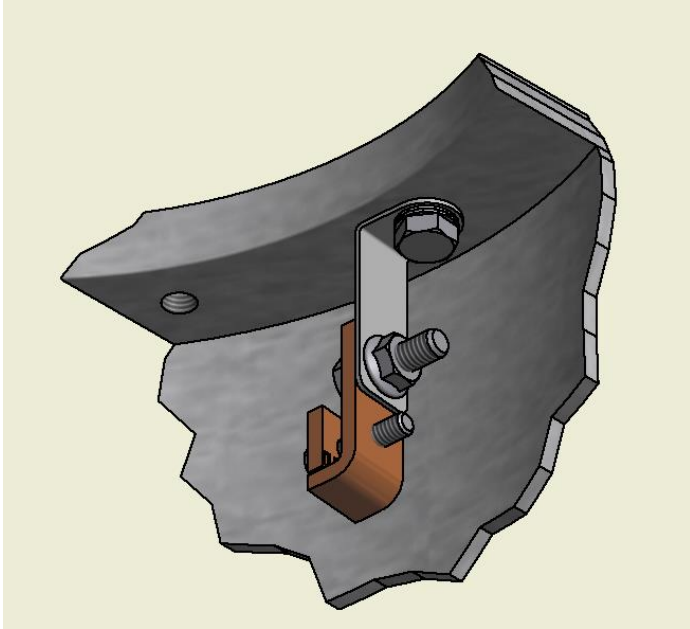
4. For Cover Plates and Heavy Base Plates (3/4" and thicker)



6124G HARDWARE PACKUP

# AWS0927 & AWS0928 Retrofit

## Grounding Bracket With AWS0919 Ground Clamp Assembly



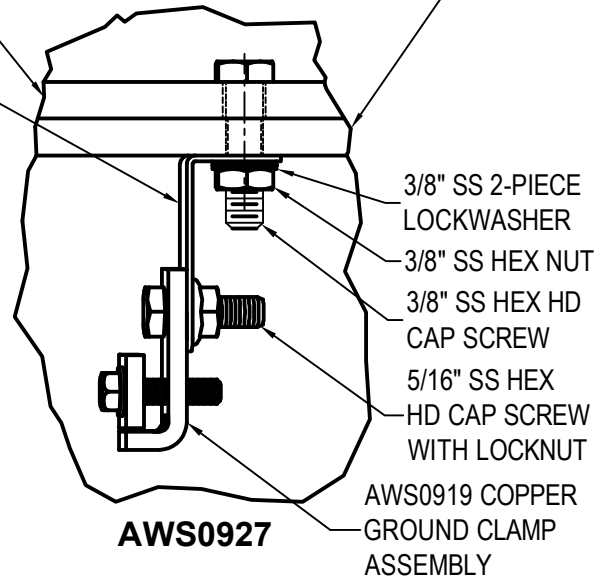
**AWS0928 RETROFIT GROUNDING BRACKET  
WITH AWS0919 GROUND CLAMP ASSEMBLY**

SS RETROFIT GROUNDING  
BRACKET  $\frac{3}{4}$ " WIDE X 1" X 2"

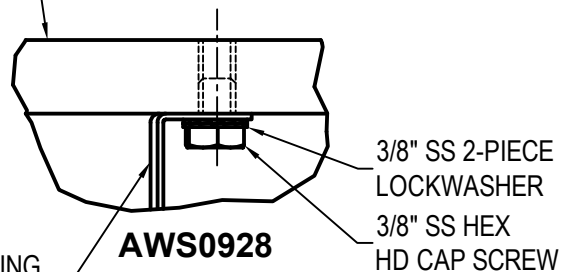
1. Material for Retrofit Grounding Bracket and all attaching hardware is 300 series stainless steel.
2. For L868 use one of (6) available tapped holes for attachment.
3. Drill & Tap an additional hole in Top Flange of L867 light Base
4. AWS0927 Retrofit Grounding Bracket Pickup consists of the following items:
  - (1) - SS Retrofit Grounding Bracket Pt.No. 8262
  - (1) - Copper Ground Clamp Assembly Pt.No. AWS0919
  - (1) - 3/8-16 x 1  $\frac{1}{2}$ " Lg Hex Head Cap Screw Pt.No. 1065-0205
  - (1) -  $\frac{3}{8}$ " SS 2-Piece Lockwasher Pt.No. 1068-0607
  - (1) -  $\frac{3}{8}$ " SS Hex Nut Pt.No. 1068-0719
  - (1) - 5/16-18 x 1  $\frac{1}{4}$ " Lg SS Hex Hd Cap Screw Pt.No. 1065-5031
  - (1) - 5/16-18 SS Locknut Pt.No. 1068-1778
5. AWS0928 Retrofit Grounding Bracket Pickup consists of the following items:
  - (1) - SS Retrofit Grounding Bracket Pt.No. 8262
  - (1) - Copper Ground Clamp Assembly Pt.No. AWS0919
  - (1) - 3/8-16 x 1  $\frac{1}{2}$ " Lg Hex Head Cap Screw Pt.No. 1065-1702
  - (1) -  $\frac{3}{8}$ " SS 2-Piece Lockwasher Pt.No. 1068-0607
  - (1) - 5/16-18 x 1  $\frac{1}{4}$ " Lg hex Head Cap Screw Pt.No. 1065-5031
  - (1) - 5/16-18 Locknut Pt.No. 1068-1778

TOP FLANGE OF L868 BOTTOM SECTION, L868  
MIDDLE SECTION OR L867 EDGE LIGHT BASE

BOTTOM FLANGE OF L868 TOP SECTION,  
L868 EXTENSION OR L867 EXTENSION



L868 TOP FLANGE OF LIGHT BASE, TOP  
SECTION OR EXTENSION - SEE NOTE #2  
L867 TOP FLANGE - SEE NOTE #3



SS RETROFIT GROUNDING  
BRACKET  $\frac{3}{4}$ " WIDE X 1" X 2"