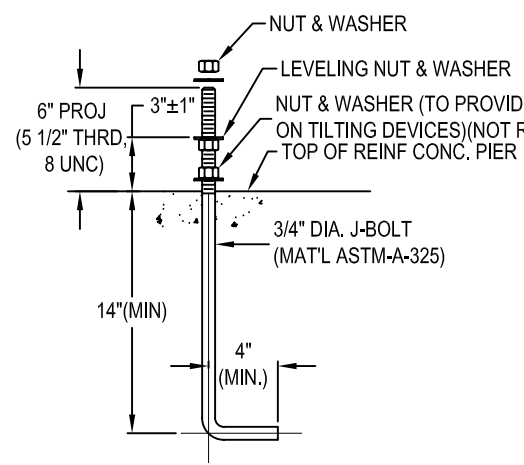
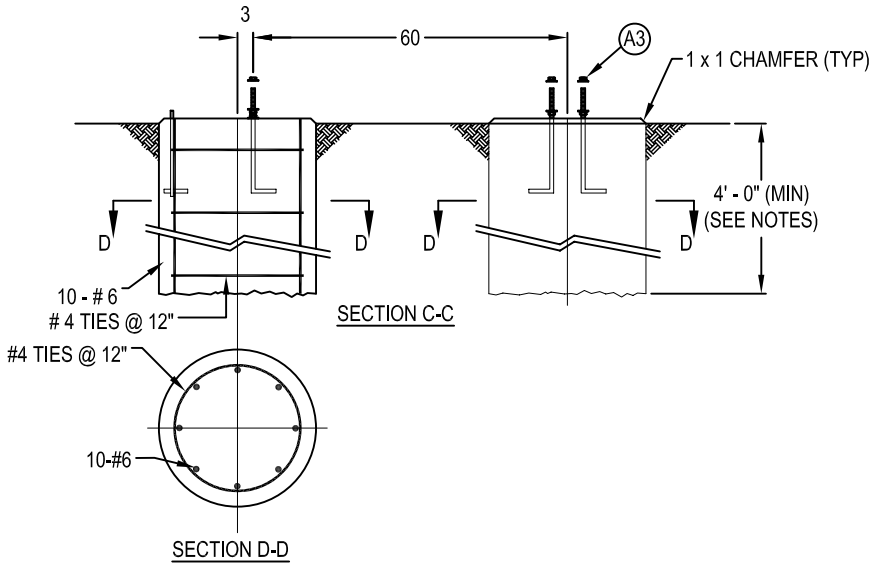
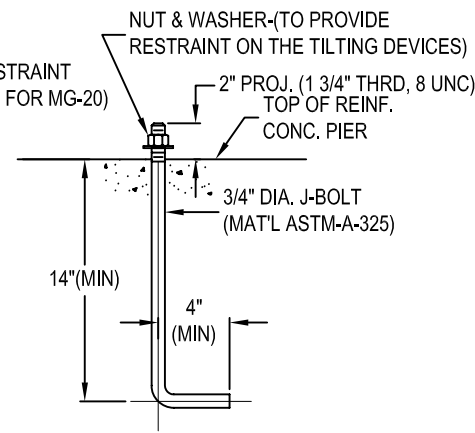


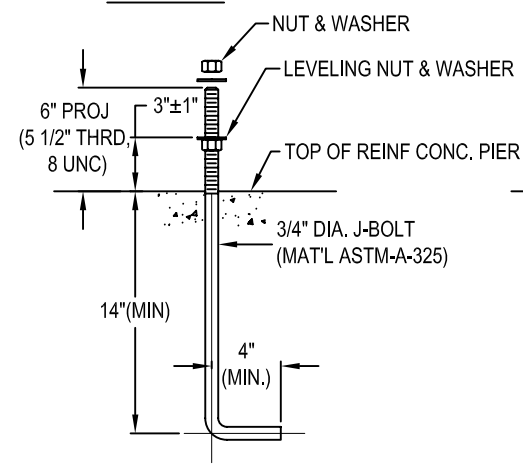
PLAN
FOUNDATION FOR LIR STRUCTURES MG-30 & MG-40



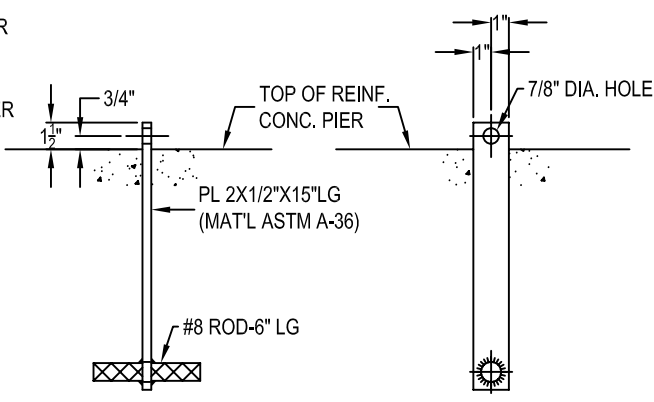
ANCHOR BOLT **A1**



ANCHOR BOLT **A2**



ANCHOR BOLT **A3**



ANCHOR PLATE **A4**

- NOTES:**
- FOUNDATIONS SHOWN HERE ARE ONLY REPRESENTATIVE & MUST BE SITE ADAPTED, EXCEPT FOR THE LOCATION OF ANCHOR BOLTS. THE FOUNDATION MAY BE CONCRETE PIERS OR ANY OTHER TYPE APPROVED BY FAA REGIONAL ENGINEERS. DESIGN LOAD FOR FOUNDATION: 25 PSF ON EXPOSED AREA OF STRUCTURE. MINIMUM SAFETY FACTOR FOR SOIL BEARING CAPACITY = 2.
 - FOR THE REPRESENTATIVE CONCRETE FOUNDATION SHOWN:
 - CONCRETE STRENGTH = 3,000 PSI @ 28 DAYS, (MIN)
 - SOIL BEARING CAPACITY = 3,000 PSF (MIN)
 - SECURELY PLACE ALL ELECTRICAL CONDUITS & ANCHOR BOLTS PRIOR TO PLACING CONCRETE.
 - PLACE ALL CONCRETE ON UNDISTURBED SOIL.
 - MINIMUM DEPTH OF CONCRETE PIERS = 4'-0" OR 1 FT BELOW LOCAL FROST LEVEL, WHICH EVER IS GREATER.
 - REINFORCEMENT STEEL PER ASTM A615, GR. 40; TIE WIRE TO BE 16 GAUGE OR LARGER ANNEALED IRON.

JACQUITH INDUSTRIES INC.
 PO BOX 780
 600 E. BRIGHTON AVE.
 SYRACUSE, NEW YORK 13205
 www.jaquith.com 315-478-5700

REV. LTR.	DATE	DESCRIPTION	CHECKED	APPROVED
A	11/28/01	REDRAWN IN AUTOCAD FORMAT		
DEPARTMENT OF TRANSPORTATION FEDERAL AVIATION ADMINISTRATION WASHINGTON, D.C. 20591				
ALSF-2 (6' - 128') & MALSR (40' - 128') L.I.R. STRUCTURES LIGHT MOUNTING HEIGHT 6'-1" TO 40'-0" FOUNDATIONS FOR LIR STRUCTURES MG-20, MG-30, & MG-40				
REVIEWED BY	SUBMITTED BY	APPROVED BY		
		TECHNICAL OFFICER DATE- 04/14/80 DRAWING NO. D-6155-19		
		ISSUED BY		REV. LTR.
				A