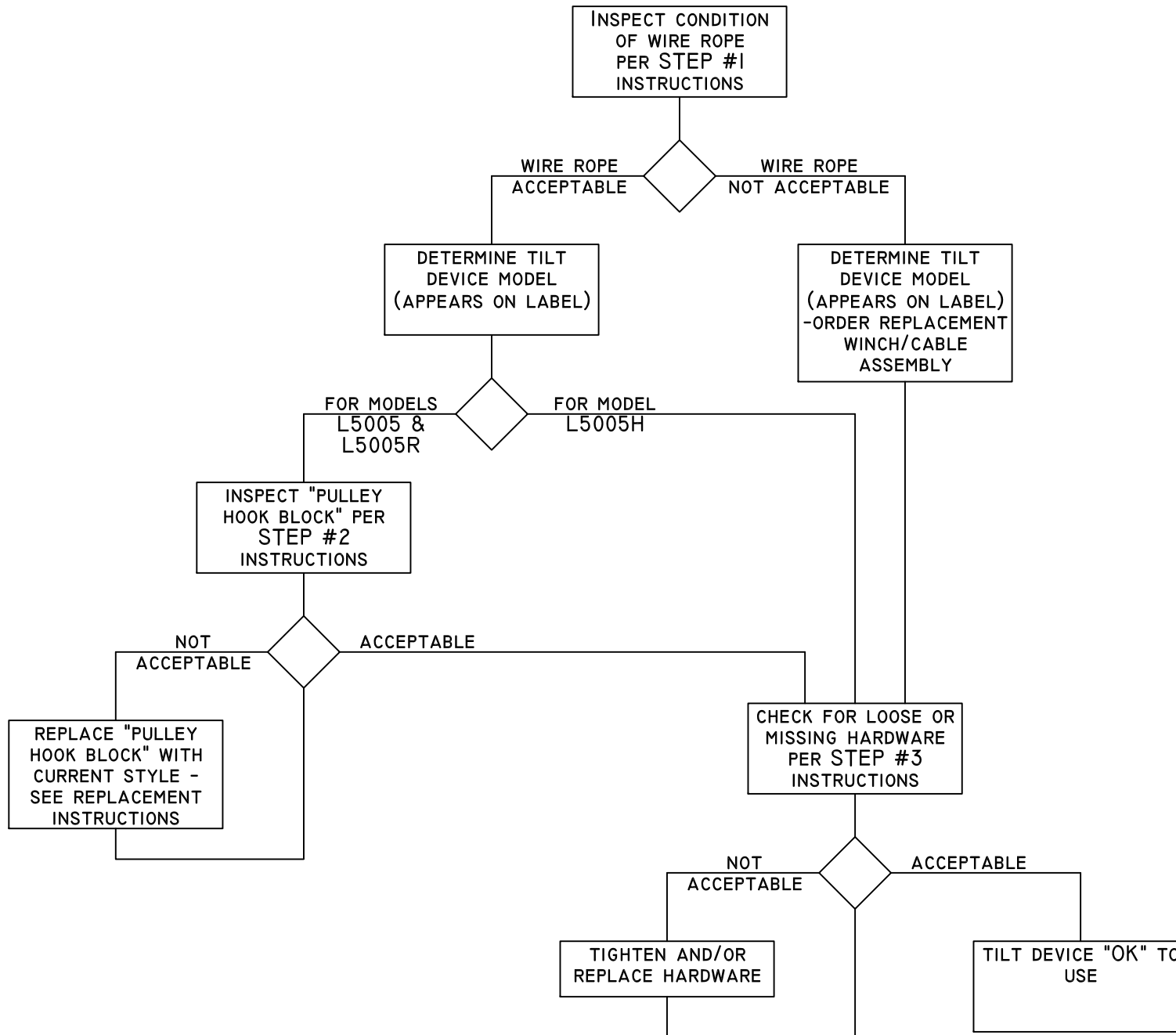


TILT DEVICE INSPECTION

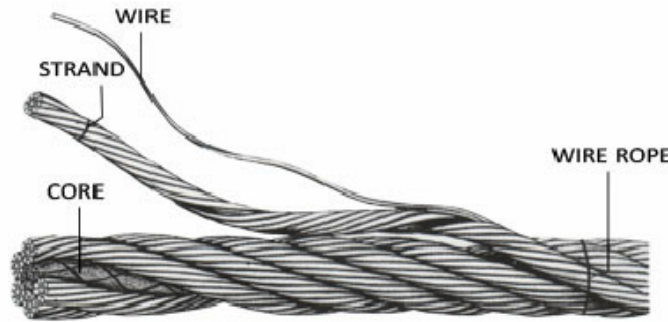
DECISION TREE/FLOW CHART DIAGRAM
(APPLIES TO ALL MODELS OF TILT DEVICES)



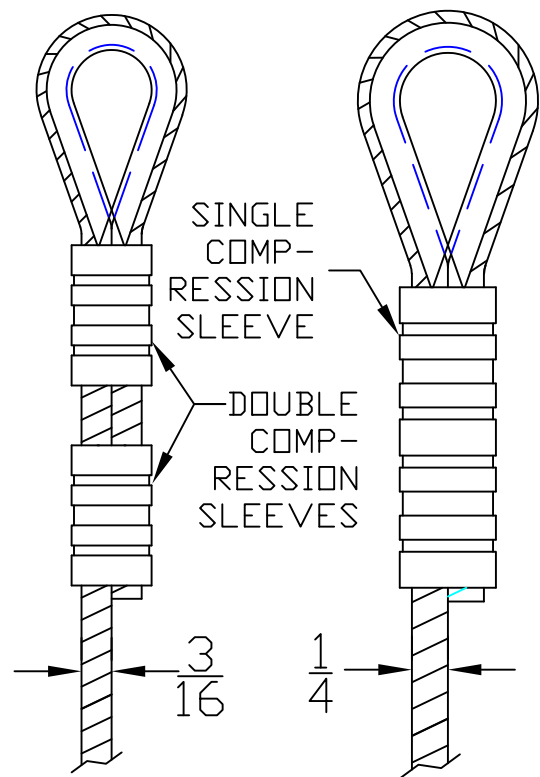
**STEP
#1**

TILT DEVICE INSPECTION

WIRE ROPE INSPECTION CRITERIA (APPLIES TO ALL MODELS OF TILT DEVICES (L5005,L5005R & L5005H))



WIRE ROPE CONSTRUCTION (INFORMATIONAL)



L5005/L5005R L5005H CHECK FOR SLIPPAGE OR LOOSENESS

WIRE ROPE WEAR & ABUSE

EXAMINE THE WIRE ROPE BY UNWINDING IT FROM THE WINCH DRUM. CHECK FOR "WEAR & ABUSE" AS SHOWN ABOVE. IT MAY HELP TO CAREFULLY RUN A CLOTH OVER THE WIRE ROPE TO CHECK FOR BROKEN WIRES. THE CLOTH WILL "CATCH" ON ANY WIRES THAT ARE FRAYED. CHECK THAT THE WIRE ROPE IS SECURELY ATTACHED TO THE WINCH DRUM WITH THE CLAMP HARDWARE. ALSO CHECK FOR LOOSENESS OR SLIPPAGE IN THE SWAGED LOOP ON THE END OF THE WIRE ROPE. ANY EVIDENCE OF WEAR, ABUSE OR SLIPPAGE IS CAUSE FOR REPLACEMENT PER THE ORDERING INFORMATION AT THE END OF THESE INSPECTION INSTRUCTIONS.

**STEP
#2**

TILT DEVICE INSPECTION

PULLEY HOOK BLOCK INSPECTION CRITERIA (APPLIES ONLY TO L5005 & L5005R MODELS OF TILT DEVICES)



**SAFETY
LATCH**



ORIGINAL STYLE
(USED ON L5005)

CURRENT STYLE
(USED ON L5005R)

EXAMINE THE "PULLEY HOOK BLOCK" TO DETERMINE IF THE "CURRENT" STYLE IS ATTACHED. IF THE "ORIGINAL" STYLE PULLEY HOOK BLOCK IS ATTACHED TO THE TILT DEVICE IT MUST BE REPLACED WITH THE "CURRENT" STYLE. ALSO, CHECK THE CONDITION OF THE "SAFETY LATCH" TO MAKE SURE IT IS FUNCTIONING PROPERLY. IT MUST SPRING BACK TO THE POSITION SHOWN AFTER IT IS COMPRESSED TO ALLOW ATTACHMENT TO THE LIR BASE ASSEMBLY. IF THE SAFETY LATCH IS MISSING OR DOES NOT FUNCTION PROPERLY THE "PULLEY HOOK BLOCK" MUST BE REPLACED.

NOTE: L5005R UNITS FIRST SHIPPED ON OR ABOUT 4/2019

**STEP
#3**

TILT DEVICE INSPECTION

**HARDWARE LOOSE AND/OR MISSING INSPECTION
(APPLIES TO ALL MODELS OF TILT DEVICES)**

CHECK THAT 1/2" LOCKNUT
IS WRENCH TIGHT & HOLDS
HANDLE IN RIGID ALIGNMENT
TO WINCH SHAFT

WINCH WITH WIRE ROPE
(JAQUITH P/N 4673 - FOR L5005
& L5005R)

NOTE: P/N 4673 INCLUDES
PULLEY HOOK BLOCK
(JAQUITH P/N 4767 - FOR L5005H)

(3) 3/8"-16 X 1/4" LG SS
HEX HEAD CAP SCREWS
(JAQUITH P/N 1065-0202)

(3) 3/8" SS SPLIT STYLE
LOCKWASHERS
(JAQUITH P/N 2068-0110)

(3) 3/8"-16 SS HEX NUT
(JAQUITH P/N 1068-0719)
-RECOMMENDED TORQUE IS
180-200 IN.LBS FOR THESE
FASTENERS

3/4" PUSH BUTTON PIN
W/CABLE
(JAQUITH P/N 4728)

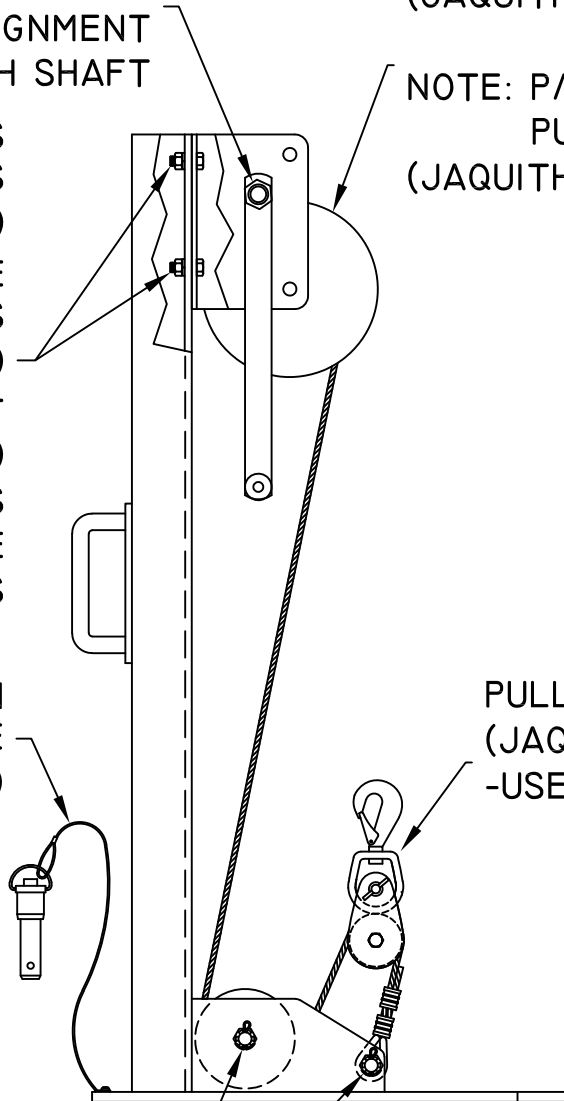
PULLEY HOOK BLOCK
(JAQUITH P/N 6090-1806)
-USED ONLY ON L5005
& L5005R-

(2) 1/2"-13 SHEAVE BOLTS
(JAQUITH P/N 6065-1802)

(2) 1/2"-13 CROWN NUT
(JAQUITH P/N 6068-1801)

(2) 3/32 X 1" LG COTTER PIN
(JAQUITH P/N 6067-1798)

-DO NOT APPLY EXCESSIVE
TORQUE WHEN ASSEMBLING
-ONLY NECESSARY FOR NUTS
TO BE FLUSH AGAINST PLATES



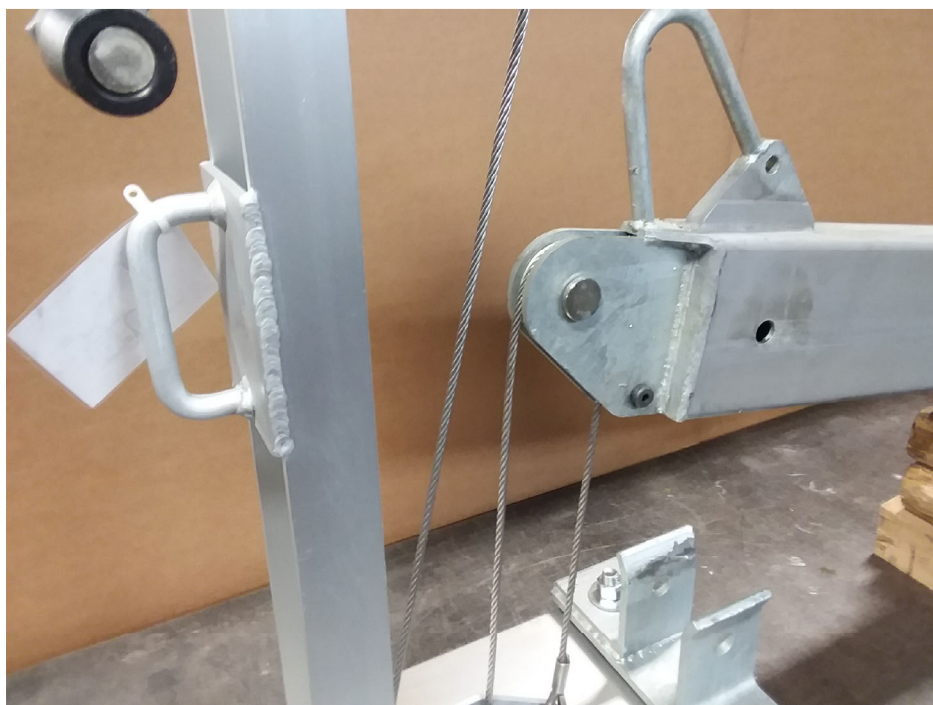
PROPER ATTACHMENT OF TILT DEVICE



MG-20 STYLE LIR
(USES L5005R TILT DEVICE)



MG-30/40 STYLE LIR
(USES L5005R TILT DEVICE)



ANTENNA TOWER STYLE BASE
(USES L5005H TILT DEVICE)

