



# L.I.R. L-5005

## Lifting Device & L-5006 Jack Ass'y

**L-5005 lifting device is used to raise / lower all MG style LIR masts. Recommended for masts over 10 feet tall. For MG-30 & 40 a L-5006 Jack Assembly is required. Only (1) L-5005 / L-5006 are required per system, not per mast. The units are portable and are intended to be moved from station to station. Lifting device requires L-5004 anchor plate to be installed in PCC foundation. Also available are aluminum adjustable maintenance stands: see data sheet L-5016**

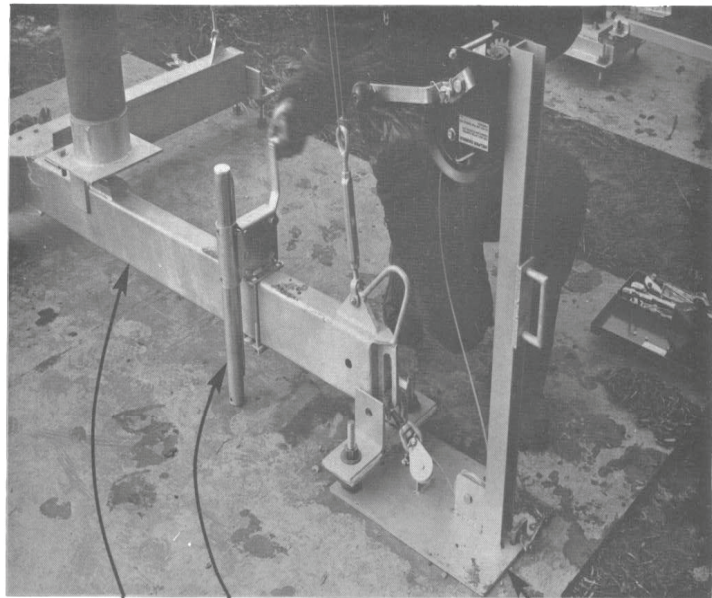


FIG. 3-5  
LOWERING MG-30/40 STRUCTURE (REF SECTION 3.3)

Jaquith Industries also offers a **HEAVY DUTY** version, L-5005H. This version has thicker stainless cable and connections. These L-5005H are supplied with the Specialty Masts

**JAQUITH INDUSTRIES INC**

**600 East Brighton Ave**

**Syracuse, NY 13210**

**USA**

Phone: 315-478-5700

Fax: 315-478-5707

Web site: [www.jaquith.com](http://www.jaquith.com)

Email: [sales@jaquith.com](mailto:sales@jaquith.com)

L-5005: 6061-T6 Aluminum

Finish: Matte Anodize

Mil A 8625 Type 2 Class 1

Shipping Weight L-5005: 45 lbs

L-5006: 18 lbs