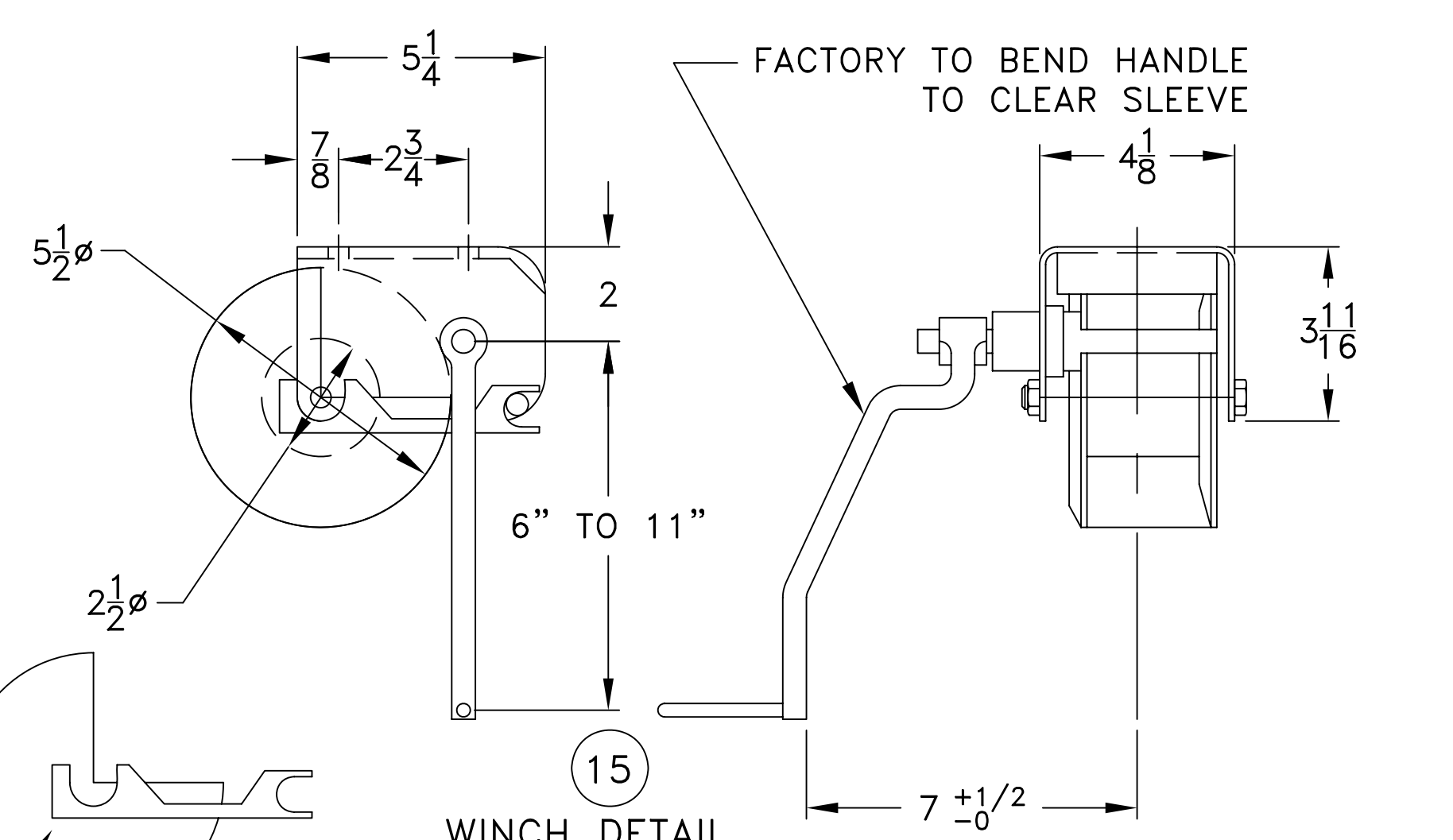
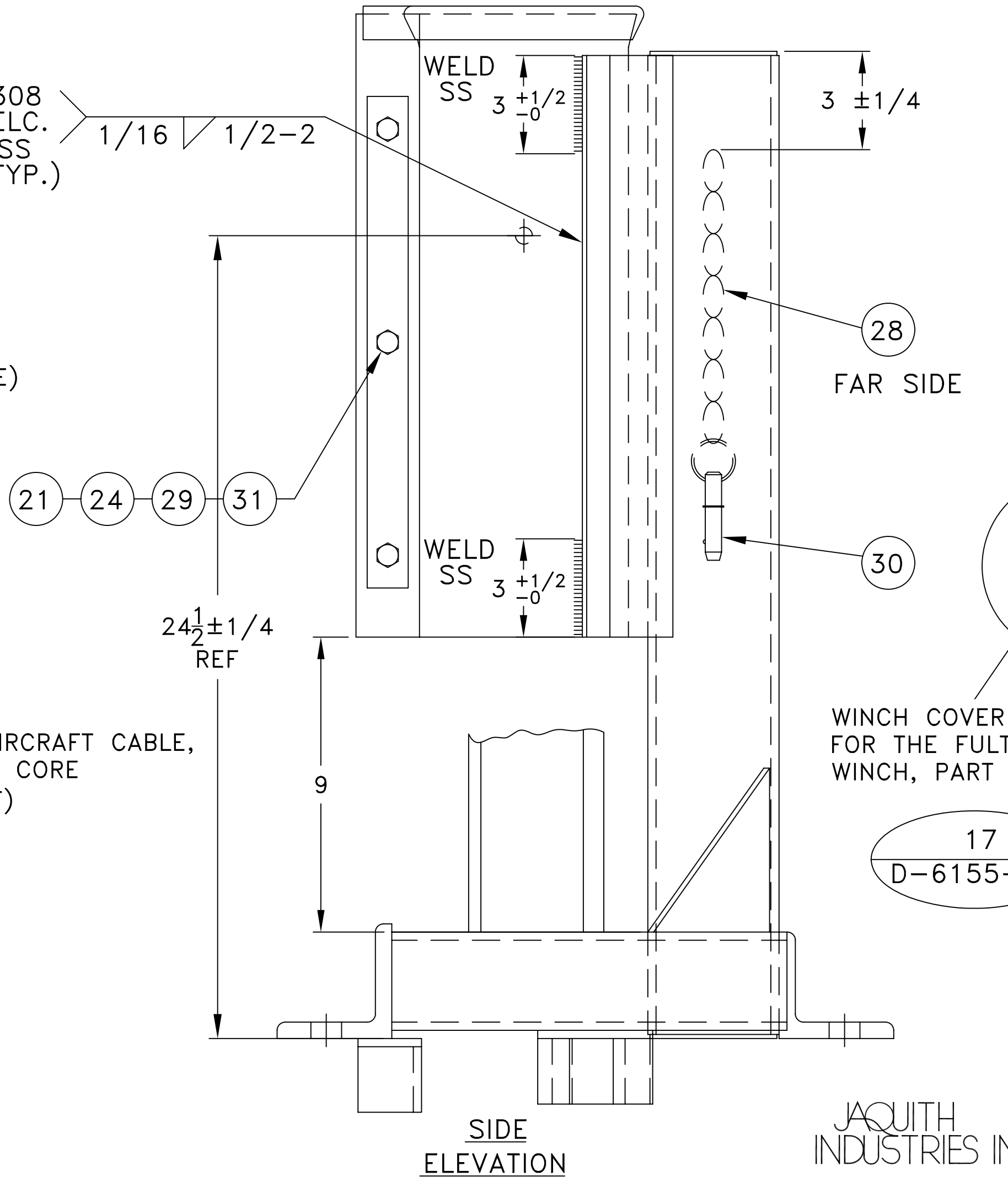
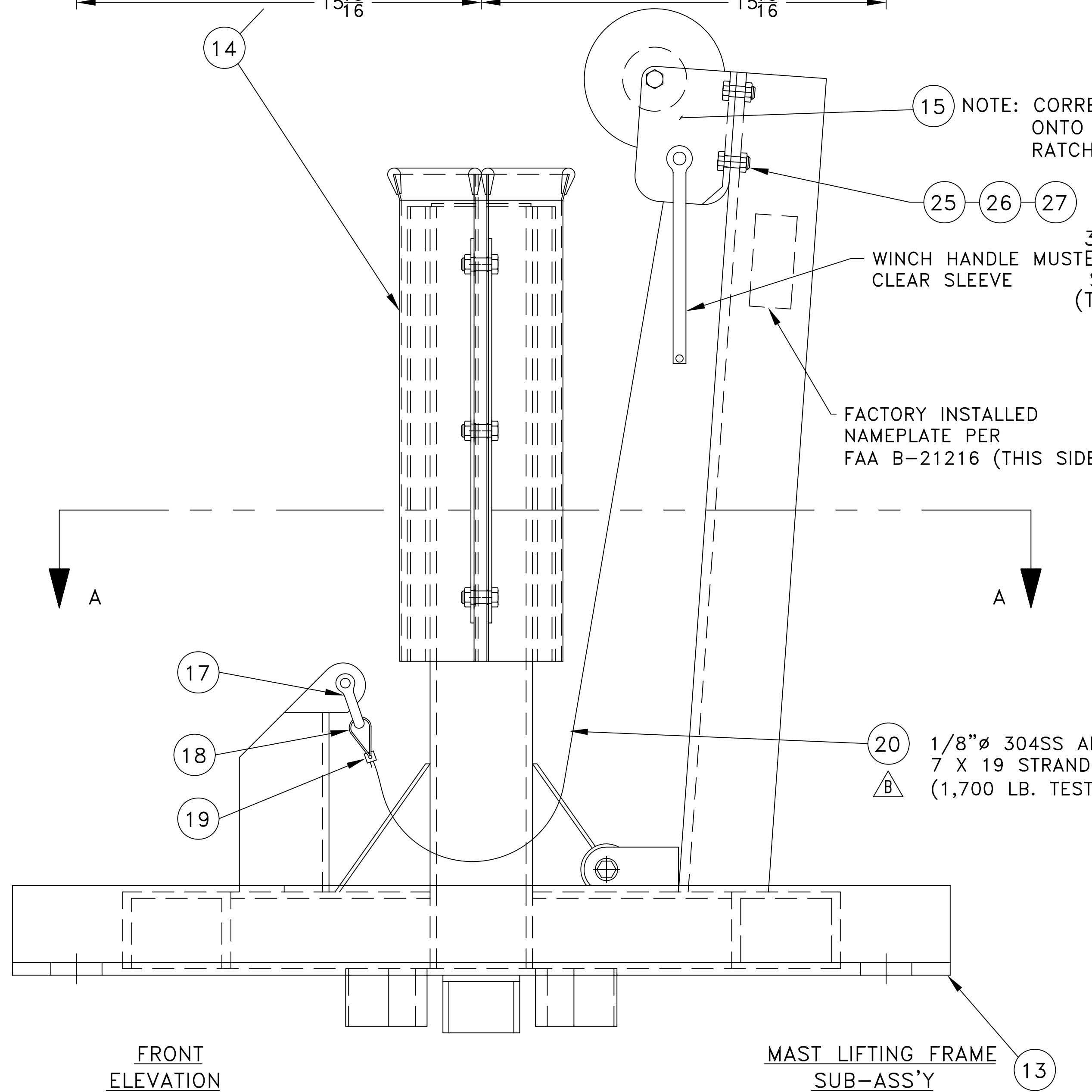


BILL OF MATERIALS				
ITEM	QUAN	DESCRIPTION	MAT'L	DETAIL DRG. NO
13	1	LIFTING FRAME SUB-ASS'Y		D-6155-42
14	1	SLEEVE	304SS	D-6155-44
15	1	WINCH, FULTON MODEL K-1051 OR EQU. W/ WEATHERPROOF COVER		D-6155-41
16	1	SHEAVE, 2" DIA.	NON-METALLIC	D-6155-41
17	1	3/8" SCREW PIN SHACKLE	SS	
18	1	1/4" THIMBLE	SS	
19	1	1/4" SPLICE	SS	
20	1	1/8"Ø STRAND CABLE X 40'LG	SS AIRCRAFT CABLE	
21	3	1/2-13 x 3" HEX HD. BOLT	SS	
22	1	1/2-13 x 2" HEX HD. BOLT	SS	
23	2	1/2" FLAT WASHER	SS	
24	3	1/2-13 HEX NUT	SS	
25	2	3/8-16 x 1 1/4 HEX HD. BOLT	SS	
26	2	3/8-16 HEX NUT	SS	
27	2	3/8" LOCKWASHER	SS	
28	1	STR. LINK CHAIN #4 x 18"	GALV.	D-6155-41
29	2	REINF. STR. 1/8 x 1 1/2 x 15	SS	D-6155-43
30	1	ALIGNMENT PIN, AEROFAST NO. D8-10R-303 OR EQUAL	SS	D-6155-41
31	3	LOCKWASHER, 1/2"	SS	
32	1	1/2-13 LOCKNUT	SS	

NOTE: CORRECT DIRECTION FOR WINDING CABLE ONTO WINCH DRUM IS INDICATED BY THE RATCHET SOUND



REV. LTR.	DATE	DESCRIPTION	CHECKED	APPROVED
E	10-31-06	ADDED WINCH COVER; MINOR REVISIONS		R.D.P.
D	4/24/04	ITEM 29 WAS 11 GA.		R.D.P.
C	5/2/03	CHANGED WINCH CABLE TO SHOW PROPER ORIENTATION		R.D.P.
B	9/7/01	REDRAWN IN AUTOCAD 2000 FORMAT-ITEM #20 WAS 1/4Ø BLACK POLY ROPE		R.D.P.
A	10/27/80	ITEM # 32 ADDED, ITEM # 27 WAS FLAT WASHER		

DEPARTMENT OF TRANSPORTATION FEDERAL AVIATION ADMINISTRATION WASHINGTON, D.C. 20591				
ALSF-2 (6' - 128') & MALSR (6' - 128') L.I.R. STRUCTURES LIGHT MOUNTING HEIGHT 40'-1" TO 128'-0" MAST LIFTING FRAME ASSEMBLY				
REVIEWED BY	SUBMITTED BY	APPROVED BY		TECHNICAL OFFICER
DESIGNED BY	ISSUED BY	DATE-	DRAWING NO.	REV. LTR.
DRAWN BY WLJ			D-6155-41	E
CHECKED BY				

JACQUITH INDUSTRIES INC.  
PO BOX 780  
600 E. BRIGHTON AVE.  
SYRACUSE, NEW YORK 13205  
www.jaquith.com 315-478-5700

ALL DIMENSIONS IN INCHES UNLESS OTHERWISE SPECIFIED

APPROX. WT. 130 LBS. PLUS WINCH