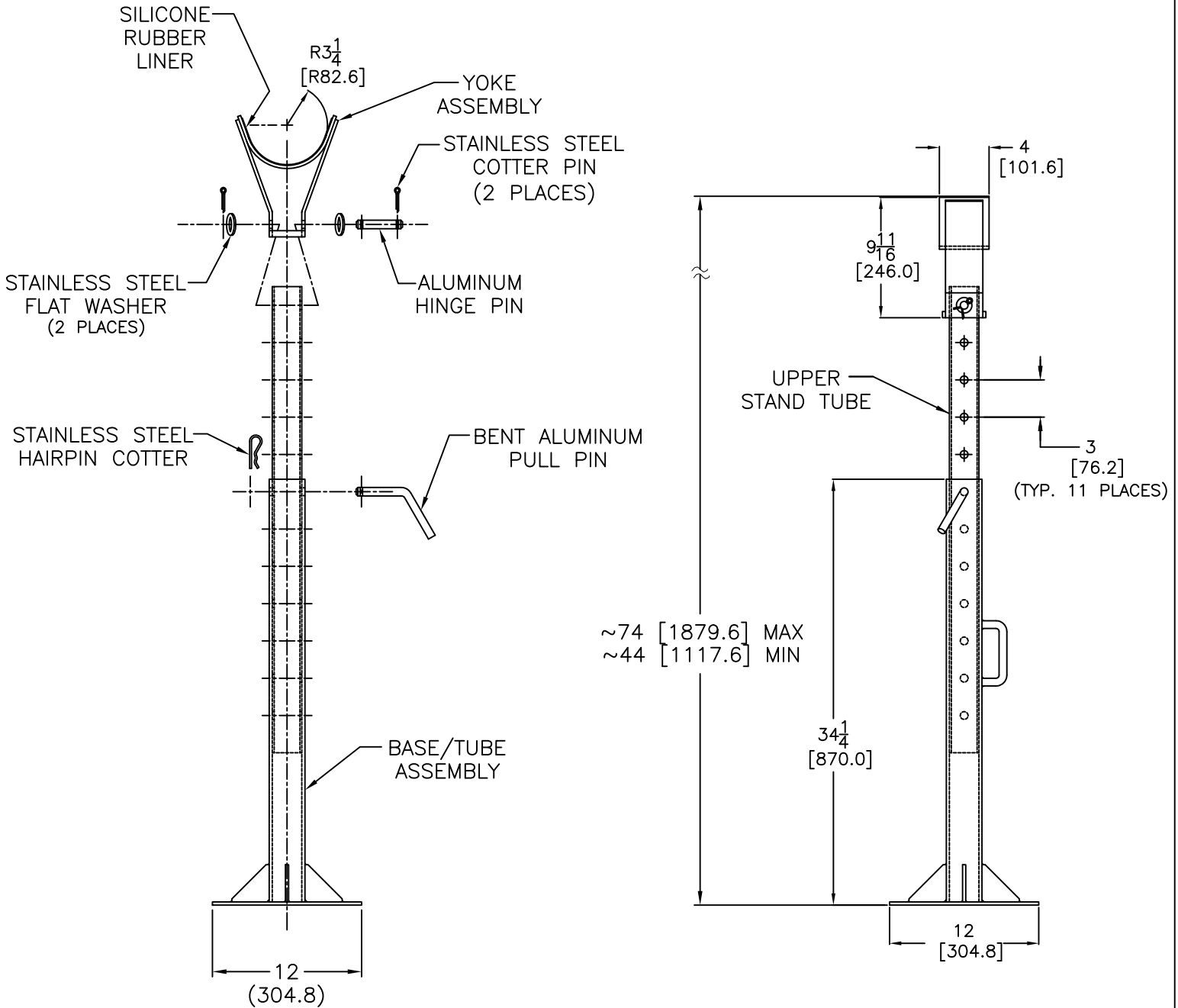


L5016

ADJUSTABLE MAINTENANCE STAND



DRAWING NOTES:

Millimeters shown in []
 Maintenance Stand has 30"[762] of total adjustment, in 3"[76.2] increments. L5016 is a portable Aluminum Maintenance Stand for use where a permanent stand is not practical

GENERAL NOTES:

Material: 6061 T6 Aluminum (except where noted)
 Finish: Matte Anodize MIL A 8625 Type 2 Class I
 Repair/Replacement parts available upon request