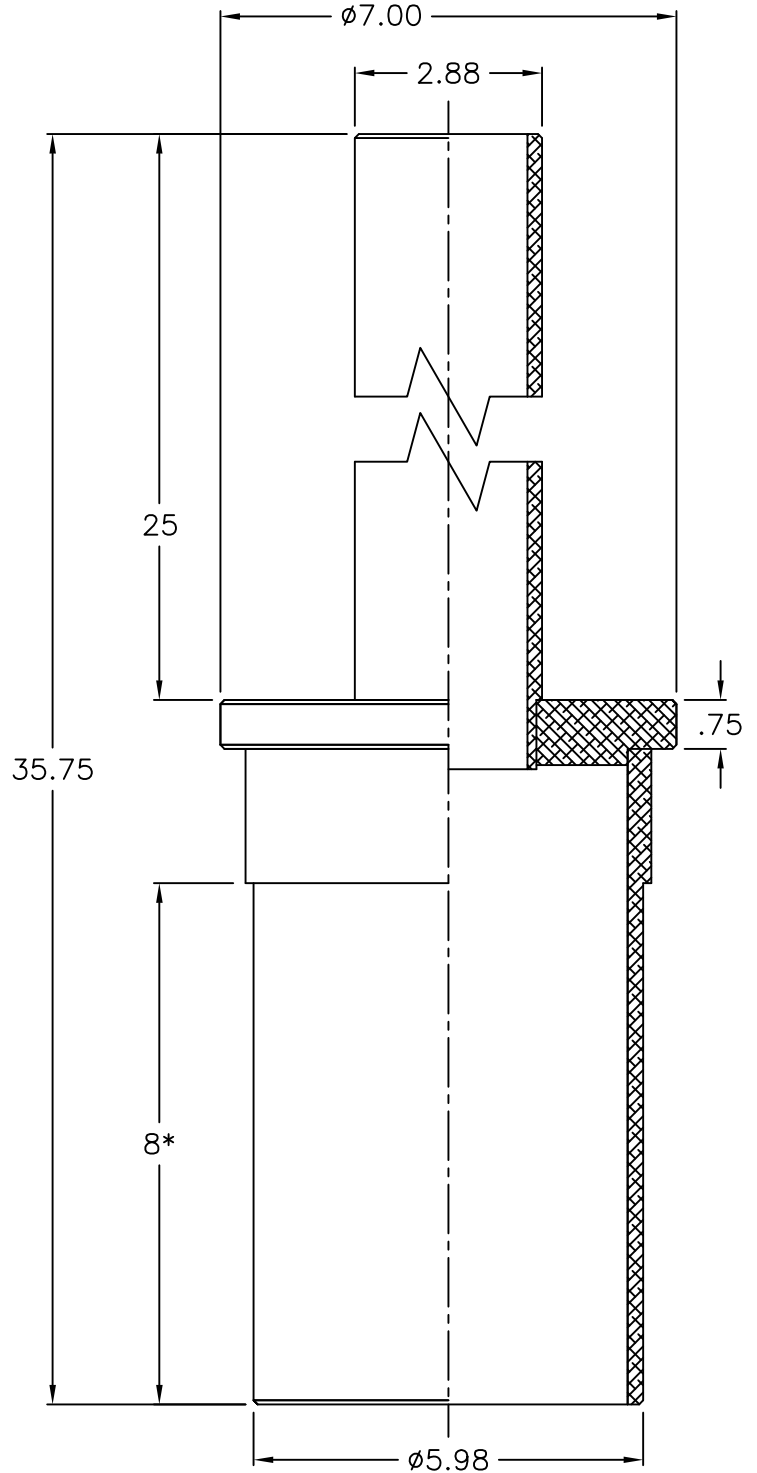
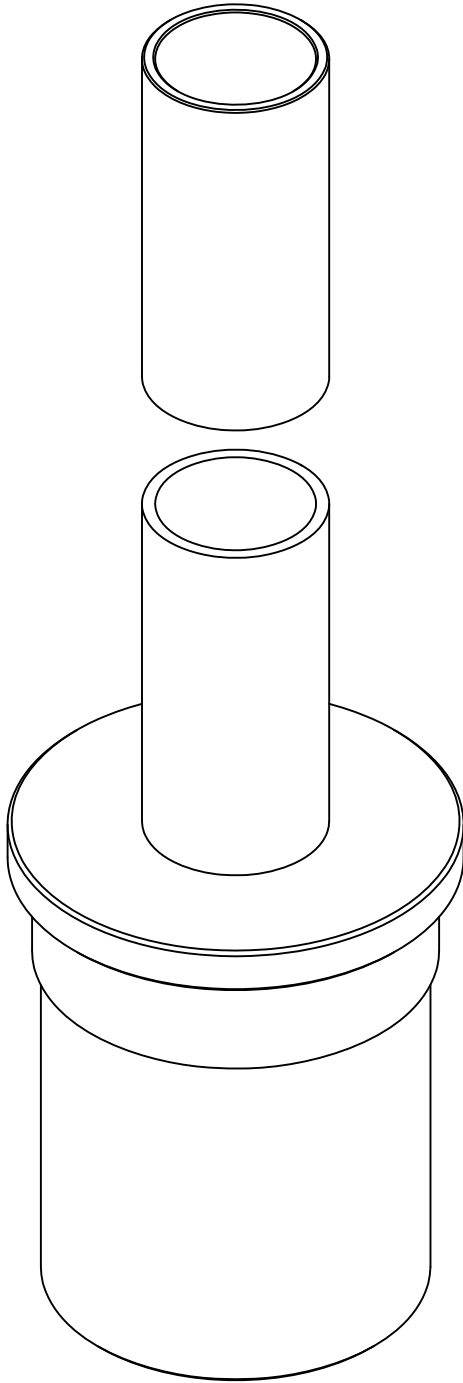


# L2815

TOP CAP with  $2\frac{7}{8}$ " x 25" TENON  
for MTI REFLECTOR



\*See Drawing Notes

**DRAWING NOTES:**

8" Surface for Bonding into LIR Fiberglass Tube

**GENERAL NOTES:**

Material: 6061 T6 Aluminum

Finish: Matte Anodize MIL A 8625 Type 2 Class I

JACQUITH INDUSTRIES INC. ~ 600 EAST BRIGHTON AVE, SYRACUSE, NEW YORK 13205 ~ PH: (315) 478-5700 ~ FAX: (315) 478-5707