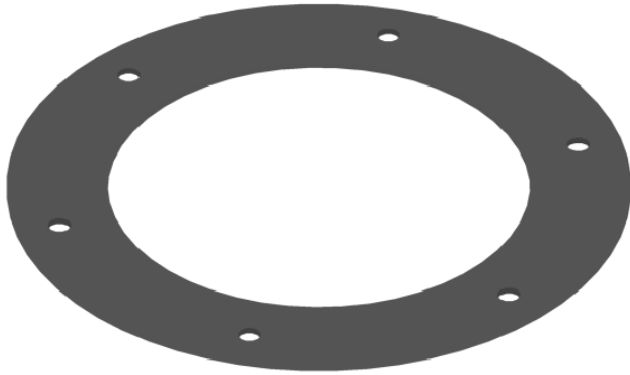
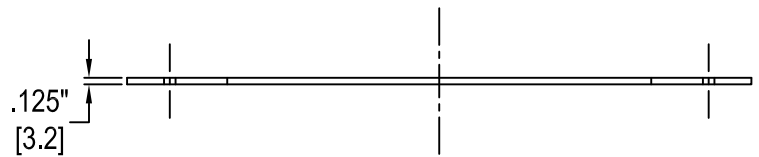
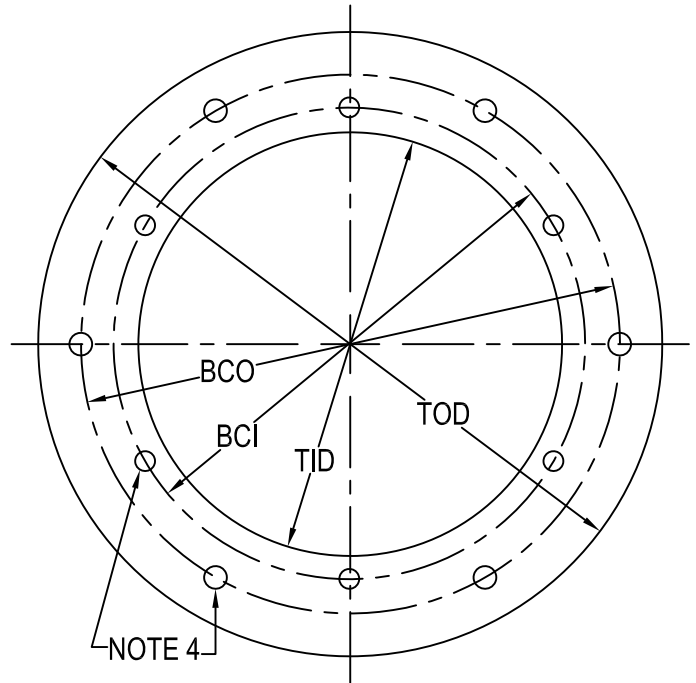




# Gasket for L-867 & L895



Neoprene Durometer 55 (10530287)



1. Approved and Certified to FAA Advisory Circular AC150/5345-42 (Current Revision) L867  
 Size: B=12", D=16", E=24"

2. Material: Neoprene Durometer 55

\* 3. Material: Neoprene R431 (Foam)  
 (Alaskan Application)

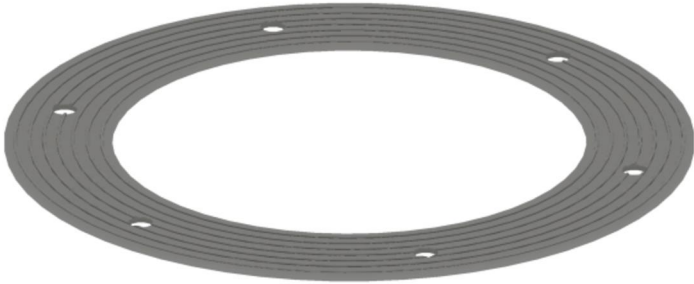
4. (6) 7/16" Ø equally spaced, thru holes

TYPE	TOD	BCO	BCI	TID	OLD P/N
<b>10530287</b>	11.938"	11.25"	10.25"	9"	A2052
12" L867B	[303.2]	[285.8]	[260.4]	[228.6]	
* <b>10532042</b>	11.938"	————	10.25"	9"	AK2052
12" L867B	[303.2]	————	[260.4]	[228.6]	
<b>10530281</b>	15.938"	14.25"	————	12.438"	A6052
16" L867D	[404.8]	[362]	————	[315.9]	
<b>10533055</b>	23.75"	21.5"	————	20"	A7052
24" L867E	[603.3]	[546.1]	————	[508]	

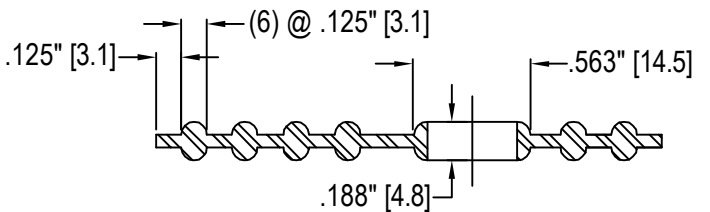
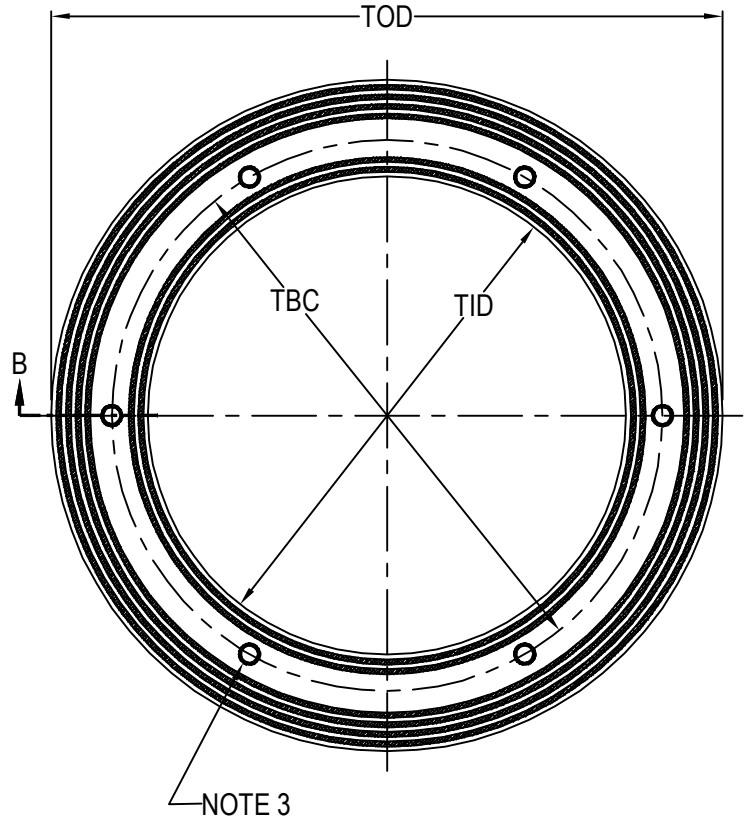
[ ] = dimensions in metrics; mm.

\* = SEE NOTE 3

# Gasket for LB1, LB3, & LB4 Silicone



Silicone Gasket



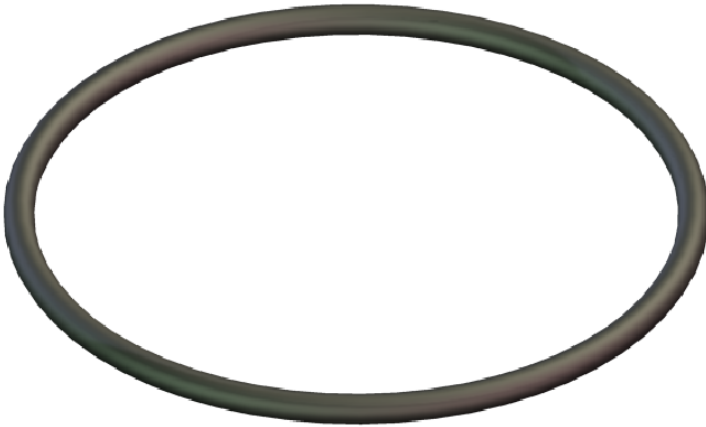
PARTIAL SECTION B  
**10530863**

1. Manufactured in accordance to FAA-E-1315a
2. Material: Silicone Rubber, Class II, grade 60 per spec. MIL-R-5847 C  
 MIL-B-8954, QPL ASNMT-69-3
3. (6) 7/16" Ø equally spaced, thru holes

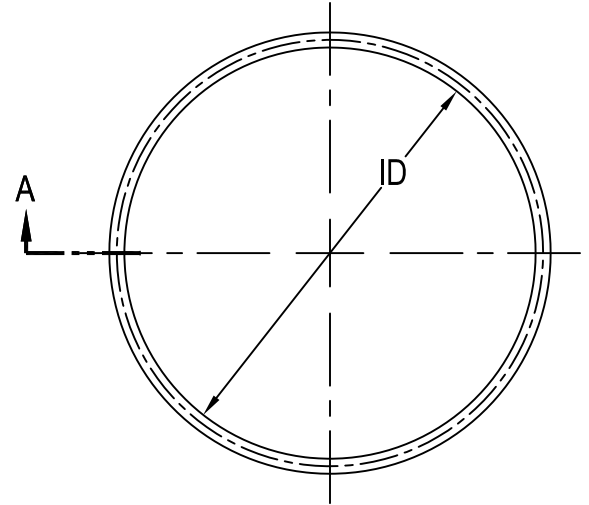
TYPE	TOD	TBC	TID	OLD P/N
<b>10530863</b>	17.375"	14.25"	12.375"	A6050
16"	[441.3]	[362]	[314.3]	

[ ] = dimensions in metrics; mm.

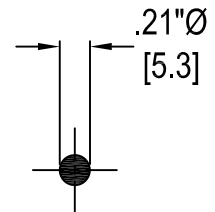
# Gasket Silicone 'O' Ring



Silicone 'O' Ring



1. Approved and Certified to FAA Advisory Circular AC150/5345-42 (Current Revision) L868  
Size: B=12", C=15"  
A=10" / AC150/5345-42



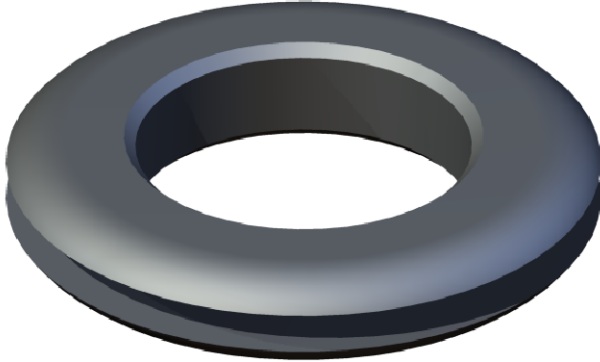
PARTIAL SECTION A

2. Material: Silicone Rubber, high and low temperature resistant  
Mil R 5847 C,  
Fed. spec. ZZ-R-765

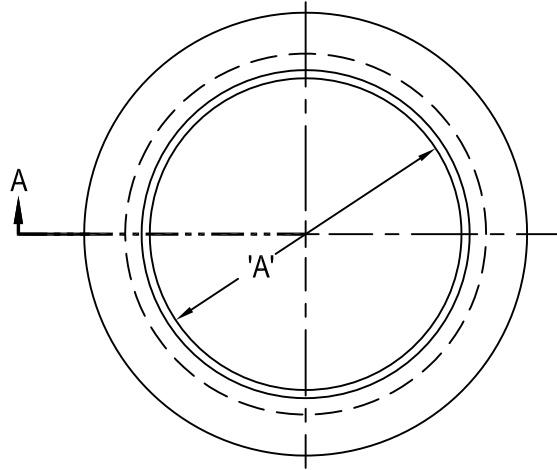
TYPE	ID	OLD P/N
<b>10530289</b> 6" L869	4.375" [111.1]	A0926 (obsolete)
<b>10530791</b> 10 " L868A	8.16" [207.3]	A0906 (obsolete)
<b>10530021</b> 12" L868B	10.16" [258]	A0904
<b>10530274</b> 15" L868C	13.6" [334.3]	A0903

[ ] = dimensions in metrics; mm.

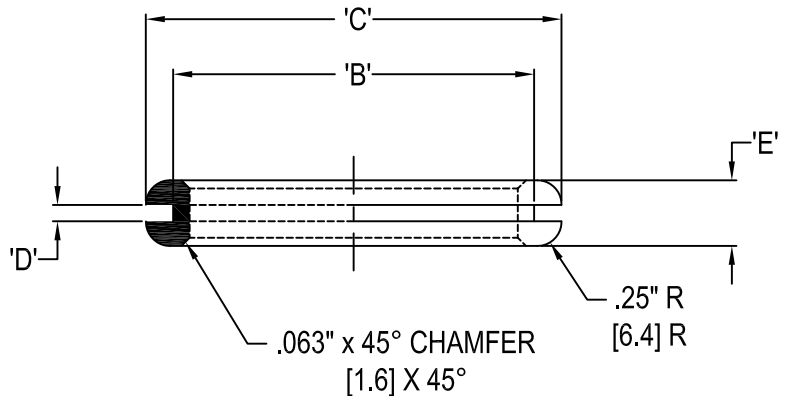
# FLEX CONNEX & SOLID GROMMETS



FLEX CONNEX & SOLID GROMMET



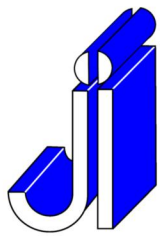
1. Approved and Certified to FAA Advisory Circular 150/5345-42 (Current Revision)
2. Material: Neoprene 55 durometer minimum
3. Solid Flex Connex with Nonstandard Punched I. D. Sizes are Available upon request
4. Flex connex shipped in bulk only



PARTIAL SECTION A

CLASS IA & CLASS IB						
CONDUIT SIZE	3/4"	1"	1 1/2"	2"	3"	4"
'A'	1" [25.4]	1.313" [33.4]	1.875" [47.6]	2.375" [60.3]	3.5" [88.9]	4.5" [114.3]
'B'	1.375" [34.9]	1.688" [42.9]	2.25" [57.2]	2.75" [69.9]	3.875" [98.4]	4.938" [125.4]
'C'	1.875" [47.6]	2.188" [55.6]	3" [76.2]	3.375" [85.7]	4.5" [114.3]	5.75" [146.1]
'D'	.125" [3.2]	.125" [3.2]	.125" [3.2]	.125" [3.2]	.125" [3.2]	.125" [3.2]
'E'	.5" [12.7]	.5" [12.7]	.5" [12.7]	.5" [12.7]	.5" [12.7]	.5" [12.7]
SOLID	10531094	10531095	10531172	10531105	10531100	10533092
FLEX	10531082	10531083	10531171	10531093	10531099	10532041

[ ] = dimensions in metrics; mm

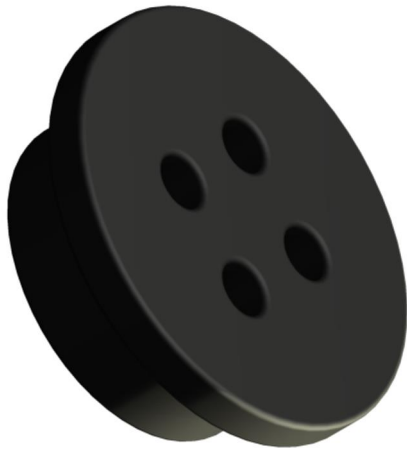


JAQUITH  
INDUSTRIES INC.

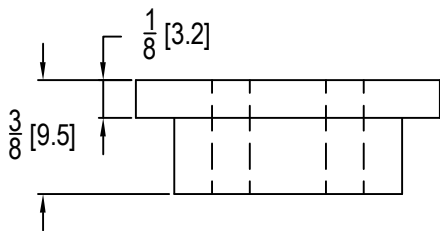
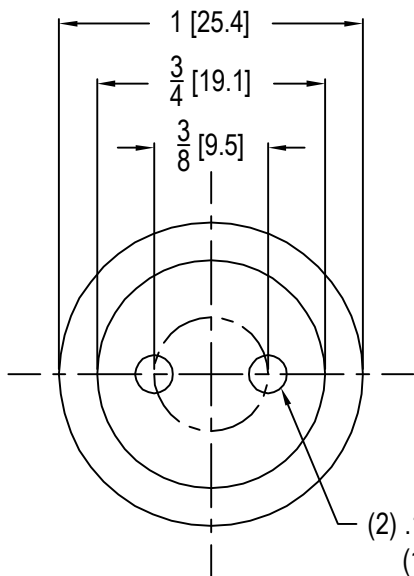


# Wire Grommet

SYRACUSE, NEW YORK - SALES@JAQUITH.COM (315) 478 - 5700 WWW.JAQUITH.COM



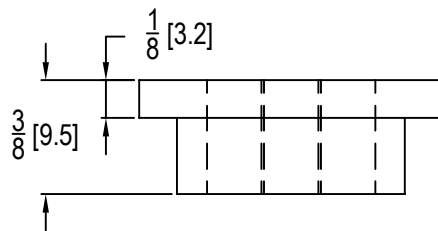
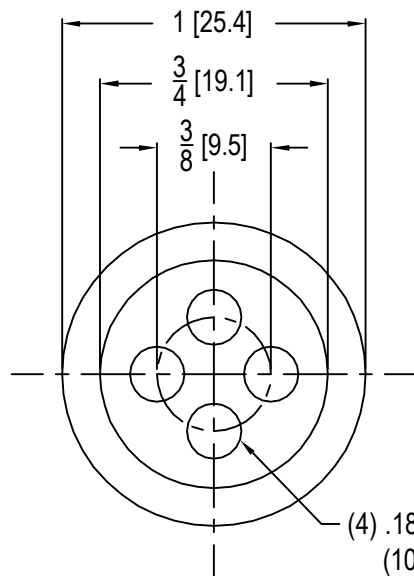
AW0921



**AW0922**

(OLD p/n: A0922)

Mat'l.: NEOPRENE



**AW0921**

(OLD p/n: A0921)

Mat'l.: NEOPRENE

[ ] = dimensions in metrics; mm

# BOLT SET W/ LOCK WASHERS (STAINLESS)



TYPICAL BOLT SET WITH LOCKWASHERS

1. Bolt sets comply with the requirements of FAA Advisory Circular 150/5345-42 (Current Revision)
2. All bolts are fully threaded 3/8-16 Hex Head Cap Screws.
3. Lockwashers are 2-piece "wedge-locking" style glued together in pairs for ease of installation. To order separately use Jaquith Part Number 1068-0607.
4. Material for the bolts is grade 304 Stainless Steel
5. Material for the lockwashers is grade 316 Stainless Steel
6. Bolt sets come packed (6) in a plastic envelope with an installation instruction sheet enclosed.
7. If grade 304 Stainless Steel Hex Nuts are required order separately as Jaquith Part Number 1068-0719.

BOLT SET PART NUMBERS	
JAQUITH PART NUMBER	BOLT LENGTH
6100	1" [25.4]
6101	1 1/4" [31.7]
6102	1 1/2" [38.1]
6103	1 3/4" [44.4]
6104	2" [50.8]
6105	2 1/4" [57.1]
6106	2 1/2" [63.5]
6107	2 3/4" [69.8]
6108	3" [76.2]
6109	3 1/2" [88.9]
6111	4" [101.6]
6110	5" [127.0]
6130	6" [152.4]

[ ] = dimensions in metrics; mm

# BOLT SET (STAINLESS STEEL)



TYPICAL BOLT SET

1. Bolt sets comply with the requirements of FAA Advisory Circular 150/5345-42 (Current Revision)
2. All bolts are fully threaded 3/8-16 Hex Head Cap Screws.
3. Material for the bolts is grade 304 Stainless Steel
4. Bolt sets come packed (6) per plastic envelope.

BOLT SET PART NUMBERS	
JAQUITH PART NUMBER	BOLT LENGTH
6599	1/2" [12.7]
6600	1" [25.4]
6601	1 1/4" [31.7]
6602	1 1/2" [38.1]
6603	1 3/4" [44.4]
6604	2" [50.8]
6605	2 1/4" [57.1]
6606	2 1/2" [63.5]
6607	2 3/4" [69.8]
6608	3" [76.2]
6609	3 1/2" [88.9]
6610	4" [101.6]
6611	5" [127.0]

[ ] = dimensions in metrics; mm

# COATED BOLT SET W/LOCK WASHERS



## G.B.A. BOLT SET WITH LOCKWASHERS

1. Bolt sets comply with the requirements of FAA Advisory Circular 150/5345-42 (Current Revision)
2. All bolts are fully threaded 3/8-16 Hex Head Cap Screws. (See Note #7)
3. Lockwashers are 2-piece "wedge-locking" style glued together in pairs for ease of installation.
4. Material for the bolts is grade 5 Carbon Steel Polytetrafluoroethylene (PTFE) coated.
5. Material for the lockwashers is grade 316 Stainless Steel
6. Bolt sets come packed (6) in a plastic envelope with an installation instruction sheet enclosed.
7. At a lengths of 1½" and greater, bolts have a ¼" dog point which reduces overall thread length. E.g. 6102CO Bolt Set has 1½" bolts with 1¼" available for thread engagement, while 6100CO Bolt Set has 1" of thread on the bolts.

BOLT SET PART NUMBERS	
JAQUITH PART NUMBER	AVAILABLE BOLT LENGTHS
6100CO	1" [25.4]
6102CO	1 1/2" [38.1]
6104CO	2" [50.8]
6106CO	2 1/2" [63.5]
6108CO	3" [76.2]
6109CO	3 1/2" [88.9]
6111CO	4" [101.6]
6110CO	5" [127.0]
6130CO	6" [152.4]

[ ] = dimensions in metrics; mm

**J-08h (rev 2)**





**G.B.A. BOLT SET**

1. Bolt sets comply with the requirements of FAA Advisory Circular 150/5345-42 (Current Revision)
2. All bolts are fully threaded 3/8-16 Hex Head Cap Screws.  
(See Note #5)
3. Material for the bolts is grade 5 Carbon Steel Polytetrafluoroethylene (PTFE) coated.
4. Bolt sets come packed (6) in a plastic envelope with an installation instruction sheet enclosed.
5. At lengths of 1½" and greater, bolts have a ¼" long dog point which reduces overall thread length. E.g. 6602CO Bolt Set has 1½" long bolts with 1¼" available for thread engagement, while 6600CO Bolt Set has 1" of thread on the bolts.

BOLT SET PART NUMBERS	
JAQUITH PART NUMBER	AVAILABLE BOLT LENGTHS
6600CO	1" [25.4]
6602CO	1 1/2" [38.1]
6604CO	2" [50.8]
6606CO	2 1/2" [63.5]
6608CO	3" [76.2]
6609CO	3 1/2" [88.9]
6610CO	4" [101.6]
6611CO	5" [127.0]
6630CO	6" [152.4]

[ ] = dimensions in metrics; mm