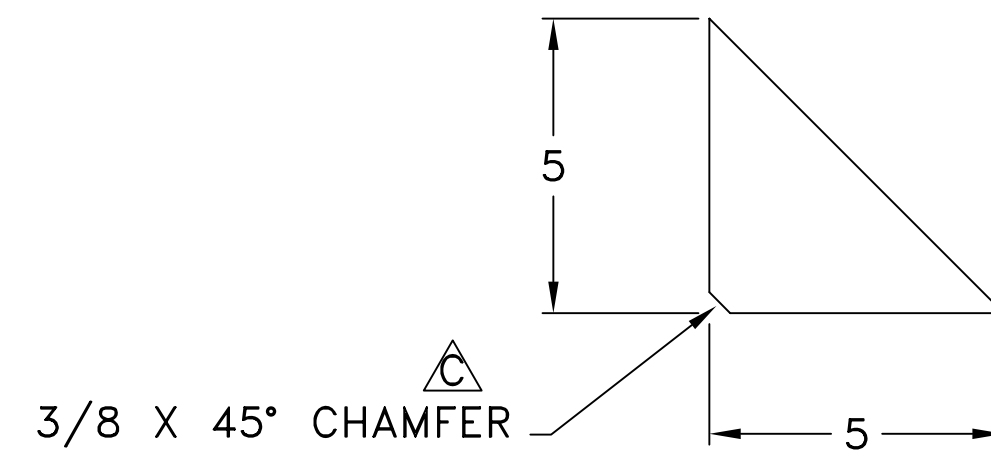
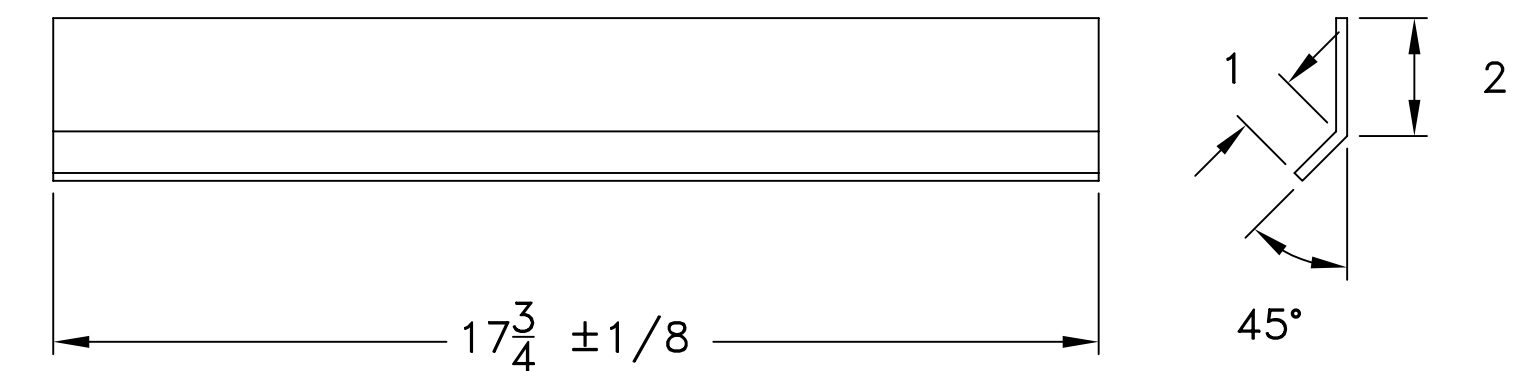


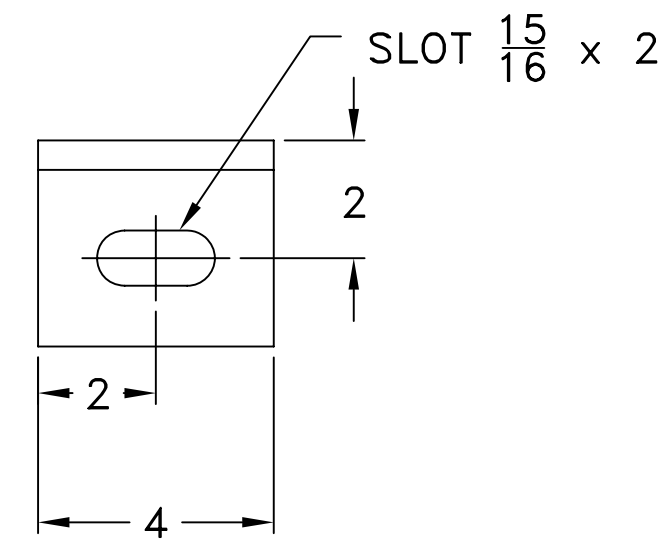
1
D-6155-42 L3 1/2 x 3 1/2 x 1/2 (ASTM A-36)
1 REQUIRED



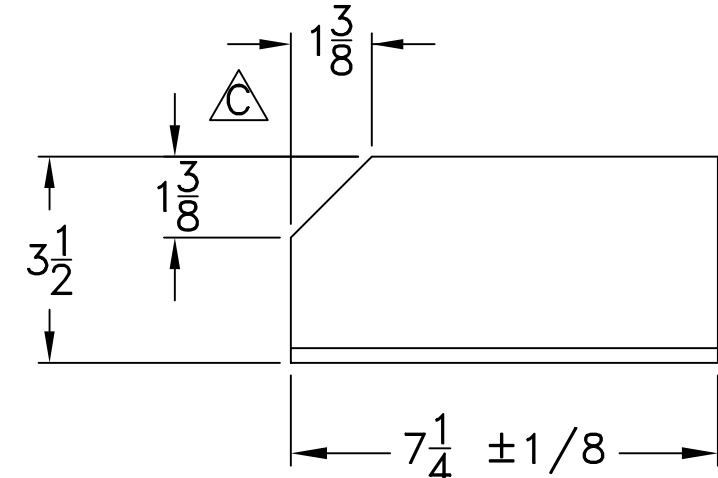
7
D-6155-42 GUSSET 1/4" PLT (ASTM A-36)
2 REQUIRED



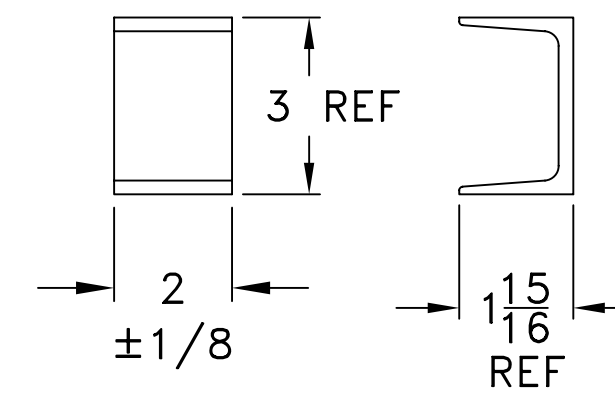
12
D-6155-42 STRIP 3/16 x 3 (304 SS)
2 REQUIRED



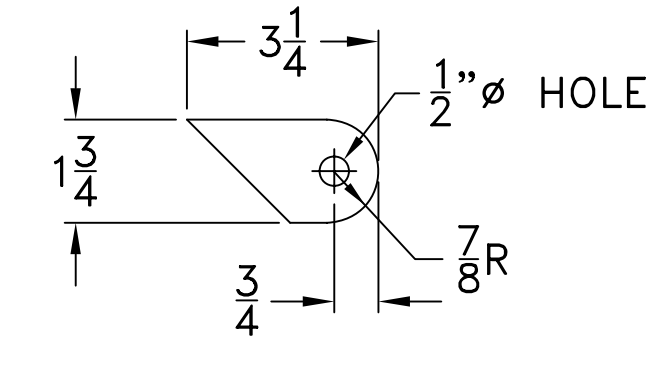
2
D-6155-42 L3 1/2 x 3 1/2 x 1/2 (ASTM A-36)
1 REQUIRED



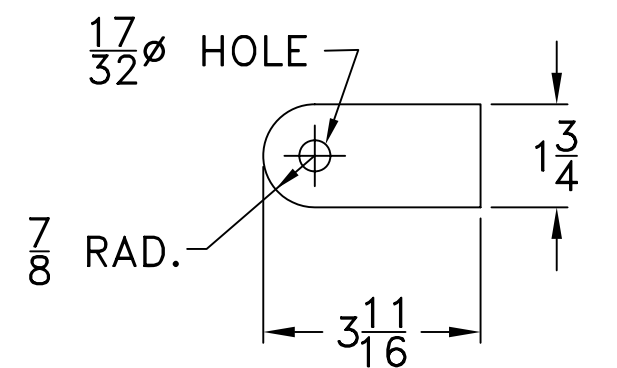
4
D-6155-42 L3 1/2 x 2 1/2 x 1/4 (ASTM A-36)
1 REQUIRED



CHANNEL MC 3 @ 7.1 x 4 1/2 (ASTM A-36)
3 REQUIRED



BRACKET
1/4" PLT (ASTM A-36)
1 REQUIRED

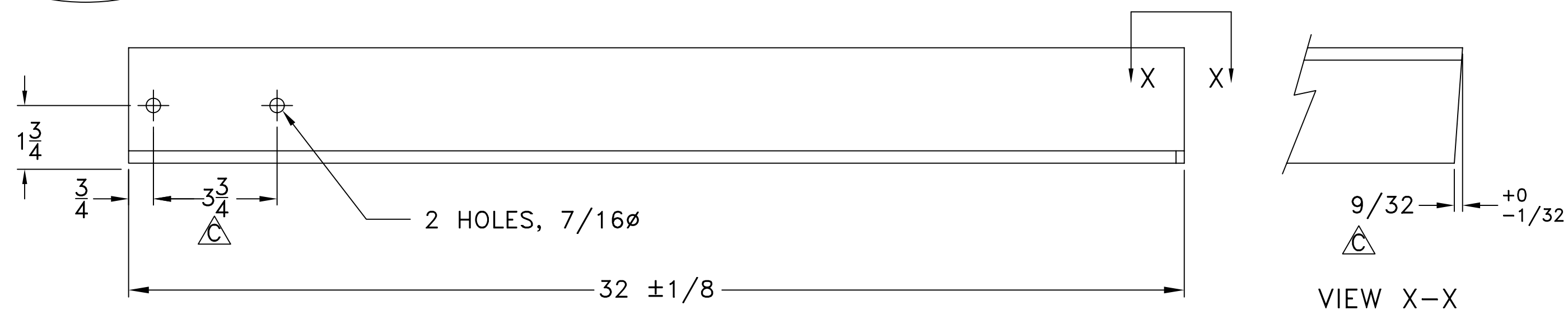


BRACKET
3/16" PLT (ASTM A-36)
2 REQUIRED

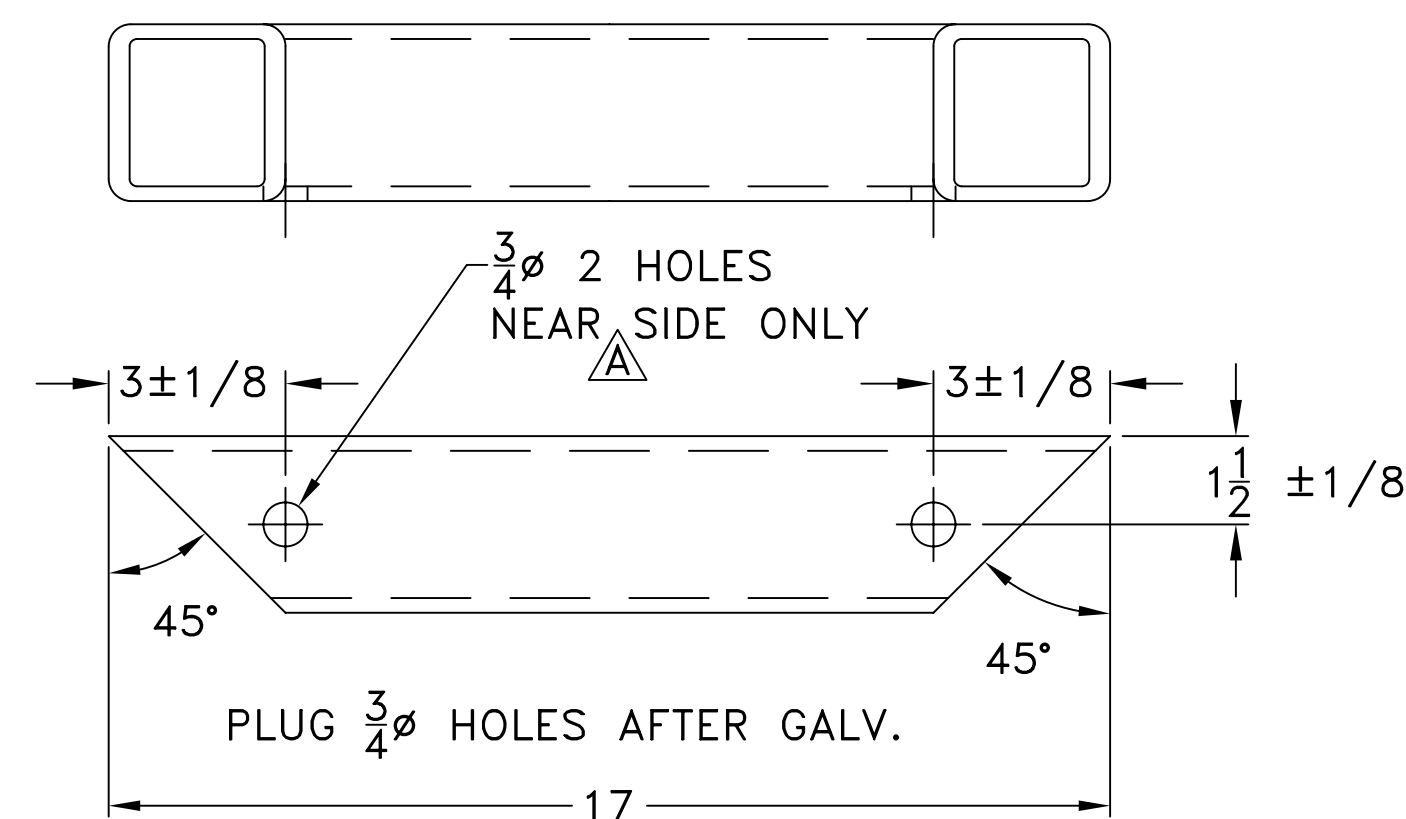
8
D-6155-42

10
D-6155-42

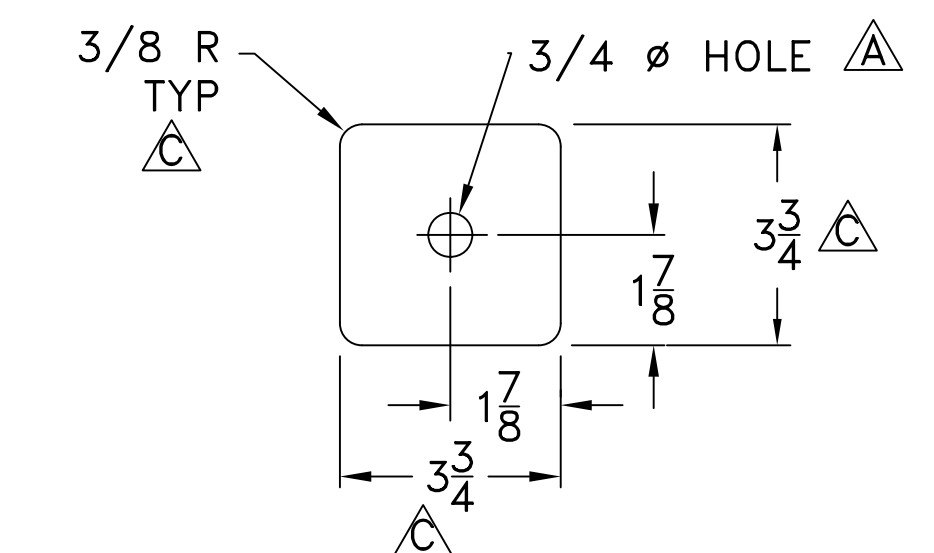
11
D-6155-42



3
D-6155-42 L3 1/2 x 3 1/2 x 3/8 (ASTM A-36)
1 REQUIRED

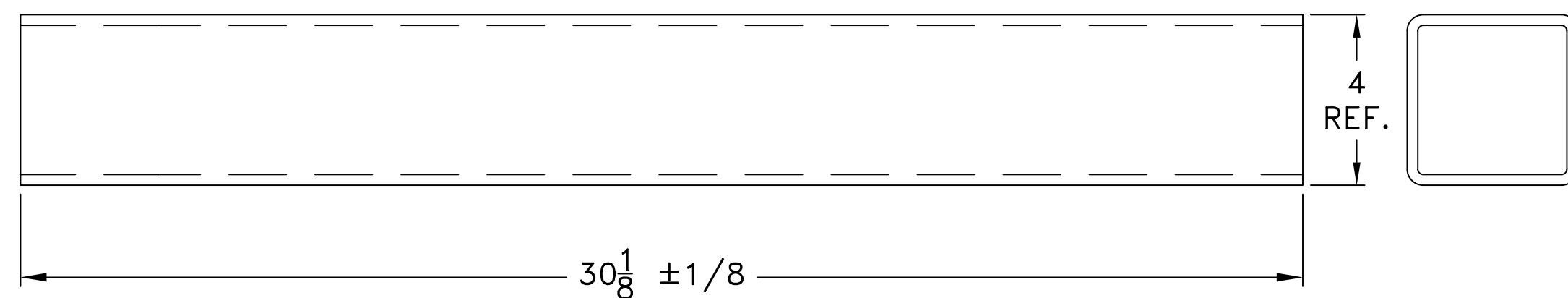


SQUARE TUBE 3 x 3 x 1/4 (ASTM A-500 GR.B.)
2 REQUIRED



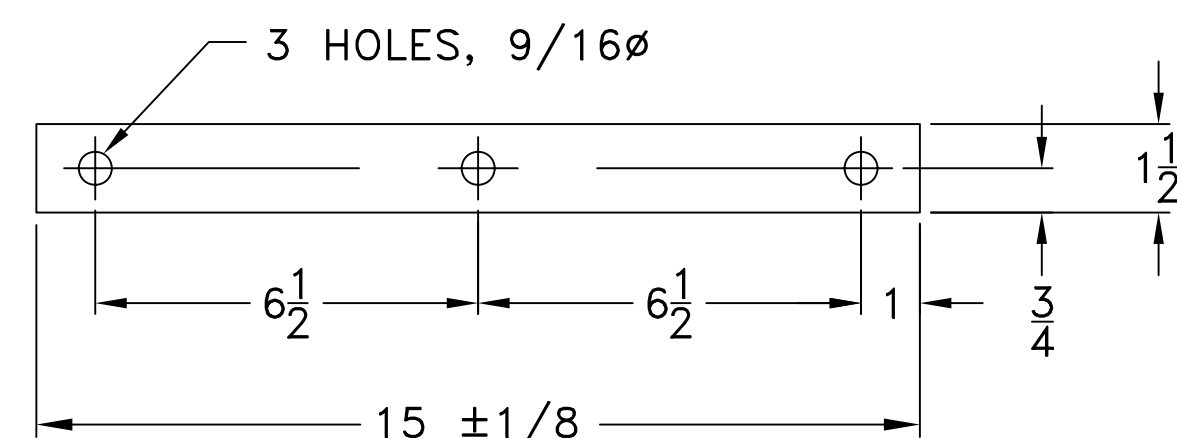
CAP PLT. 1/8" THK. (ASTM A-36)
2 REQUIRED

9
D-6155-42



5
D-6155-42 SQUARE TUBE 4 x 4 x 1/4 (ASTM A-500 GR. B.)
1 REQUIRED

6
D-6155-42



REINFORCING STRIP, 1/8 THK. TYPE 304SS
2 REQUIRED

29
D-6155-42

JACQUITH
INDUSTRIES INC
PO BOX 780
600 E. BRIGHTON AVE.
SYRACUSE, NEW YORK 13205
www.jaquith.com 315-478-5700

C	4/24/04	ITEM 29 WAS 11 GA. THK - ITEM 9 WAS 3 7/8 SQ & ADDED RAD TO CORNERS - GEN. CORRECTIONS	R.D.P.
B	9/6/01	REDRAWN IN AUTOCAD 2000 FORMAT	R.D.P.
A	10/27/80	3/4" Ø HOLE WAS 3/8"	
REV.LTR.	DATE	DESCRIPTION	CHECKED APPROVED

DEPARTMENT OF TRANSPORTATION
FEDERAL AVIATION ADMINISTRATION
WASHINGTON, D.C. 20591
ALSF-2 (6' - 128') & MALSR (40' - 128')
L.I.R. STRUCTURES
LIGHT MOUNTING HEIGHT 40'-1" TO 128'
MAST LIFTING FRAME DETAILS

REVIEWED BY	SUBMITTED BY	APPROVED BY
DESIGNED BY	ISSUED BY	DATE-
DRAWN BY WLJ		
CHECKED BY		REV. LTR.
		D-6155-43
		C